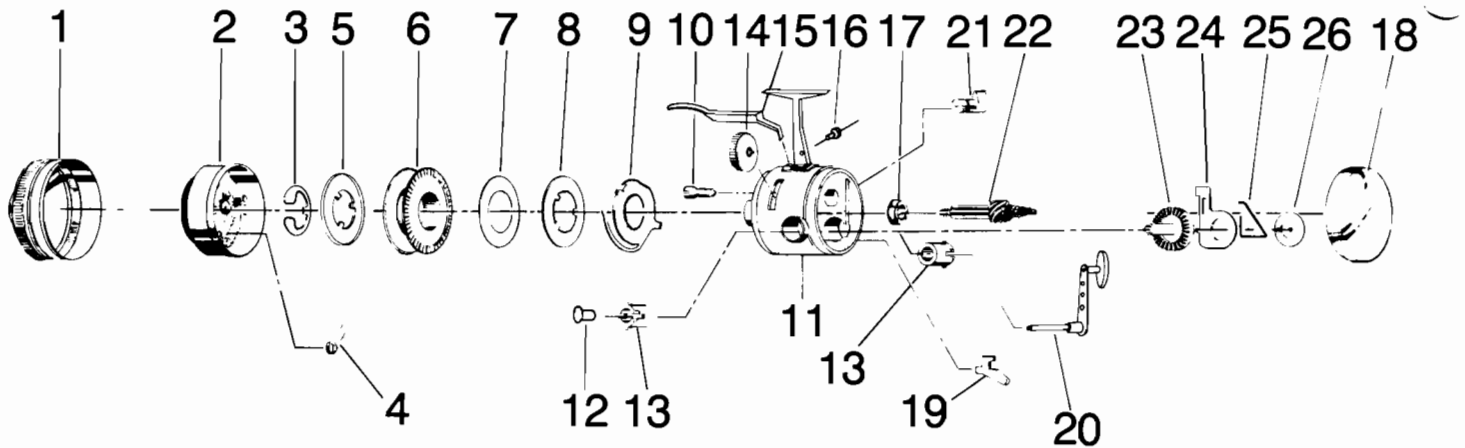


ZEBCO UL4 CLASSIC



KEY PART

NO. NO.	DESCRIPTION
1 BE324-1	FRONT COVER
2 BE310	SPINNERHEAD S/A
3 XZ034	SPOOL CLIP
4 AJ049	PICK UP PIN SPRING
5 BE036	LIP
6 BE021	SPOOL
6 BE321-4H	WOUND SPOOL 4# MOND HI PF
7 BJ108	FLAT WASHER
8 BJ040	SPOOL WASHER
9 BJ027	CLUTCH RING
10 BJ054	CLUTCH SCREW
11 BJ301-4	UL4 BODY S/A
12 BJ068	CRANK ROD NUT

KEY PART

NO. NO.	DESCRIPTION
13 BJ026	CRANK BEARING
14 BJ032	CLUTCH WHEEL
15 BJ050-2	FINGER BRAKE
16 BJ126-2	FINGER BRAKE SCREW
17 BJ017	BALL BEARING
18 BJ023-10	BACK COVER
19 BJ060	ANTI-REV PAWL
20 BJ318-5	HANDLE ASSY
21 BE002	ANTI-REVERSE ACTUATOR
22 BE315	CENTERSHAFT S/A
23 BJ012	CRANK BEAR
24 BJ014	ANTI-REVERSE DRAG
25 BE061	ANTI-REVERSE PAWL SPRING
26 BJ106	FLAT WASHER

Should clutch ring (9) drop out while changing spool, be sure to put largest flange in head of clutch screw (10) to reassemble.

WWW.REELDR.COM

Prices subject to change without notice. Prices do not include postage and handling.

PLEASE ORDER BY PART NUMBER

Rev. 9/88

Zebco Division Brunswick Corporation, Box 270, Tulsa, OK 74101 USA 918-836-5581

