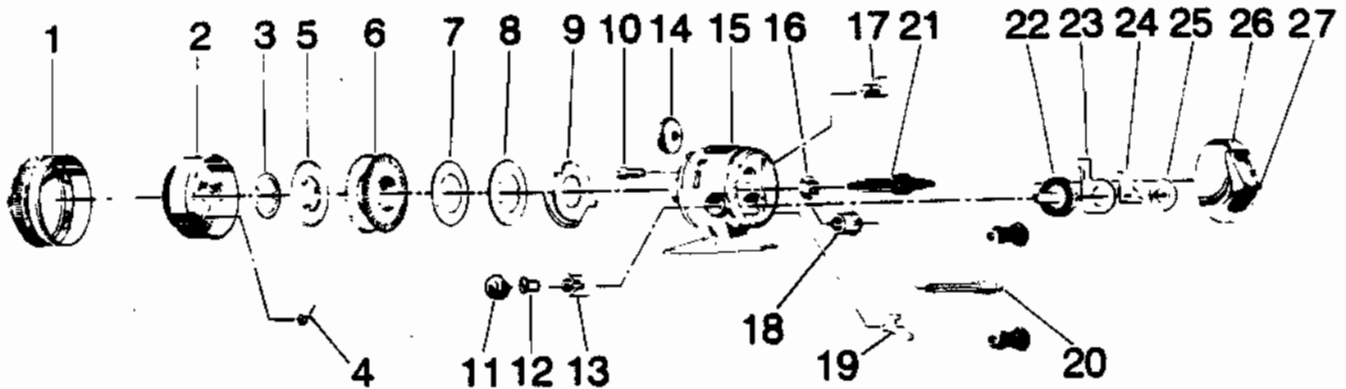


# ZEBCO UL3 CLASSIC



KEY PART NO. NO.	DESCRIPTION
1 BE324-1	FRONT COVER
2 BE310	SPINNERHEAD S/A
3 XT034	SPOOL CLIP
4 AJO49	PICK UP PIN SPRING
5 BE036	LIP
6 BE021	SPOOL
6 BE321-4R	WOUND SPOOL 48 MONO HI PF
7 BJ108	FLAT WASHER
8 BJ040	SPOOL WASHER
9 BJ027	CLUTCH RING
10 BJ054-2	CLUTCH SCREW
11 BE074	CLOSURE CAP
12 BJ069	CRANK ROD NUT
13 BJ026	CRANK BEARING
14 BJ032	CLUTCH WHEEL
15 BE301-1	BODY W/ (10,14-17)
16 BJ017	BALL BEARING
17 BE002	ANTI-REVERSE ACTUATOR
18 BJ026	CRANK BEARING
19 BJ060	ANTI-REV PAWL
20 BE318-1	CRANK HANDLE S/A
21 BE315	CENTERSHAFT S/A
22 BJ012	CRANK GEAR
23 BJ014	ANTI-REVERSE DRAG
24 BE061	ANTI-REVERSE PAWL SPRING
25 BJ106	FLAT WASHER
26 BE323-1	BACK COVER
27 BE009	THUMBSTOP-

Should clutch ring (9) drop out while changing spool, be sure to put largest flange in head of clutch screw (10) to reassemble.

[WWW.REELDR.COM](http://WWW.REELDR.COM)

Prices subject to change without notice. Prices do not include postage and handling.

**PLEASE ORDER BY PART NUMBER**

Rev. 11/90

Zebco Division Brunswick Corporation, Box 270, Tulsa, OK 74101 USA 918-636-6681

