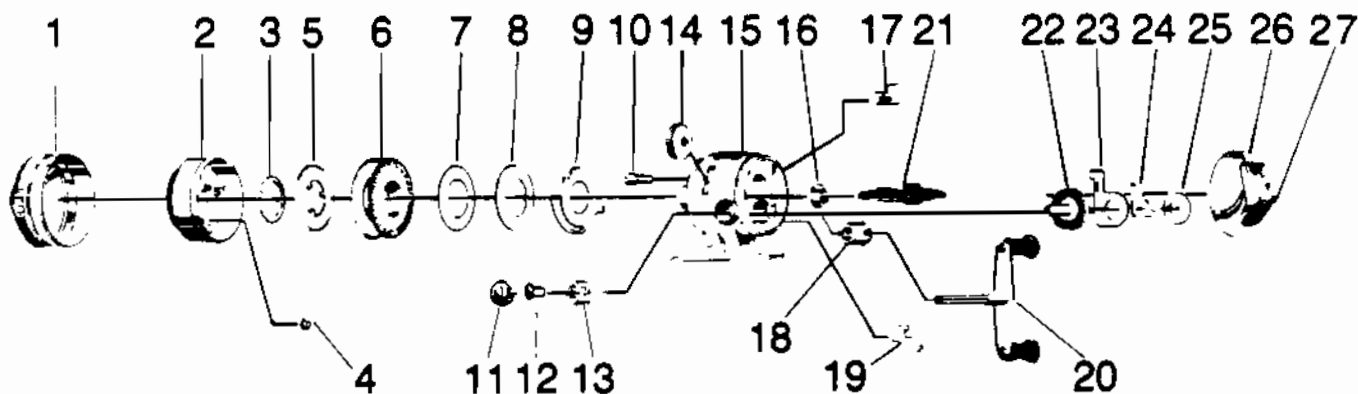


ZEBCO® UL3



Key No.	Part No.	Description
1	BE324-1	FRONT COVER
2	BE310	SPINNERHEAD S/A
3	XZ034	SPOOL CLIP
4	AJ049	PICK UP PIN SPRING
5	BE036	LIP
6	BE021	SPOOL
6	BE321-4H	WOUND SPOOL 4# MONO HI PF
7	BJ108	FLAT WASHER
8	BJ040	SPOOL WASHER
9	BJ027	CLUTCH RING
10	BJ054-2	CLUTCH SCREW
11	BE074	CLOSURE CAP
12	BJ069	CRANK ROD NUT
13	BJ026	CRANK BEARING
14	BJ032	CLUTCH WHEEL
15	BE301-1	BODY W/ (10,14-17)
16	BJ017	BALL BEARING
17	BE002	ANTI-REVERSE ACTUATOR
18	BJ026	CRANK BEARING
19	BJ060	ANTI-REV PAWL
20	BE318-1	CRANK HANDLE S/A
21	BE315	CENTERSHAFT S/A
22	BJ012	CRANK GEAR
23	BJ014	ANTI-REVERSE DRAG
24	BE061	ANTI-REVERSE PAWL SPRING
25	BJ106	FLAT WASHER

Key No.	Part No.	Description
26	BE323-1	BACK COVER
27	BE009	THUMBSTOP

WWW.REELDR.COM

Prices subject to change without notice. Prices do not include postage and handling.

PLEASE ORDER BY PART NUMBER

Rev. 5/93

Zebco Division Brunswick Corporation, Box 270, Tulsa, OK 74101 USA 918-836-5581

