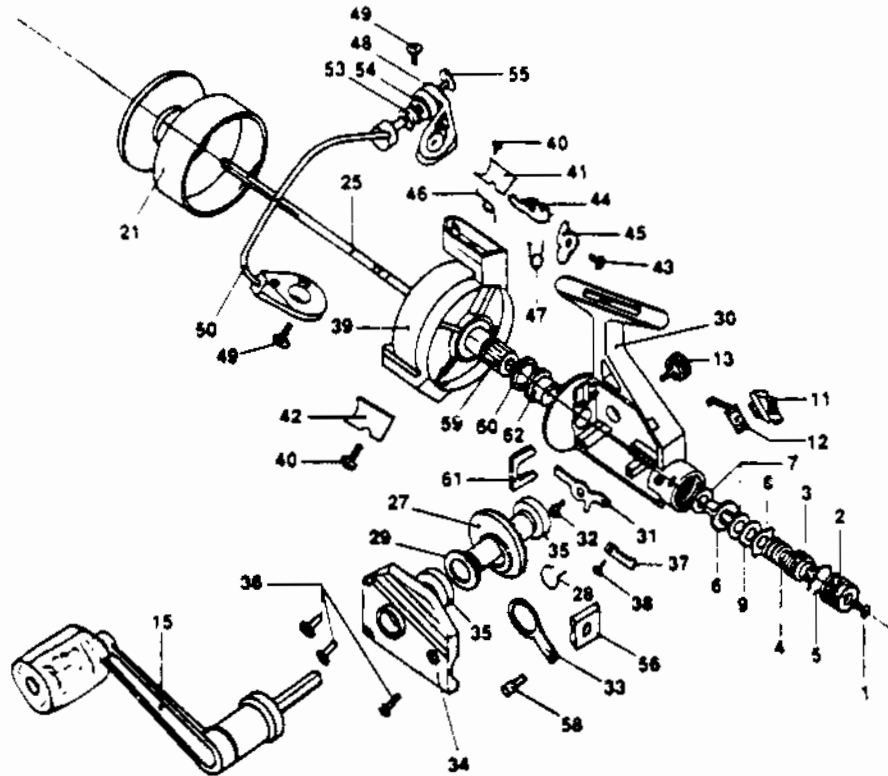


# ZEBCO® RX20



Key No.	Part No.	Description
1	JK079	DRAG SCREW
2	JK032-1	DRAG NUT
3	JK127-1	PRESSURE SLEEVE
4	JK128	PRESSURE SPRING
5	JK070-1	SAFETY RING
6	JK104	DRAG WHEEL
7	JK030	BRAKE DISC A
8	JK039	NOTCHED DISC B
9	JK046	BRAKE DISC C
10	JK129	LOCK WASHER
11	JK059	ANTI-REVERSE LEVER
12	JK090-1	ANTI-REVERSE SPRING
13	JK073	HANDLE SCREW CAP
15	JK318-1	HANDLE
21	JK321-1	SPOOL
25	JK315-1	MAIN SHAFT ASSY.
27	JK012-1	DRIVE GEAR
28	JK213	DRIVE GEAR SPRING
29	JK026	DRIVE GEAR WASHER
30	JK301-1	BODY
31	JK063	ANTI-REVERSE PAWL
32	JK089	A/R PAWL SCREW
33	JK025-1	OSCILLATOR GUIDE
34	JK323-1	SIDE PLATE
35	JK013	SIDE PLATE BUSHING
36	JK057	SIDE PLATE SCREW

WWW.REELDR.COM

Key No.	Part No.	Description
37	JK068	CLICK CLAW
38	JK067	CLICK CLAW SPRING
39	JK009-1	ROTOR
40	JK085	ROTOR COVER SCREW
41	JK087-1	ROTOR COVER (L)
42	JK024-1	ROTOR COVER (S)
43	JK037	STOP LEVER SCREW
44	JK019	STOP LEVER (L)
45	JK018	STOP LEVER (S)
46	JK049	TURNING SPRING
47	JK047-1	STOP LEVER SPRING
48	JK007-1	ANGLE LEVER
49	JK051	ANGLE LEVER SCREW
50	JK347-1	BAIL ASSY.
53	JK004	LINE ROLLER
54	JK016	LINE ROLLER WASHER
55	JK108	LINE ROLLER SCREW
56	JK081	SLIDE
58	JK084	SLIDE SCREW
59	JK011-1	PINION GEAR
60	JK010	PINION GEAR WASHER
61	JK125-1	ROTOR HOLDING PLATE
62	JK126	PINION GEAR BUSHING

Prices subject to change without notice. Prices do not include postage and handling.

**PLEASE ORDER BY PART NUMBER**

Rev. 5/93

Zebco Division Brunswick Corporation, Box 270, Tulsa, OK 74101 USA 918-836-5581

