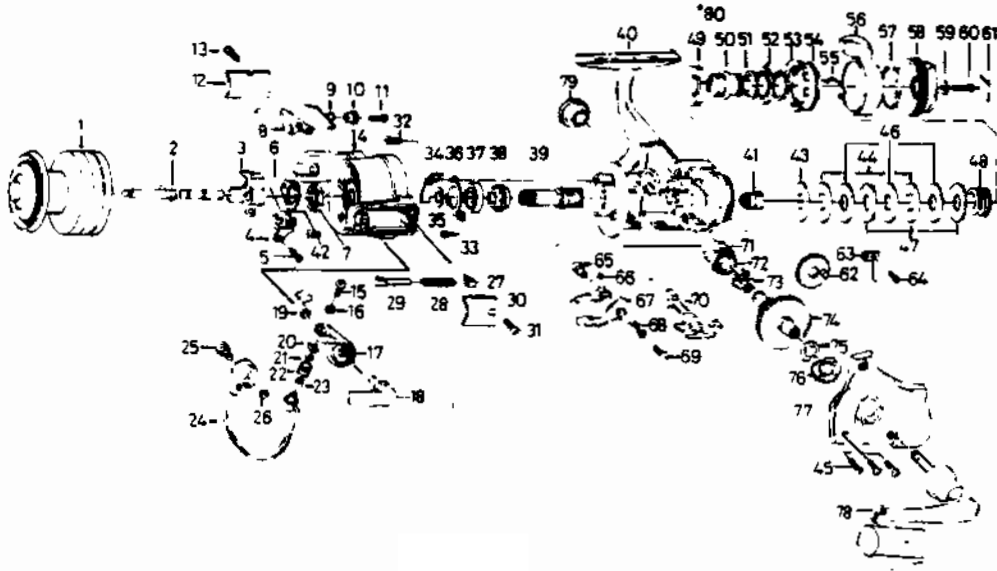


# QUANTUM X5

Reel Not Centering  
means dog not in notch on Drive gear



KEY PART NO.	DESCRIPTION
1 DK321-1	SPOOL ASSY. (EXTRA)
2 NT315	SPOOL ASSY. (MAIN)
3 NB025	MAIN SHAFT
4 NT083	OSCILLATOR SLIDER
5 NT161	OSC. SLIDER RETAINER
6 NT088	OSC. SLIDER SCREW
7 NT006	ROTOR NUT LOCK WASHER
8 PT019	ROTOR NUT
9 NTO49	BAIL TRIP LEVER
10 NT137	BAIL TRIP LEVER SPRING
11 NT037	BAIL TRIP LV. BUSHING
12 NTO24	BAIL TRIP LEVER SCREW
13 NTO85	BAIL TRIP COVER
14 DK009	BAIL SPG COVER SCRW
15 NT108	ROTOR
16 MT102	BAIL SCREW
17 NT007	LOCK WASHER
18 NT115	BAIL ARM
19 MT002	CAM CAST LEVER
20 MT017	CAM CAST LV. RETAINER
21 MT015	LINE ROLLER COLLAR
22 MT004	LINE ROLLER
23 MT016	LINE ROLLER BUSHING
24 FT347	BAIL
25 NTO44	BAIL HOLDER PIN
26 MT003	BAIL TRIP CAM RET.
27 NT020	BAIL SPG SHAFT HLDN
28 NTO22	BAIL SPRING
29 NTO29	BAIL SPRING SHAFT
30 NT087	BAIL SPRING COVER
31 NT085	BAIL SPG COVER SCRW
32 NT080	BEARING RET. SCREW A
33 NT093	BEARING RET. SCREW B
34 NTO82	BAIL TRIP PLATE
35 NTO27	PINION WASHER
36 NTO40	BEARING RETAINER
37 NTO28	BALL BEARING
38 NTO60	ANTI-REV. RATCHET
39 NT011	PINION GEAR
40 DK301	BODY
41 NTO66	CLICK GEAR

KEY PART NO.	DESCRIPTION
42 NT058	RTR NUT LOCK SCREW
43 NT039	DRAG WASHER B
44 NTO41	EARED WASHER
45 NT057	SIDE COVER SCREW
46 NTO46	DRAG WASHER C
47 NT030	KEY WASHER
48 NT031	DRAG COIL SPRING
49 NT112	DRAG NUT A
50 NT121	DRAG SCREW
51 NT106	DRAG SCREW WASHER A
52 NT110	DRAG HOLDER
53 NT111	DRAG SCREW WASHER B
54 NT117	DRAG NUT B
55 NT118	DRAG SPRING
56 CK094	POWER LEVER
57 NTO95	POWER LEVER RETAINER
58 NTO32	DRAG NNOB
59 NT119	DRAG KNOB WASHER
60 NTO79	DRAG KNOB SCREW
61 NT120	DRAG KNOB NAME PLATE
62 NTO53	OSCILLATING GEAR
63 NT068	CLICK LEAF SPRING
64 NTO67	CLICK LEAF SPRING SCRW
65 NTO14	ANTI-REV PAWL COLLAR
66 NTO63	ANTI-REV. PAWL A
67 NTO64	ANTI-REV. PAWL B
68 NTO61	ANTI-REV PAWL SPG A
69 NTO89	ANTI-REV PAWL SCREW
70 NTO59	ANTI-REV. LEVER
71 NTO52	BUSHING
72 NT253	OSCILLATING PN GEAR
73 NTO86	ANTI-REV PAWL SPG B
74 CK012	DRIVE GEAR
75 NT026	DRIVE GEAR WASHER
76 NT157	BALL BEARING
77 DK323	SIDE COVER
78 DK318	HANDLE ASSY.
79 MT073	HANDLE SCREW CAP
* 80 NT121	DRAG SCREW

\*Not pictured  
Located between Keys 49 & 50

[WWW.REELDR.COM](http://WWW.REELDR.COM)

Prices subject to change without notice. Prices do not include postage and handling.

**PLEASE ORDER BY PART NUMBER**

Rev. 11/90

Zebco Division Brunswick Corporation, Box 270, Tulsa, OK 74101 USA 918-836-5581

