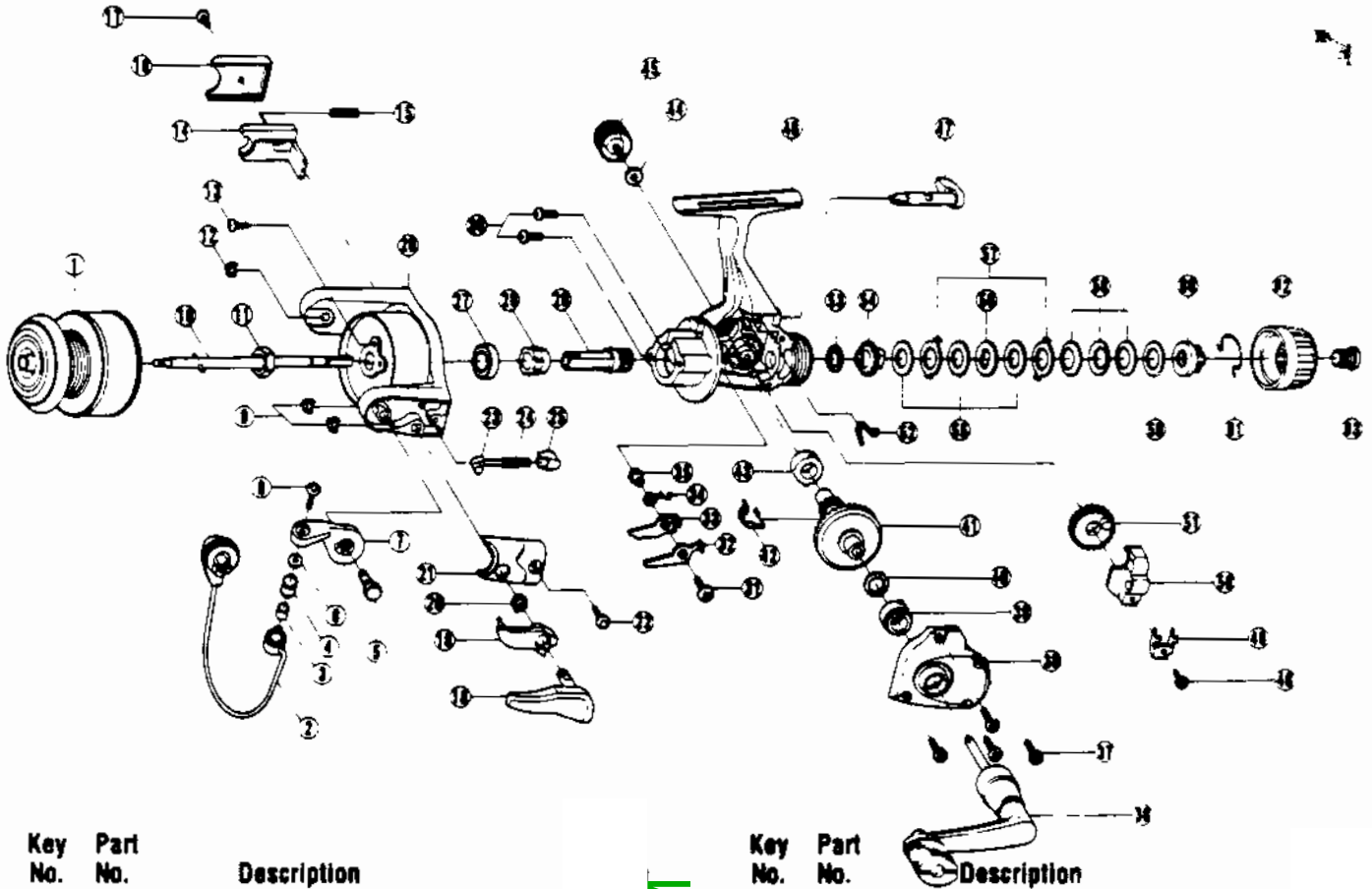


# QUANTUM SS4



Key No.	Part No.	Description
1	JU321-5	SPOOL ASSEMBLY
2	GU347-7	BAIL ASSEMBLY
3	MT016-2	LINE ROLLER BUSHING
4	MT004	LINE ROLLER
5	GU051-3	ARM LEVER PIN
6	GU105-7	WASHER-LINE ROLLER
7	JU007	ARM LEVER
8	KQ108	BAIL SCREW
9	KQ034	E-CLIP
10	JU315-3	MAIN SHAFT
11	GU006-2	ROTOR NUT
12	KQ034	E-CLIP
13	GU077-4	SCREW ROTOR NUT LOCK
14	KU019	KICK LEVER
15	KQ049	KICK LEVER SPRING
16	KU046	KICK LEVER COVER
17	GU077-2	SCREW
18	GU115-2	TRIP LEVER-ASSEMBLY
19	GU097	TRIP LINK ASSEMBLY
20	NL096	TRIP LINK SPRING
21	KU087	ARM LEVER SP/COVER
22	GU077-2	SCREW
23	QL031	SPRING SHAFT
25	QL020	SPRING HOLDER
26	KU009	ROTOR
27	AQ028-6	BALL BEARING
28	JU060	RATCHET GEAR
29	JU011	PINION GEAR
30	JU077	SCREW BEARING
31	GU077-5	SCREW-STOPPER
32	JU063	STOPPER A
33	JU074	STOPPER B

WWW.REELDR.COM

Key No.	Part No.	Description
34	JU061	STOPPER SPRING
35	GU091-2	STOPPER BUSHING
36	GU318-7	HANDLE ASSEMBLY
37	JU057	SCREW-BODY COVER
38	KU023	BODY COVER
39	JU027	BODY COVER BUSHING
40	GU105-13	D/G ADJ. WASHER
43	JU027	BODY COVER BUSHING
44	GU105	WASHER-HANDLE SCREW CAP
45	GU073	HANDLE SCREW CAP
46	KU001	BODY
47	GU090	STOPPER LEVER
48	JU100	SCREW-OSC. RETAINER
49	JU078	RETAINER-OSC. SLIDER
50	KU025	OSC. SLIDER
51	KU053	OSCILLATION GEAR
52	GU089	STOPPER LEVER SPRING
53	GU105-17	WASHER-DRAG FRICTION
54	KU075	METAL GEAR
55	GU105-18	WASHER-DRAG B
56	JU080	WASHER-DRAG D
57	JU081	WASHER-DRAG A
58	JU043	DRAG SPRING
59	GU105-19	DRAG ADJ. WASHER
60	JU066	DRAG NUT
61	JU083	DRAG CLICK CLAW
62	JU032	DRAG KNOB
63	JU101	DRAG KNOB SCREW

Prices subject to change without notice. Prices do not include postage and handling.

**PLEASE ORDER BY PART NUMBER**

Rev. 5/93

Zebco Division Brunswick Corporation, Box 270, Tulsa, OK 74101 USA 918-836-5581

