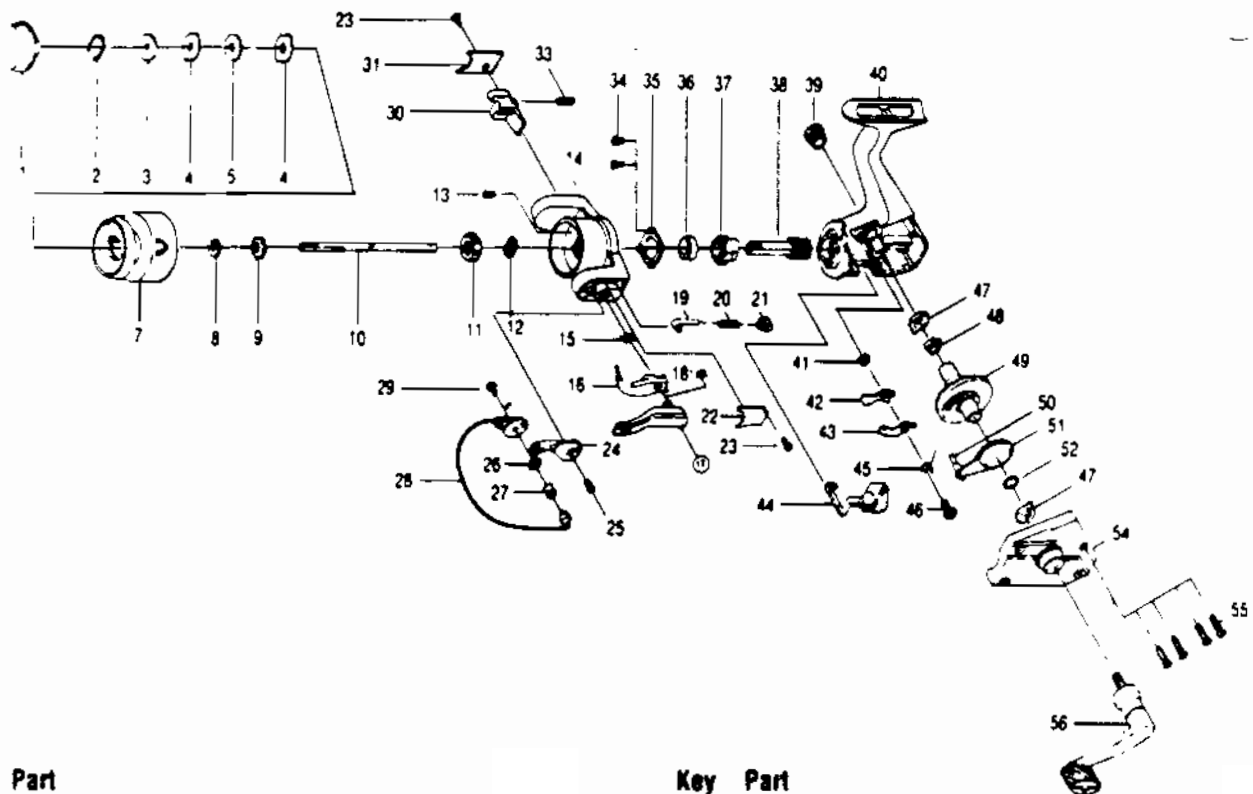


# QUANTUM SS2



Key No.	Part No.	Description
1	KQ332	DRAG KNOB ASSY.
2	KQ038	DRAG RETAINER
3	KQ033	SPOOL WASHER 'A'
4	KQ029	SPOOL WASHER 'B'
5	KQ050	SPOOL WASHER 'C'
7	KQ021	SPOOL
8	KQ030	SPOOL ADJ. WASHER
9	KQ037	SPOOL CLICK CLAW
10	KQ015	MAIN SHAFT
11	KQ006	ROTOR NUT
12	KQ065	ROTOR RETAINER WASHER
13	KQ094	ROTOR NUT LOCK SCREW
14	KQ009	ROTOR
15	KQ096	TRIP LINK SPRING
16	KQ097	TRIP LINK
17	KQ115	TRIP LEVER
18	KQ034	E-CLIP
19	KQ031	SPRING SHAFT
20	KQ022	BAIL SPRING
21	KQ020	SPRING HOLDER
22	KQ087	BAIL SPRING COVER
23	KQ085	ROTOR COVER SCREW
24	KQ007	ARM LEVER
25	KQ051	ARM LEVER SCREW
26	KQ017	BAIL COLLAR
27	KQ004	LINE ROLLER
28	KQ347	BAIL ASSY.

WWW.REELDR.COM

Key No.	Part No.	Description
29	KQ044	BAIL HOLDER SCREW
30	KQ019	KICK LEVER
31	KQ024	KICK LEVER COVER
33	KQ049	KICK LEVER SPRING
34	KQ080	BEARING PLATE SCREW
35	KQ040	BEARING PLATE
36	KQ028	BALL BEARING
37	KQ060	RATCHET GEAR
38	KQ011	PINION GEAR
39	KQ073	HANDLE SCREW CAP
40	KQ001	BODY
41	KQ091	STOPPER BUSHING
42	KQ064	STOPPER 'A'
43	KQ063	STOPPER 'B'
44	KQ059	STOPPER LEVER
45	KQ061	STOPPER LEVER SPRING
46	KQ083	STOPPER SCREW
47	KQ013	BODY/BODY COVER BUSHING
48	KQ086	SLIDING SPRING
49	KQ012	DRIVE GEAR
50	KQ081	O/S SLIDER PIN
51	KQ025	O/S SLIDER
52	KQ026	DRIVE GEAR ADJ. WASHER
54	KQ023	BODY COVER
55	KQ057	BODY COVER SCREW
56	KQ318	HANDLE ASSY.

Prices subject to change without notice. Prices do not include postage and handling.

**PLEASE ORDER BY PART NUMBER**

Rev. 5/93

Zebco Division Brunswick Corporation, Box 270, Tulsa, OK 74101 USA 918-836-5581

