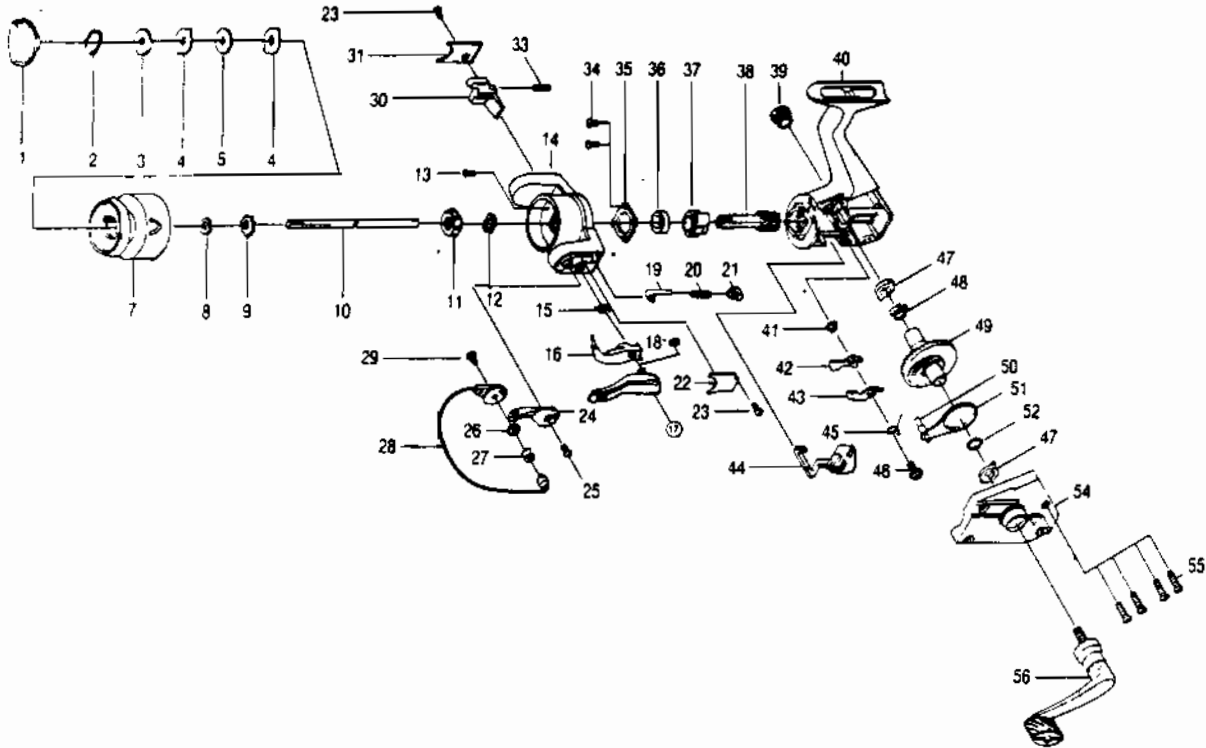


# QUANTUM SS2



## KEY PART NO. NO.

KEY PART NO. NO.	DESCRIPTION
1 KQ332	DRAG KNOB ASSY.
2 KQ038	DRAG RETAINER
3 KQ033	SPOOL WASHER 'A'
4 KQ029	SPOOL WASHER 'B'
5 KQ050	SPOOL WASHER 'C'
7 KQ021	SPOOL
8 KQ030	SPOOL ADJ. WASHER
9 KQ037	SPOOL CLICK CLAW
10 KQ015	MAIN SHAFT
11 KQ006	ROTOR NUT
12 KQ065	ROTOR RETAINER WASHER
13 KQ094	ROTOR NUT LOCK SCREW
14 KQ009	ROTOR
15 KQ096	TRIP LINK SPRING
16 KQ097	TRIP LINK
17 KQ115	TRIP LEVER
18 KQ034	E-CLIP
19 KQ031	SPRING SHAFT
20 KQ022	BAIL SPRING
21 KQ020	SPRING HOLDER
22 KQ087	BAIL SPRING COVER
23 KQ085	ROTOR COVER SCREW
24 KQ007	ARM LEVER
25 KQ051	ARM LEVER SCREW
26 KQ017	BAIL COLLAR
27 KQ004	LINE ROLLER
28 KQ347	BAIL ASSY.

## KEY PART NO. NO.

KEY PART NO. NO.	DESCRIPTION
29 KQ044	BAIL HOLDER SCREW
30 KQ019	KICK LEVER
31 KQ024	KICK LEVER COVER
33 KQ049	KICK LEVER SPRING
34 KQ080	BEARING PLATE SCREW
35 KQ040	BEARING PLATE
36 KQ028	BALL BEARING
37 KQ060	RATCHET GEAR
38 KQ011	PINION GEAR
39 KQ073	HANDLE SCREW CAP
40 KQ001	BODY
41 KQ091	STOPPER BUSHING
42 KQ064	STOPPER 'A'
43 KQ063	STOPPER 'B'
44 KQ059	STOPPER LEVER
45 KQ061	STOPPER LEVER SPRING
46 KQ083	STOPPER SCREW
47 KQ013	BODY/BODY COVER BUSHING
48 KQ086	SLIDING SPRING
49 KQ012	DRIVE GEAR
50 KQ081	O/S SLIDER PIN
51 KQ025	ROTOR COVER SCREW
52 KQ026	DRIVE GEAR ADJ. WASHER
54 KQ023	BODY COVER
55 KQ057	BODY COVER SCREW
56 KQ318	HANDLE ASSY.

[WWW.REELDR.COM](http://WWW.REELDR.COM)

Prices subject to change without notice. Prices do not include postage and handling.

**PLEASE ORDER BY PART NUMBER**

Rev. 11/90

Zebco Division Brunswick Corporation, Box 270, Tulsa, OK 74101 USA 918-636-5581

