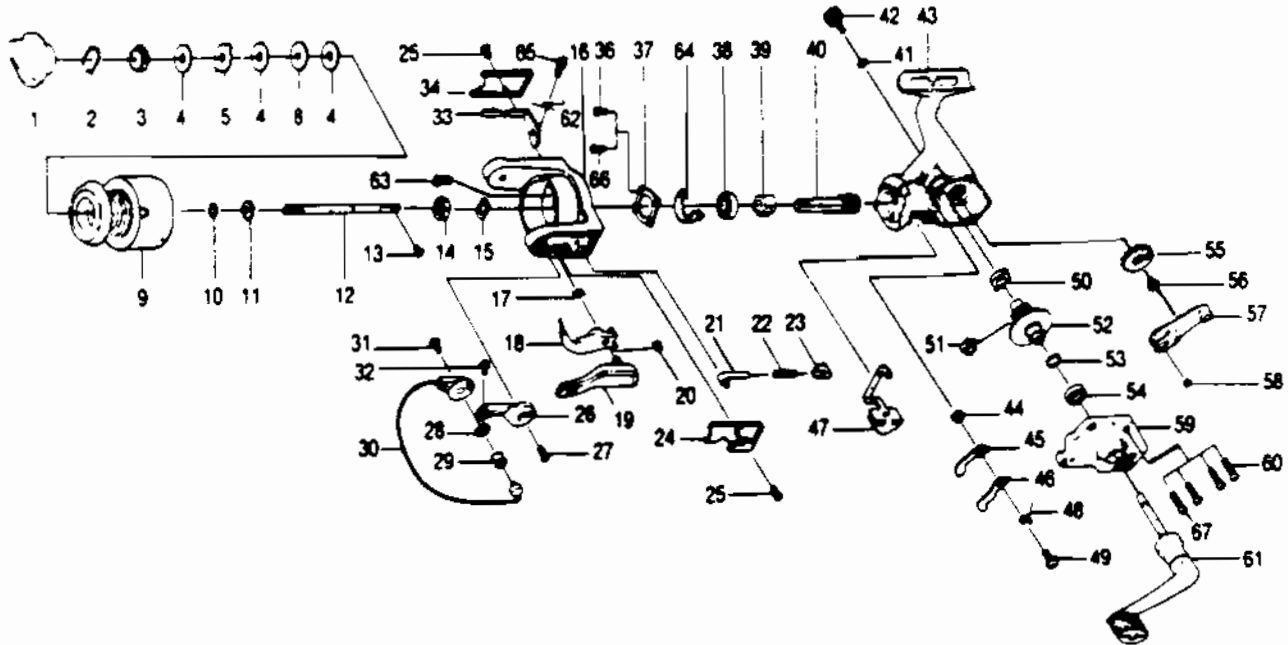


QUANTUM SLS3



Key No.	Part No.	Description
1	AQ332	DRAG KNOB ASSY.
2	AQ038	DRAG RETAINER
3	AQ050	SPOOL WASHER 'C'
4	AQ033	SPOOL WASHER 'A'
5	AQ029	SPOOL WASHER 'B'
9	BQ321-3	SPOOL
10	AQ030	SPOOL ADJ. WASHER
11	AQ037	SPOOL CLICK CLAW
12	BQ015-1	MAIN SHAFT
13	AQ100	MAIN SHAFT SCREW
14	QL006	ROTOR NUT
15	QL065	ROTOR RETAINER WASHER
16	BQ009-3	ROTOR
17	NL096	TRIP LINK SPRING
18	PL097	TRIP LINK
19	PL115	TRIP LEVER
20	NL034	E-CLIP
21	QL031	SPRING SHAFT
22	QL022	BAIL SPRING
23	QL020	SPRING HOLDER
24	BQ087-1	BAIL SPRING COVER
25	AQ085	ROTOR COVER SCREW
26	PL007	ARM LEVER
27	AQ051	ARM LEVER SCREW
28	PL017	BAIL COLLAR
29	PL004	LINE ROLLER
30	BQ347-2	BAIL ASSY
31	AQ044	BAIL HOLDER SCREW
32	SL108	BAIL SCREW
33	BQ019-1	KICK LEVER
34	BQ024-1	KICK LEVER COVER
36	AQ080	BEARING PLATE SCREW

WWW.REELDR.COM

Key No.	Part No.	Description
37	BQ040-1	BEARING PLATE
38	BQ028	B/BEARING - ROTOR
39	BQ060	RATCHET GEAR
40	BQ011-2	PINION GEAR
41	BQ105	HANDLE CAP WASHER
42	AL073-1	HANDLE SCREW
43	BQ001-3	BODY
44	NL091	STOPPER BUSHING
45	BQ064	STOPPER 'A'
46	BQ063	STOPPER 'B'
47	BQ059	STOPPER LEVER
48	BQ061	STOPPER L/R SPRING
49	AQ083	STOPPER SCREW
50	AQ013-1	BODY BUSHING
51	AQ086	SLIDING SPRING
52	BQ012-2	DRIVE GEAR
53	AQ026	DRIVE GEAR ADJ. WASHER
54	AL013	BODY BUSHING
55	BQ053-1	O/S GEAR
56	WK078	OSC. GEAR SCREW
57	BQ025	O/S PIVOT ARM
58	AQ056	O/S PIVOT ARM WASHER
59	BQ023-3	BODY COVER
60	AQ057	BODY COVER SCREW
61	AL318	HANDLE ASSY.
62	BQ049-1	KICK LEVER SPRING
63	RL094	ROTOR NUT LOCK SCREW
64	BQ082-1	KICK LEVER GUIDE
66	AQ080-1	BEARING PLATE S/C

Prices subject to change without notice. Prices do not include postage and handling.

PLEASE ORDER BY PART NUMBER

Rev. 5/93

Zebco Division Brunswick Corporation, Box 270, Tulsa, OK 74101 USA 918-836-5581

