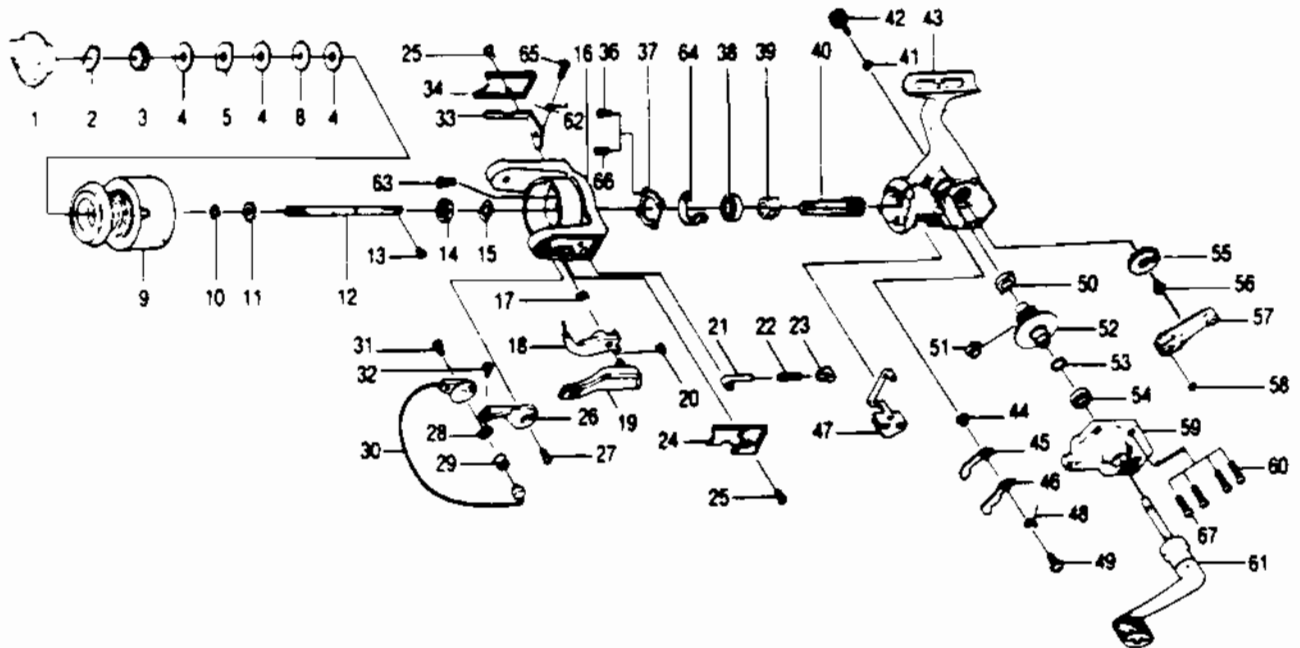


# QUANTUM SLS2



Key No.	Part No.	Description	Key No.	Part No.	Description
1	AQ332	DRAG KNOB ASSY.	37	AQ040-1	BEARING PLATE
2	AQ038	DRAG RETAINER	38	AQ028	BODY BEARING - ROTOR
3	AQ050	SPOOL WASHER 'C'	39	PL060	RATCHET GEAR
4	AQ033	SPOOL WASHER 'A'	40	EQ011-2	PINION GEAR
5	AQ029	SPOOL WASHER 'B'	41	AQ105	HANDLE CAP WASHER
9	AQ321-1	SPOOL	42	NL073	HANDLE SCREW CAP
10	AQ030	SPOOL ADJ. WASHER	43	AQ001-1	BODY
11	AQ037	SPOOL CLICK CLAW	44	NL091	STOPPER BUSHING
12	AQ015-1	MAIN SHAFT	45	NL064	STOPPER 'A'
13	AQ100	MAIN SHAFT SCREW	46	NL063	STOPPER 'B'
14	NL006	ROTOR NUT	47	AQ059	STOPPER LEVER
15	NL065	ROTOR RETAINER WASHER	48	AQ061	STOPPER L/R SPRING
16	AQ009-1	ROTOR	49	AQ083	STOPPER SCREW
17	NL096	TRIP LINK SPRING	50	AQ013-1	BODY BUSHING
18	PL097	TRIP LINK	51	AQ086	SLIDING SPRING
19	PL115	TRIP LEVER	52	EQ012-2	DRIVE GEAR
20	NL054	E-CLIP	53	AQ026	DRIVE GEAR ADJ. WASHER
21	NL031	SPRING SHAFT	54	AL013	BODY BUSHING
22	NL022	BAIL SPRING	55	AQ053	O/S GEAR
23	PL020	SPRING HOLDER	56	AQ078	O/S GEAR SCREW
24	AQ087-1	BAIL SPRING COVER	57	AQ025	O/S PIVOT ARM
25	AQ085	ROTOR COVER SCREW	58	AQ056	O/S PIVOT ARM WASHER
26	PL007	ARM LEVER	59	AQ023-1	BODY COVER
27	AQ051	ARM LEVER SCREW	60	KQ057	BODY COVER SCREW
28	PL017	BAIL COLLAR	61	NL318	HANDLE ASSY.
29	PL004	LINE ROLLER	62	AQ049-1	KICK LEVER SPRING
30	AQ347-1	BAIL ASSY	63	RL094	ROTOR NUT LOCK SCREW
31	AQ044	BAIL HOLDER SCREW	64	AQ082-1	KICK LEVER GUIDE
32	SL108	BAIL SCREW	66	AQ080-1	BEARING PLATE S/C
33	AQ019-1	KICK LEVER			
34	AQ024-1	KICK LEVER COVER			
36	AQ080	BEARING PLATE SCREW			

WWW.REELDR.COM

Prices subject to change without notice. Prices do not include postage and handling. Some parts may not be available.

**PLEASE ORDER BY PART NUMBER**

Rev. 5/93

Zebco Division Brunswick Corporation, Box 270, Tulsa, OK 74101 USA 918-836-5581

