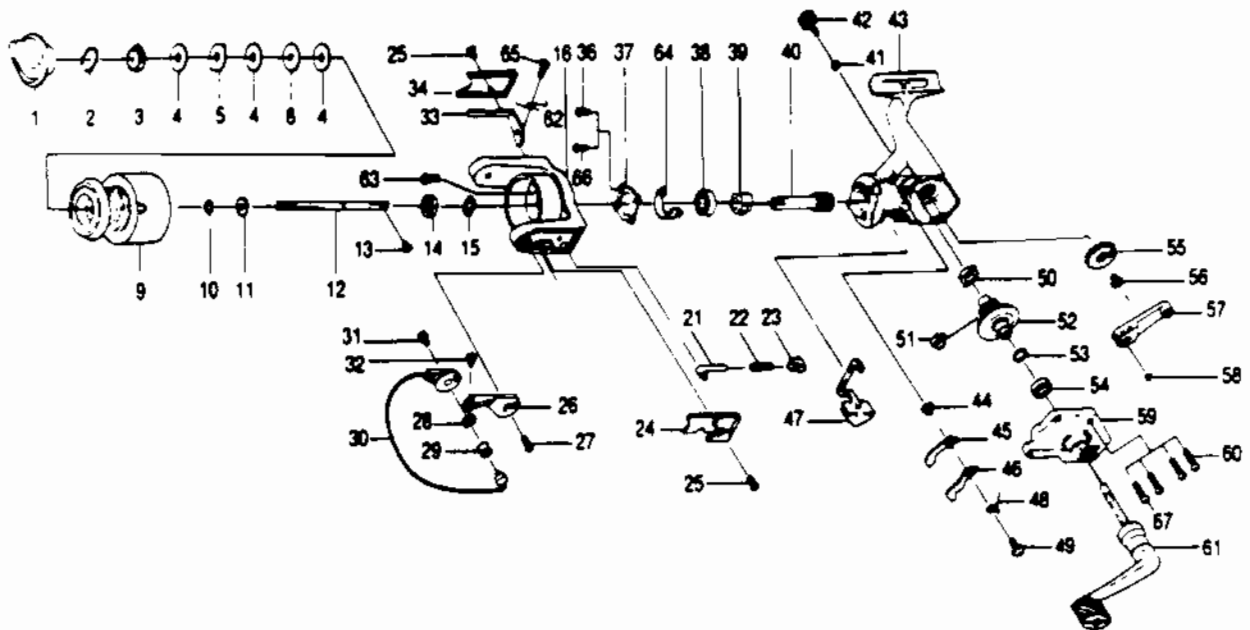


QUANTUM SLC3



Key No.	Part No.	Description	Key No.	Part No.	Description
1	AQ332	DRAG KNOB ASSY.	41	BQ105	HANDLE CAP WASHER
2	AQ038	DRAG RETAINER	42	AL073	HANDLE SCREW
3	AQ050	SPOOL WASHER 'C'	43	BQ001-4	BODY
4	AQ033	SPOOL WASHER 'A'	44	NL091	STOPPER BUSHING
5	AQ029	SPOOL WASHER 'B'	45	BQ064	STOPPER 'A'
9	BQ321-4	SPOOL ASSEMBLY	46	BQ063	STOPPER 'B'
10	AQ030	SPOOL ADJ. WASHER	47	BQ059	STOPPER LEVER
11	AQ037	SPOOL CLICK CLAW	48	BQ061	STOPPER L/R SPRING
12	BQ015-1	MAIN SHAFT	49	AQ083	STOPPER SCREW
13	AQ100	MAIN SHAFT SCREW	50	AQ013-1	BODY BUSHING
14	QL006	ROTOR NUT	51	AQ086	SLIDING SPRING
15	QL065	ROTOR RETAINER WASHER	52	BQ012-2	DRIVE GEAR
16	BQ009-3	ROTOR	53	AQ026	DRIVE GEAR ADJ. WASHER
21	QL031	SPRING SHAFT	54	AL013	BODY BUSHING
22	QL022	BAIL SPRING	55	BQ053-1	O/S GEAR
23	QL020	SPRING HOLDER	56	WK078	OSC. GEAR SCREW
24	BQ087-1	BAIL SPRING COVER	57	BQ025	O/S PIVOT ARM
25	AQ085	ROTOR COVER SCREW	58	AQ056	O/S PIVOT ARM WASHER
26	PL007	ARM LEVER	59	BQ023-4	BODY COVER
27	AQ051	ARM LEVER SCREW	60	AQ057	BODY COVER SCREW
28	PL017	BAIL COLLAR	61	AL318	HANDLE ASSY.
29	PL004	LINE ROLLER	62	BQ049-1	KICK LEVER SPRING
30	BQ347-2	BAIL ASSY	63	RL049	KICK LEVER SPRING
31	AQ044	BAIL HOLDER SCREW	64	BQ082-1	KICK LEVER GUIDE
32	SL108	BAIL SCREW	66	AQ080-1	BEARING PLATE S/C
33	BQ019-1	KICK LEVER	67	KQ057	BODY COVER SCREW
34	BQ024-1	KICK LEVER COVER			
36	AQ080	BEARING PLATE SCREW			
37	BQ040-1	BEARING PLATE			
38	BQ028	B/BEARING - ROTOR			
39	BQ060	RATCHET GEAR			
40	BQ011-2	PINION GEAR			

WWW.REELDR.COM

Prices subject to change without notice. Prices do not include postage and handling.

PLEASE ORDER BY PART NUMBER

Rev. 5/93

Zebco Division Brunswick Corporation, Box 270, Tulsa, OK 74101 USA 918-836-5581

