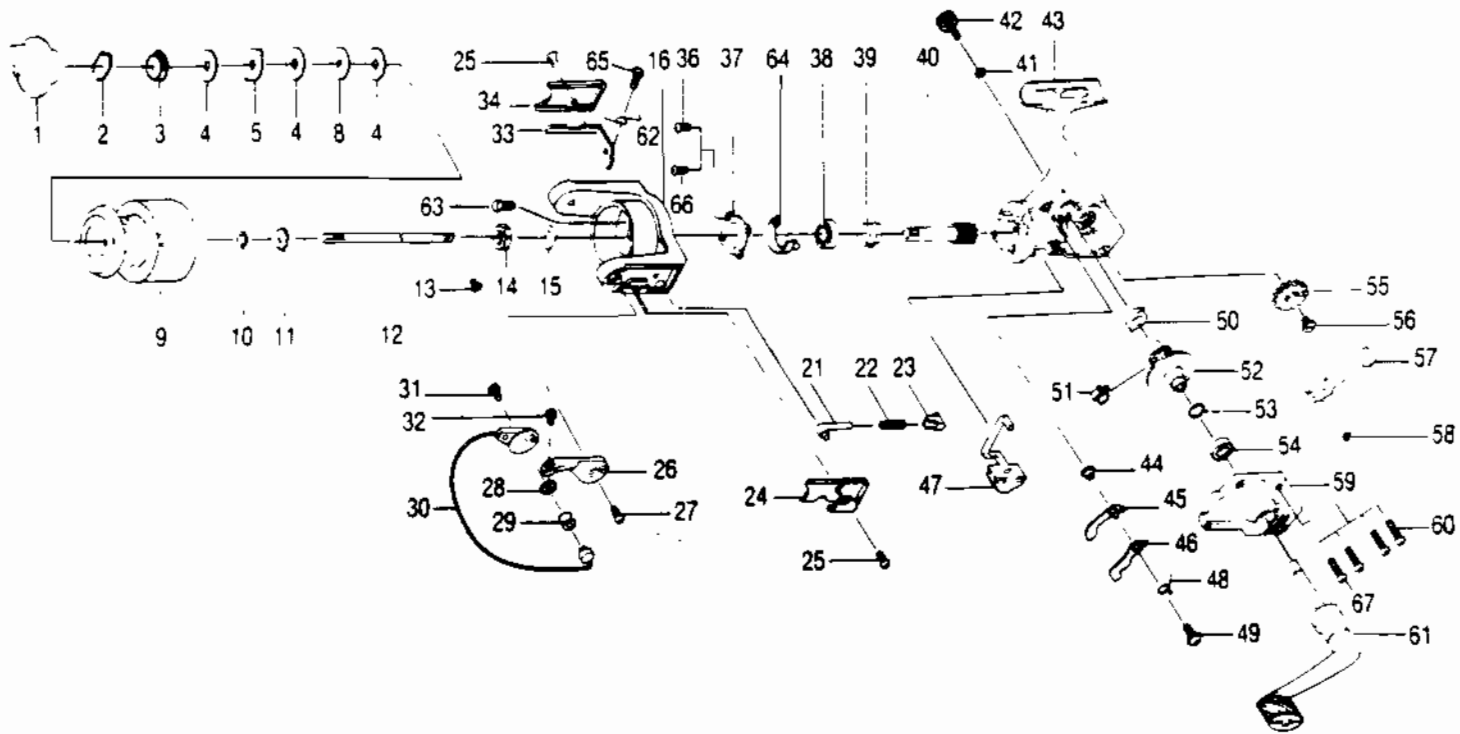


QUANTUM SLC2



WWW.REELDR.COM

KEY NO.	PART NO.	DESCRIPTION	KEY NO.	PART NO.	DESCRIPTION	KEY NO.	PART NO.	DESCRIPTION
1	AQ332	Drag Knob Assy.	27	AQ051	Arm Lever S/C	48	AQ061	Stopper L/R Spring
2	AQ038	Drag Retainer	28	PL017	Bail Collar	49	AQ083	Stopper S/C
3	AQ050	Spool Retainer	29	PL004	Line Roller	50	AQ013-1	Body Bushing
4	AQ033	Spool W/S A	30	AQ347-1	Bail Assy.	51	AQ086	Sliding Spring
5	AQ029	Spool W/S B	31	AQ044	Bail Holder S/C	52	EQ012-2	Drive Gear
8	AQ046	Spool W/S D	32	SL108	Bail S/C	53	AQ026	Drive Gear A/J W/S
9	EQ321-3	Spool Assy.	33	AQ019-1	Kick Lever	54	AL013	Body Cover Bushing
10	AQ030	Spool A/J W/S	34	AQ024-1	Kick Lever Cover	55	AQ053	O/S Gear
11	AQ037	Spool Click Gear	36	AQ080	Bearing Plate S/C	56	AQ078	O/S Gear S/C
12	AQ015-1	Main Shaft	37	AQ040-1	Bearing Plate	57	AQ025	O/S Pivot Arm
13	AQ100	Main Shaft S/C	38	AQ028	B/Bearing - Rotor	58	AQ056	O/S Pivot Arm W/S
14	NL006	Rotor Nut	39	PL060	Ratchet Gear	59	AQ023-2	Body Cover
15	NL065	Rotor Retainer W/S	40	EQ011-2	Pinion Gear	60	KQ057	Body Cover S/C
16	AQ009-2	Rotor	41	AQ105	Handle Cap W/S	61	NL318	Handle Assy.
21	NL031	Spring Shaft	42	NL073	Handle S/C Cap	62	AQ049-1	Kick Lever Spring
22	NL022	Bail Spring	43	AQ001-2	Body	63	RL094	Rotor Nut Lock S/C
23	PL020	Spring Holder	44	NL091	Stopper Bushing	64	AQ082-1	Kick Lever Guide
24	AQ087-1	Bail Spring Cover	45	NL084	Stopper-A	65	AQ077	Kick Lever S/C
25	AQ085	Rotor Cover S/C	46	NL063	Stopper-B	66	AQ080-1	Bearing Plate S/C
26	PL007	Arm Lever	47	AQ059	Stopper Lever	67	KQ057	Body Cover S/C

PLEASE ORDER BY PART NUMBER

Rev. 7/92

Zebco Division Brunswick Corporation, Box 270, Tulsa, OK 74101 USA 918-836-5581

