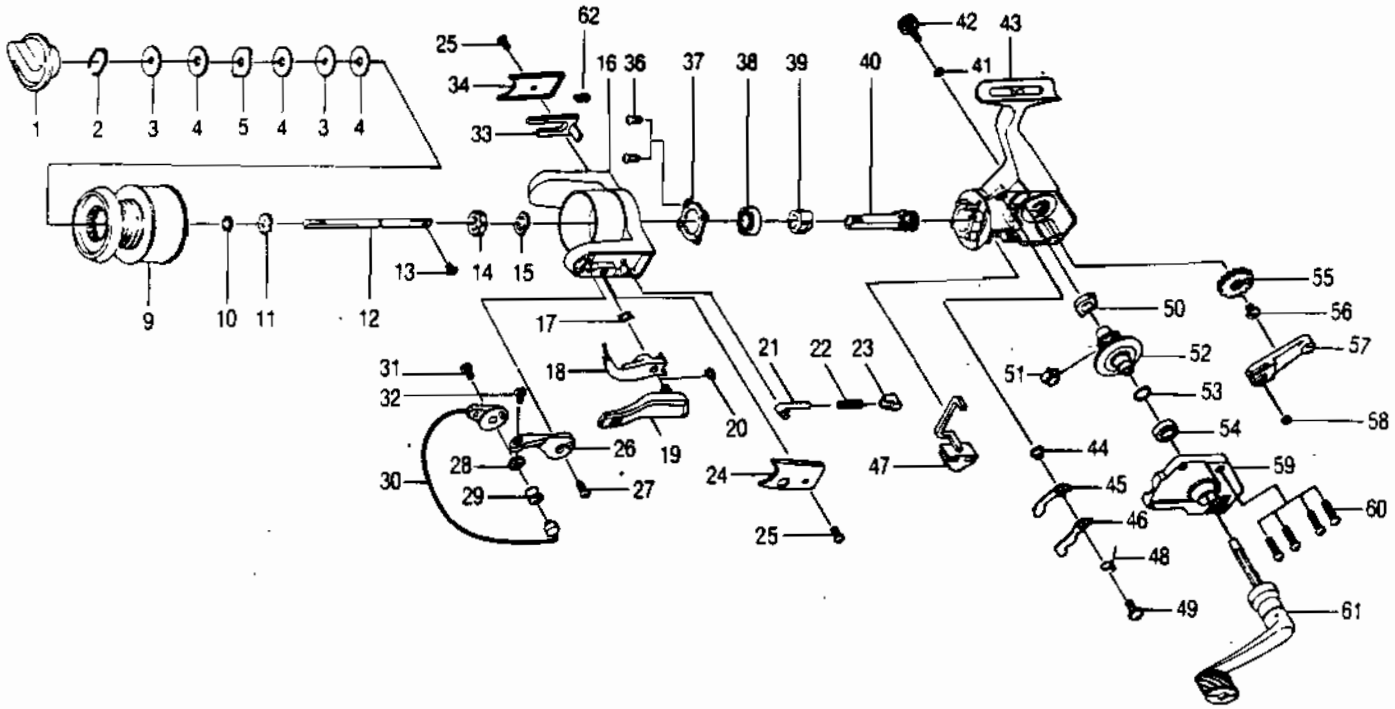


QUANTUM® SL5



KEY PART

NO.	NO.	DESCRIPTION
1	DQ332	DRAG KNOB ASSY.
2	CQ038	DRAG RETAINER
3	CQ050	SPOOL WASHER 'C'
4	CQ033	SPOOL WASHER 'A'
5	CQ029	SPOOL WASHER 'B'
9	DQ321	SPOOL ASSY.
10	CQ030	SPOOL ADJ. WASHER
11	CQ037	SPOOL CLICK CLAW
12	CQ015	MAIN SHAFT
13	CQ100	MAIN SHAFT SCREW
14	UL006	ROTOR NUT
15	UL065	ROTOR RETAINER WASHER
16	DQ009	ROTOR
17	NL096	TRIP LINK SPRING
18	PL097	TRIP LINK
19	CQ115	TRIP LEVER
20	NL034	E-CLIP
21	QL031	SPRING SHAFT
22	QL022	BAIL SPRING
23	QL020	SPRING HOLDER
24	DQ087	BAIL SPRING COVER
25	AQ085	ROTOR COVER SCREW
26	CQ007	ARM LEVER
27	AQ051	ARM LEVER SCREW
28	PL017	BAIL COLLAR
29	PL004	LINE ROLLER
30	DQ347	BAIL ASSY.
31	AQ044	BAIL HOLDER SCREW
32	AQ108	BAIL SCREW

KEY PART

NO.	NO.	DESCRIPTION
33	CQ019	KICK LEVER
34	DQ024	KICK LEVER COVER
36	AQ080	BEARING PLATE SCREW
37	QL040	BEARING PLATE
38	CQ028	B/BEARING - ROTOR
39	CQ060	RATCHET GEAR
40	CQ011	PINION GEAR
41	BQ105	HANDLE CAP WASHER
42	QL073	HANDLE SCREW CAP
43	DQ001	BODY
44	NL091	STOPPER BUSHING
45	QL064	STOPPER 'A'
46	QL063	STOPPER 'B'
47	CQ059	STOPPER LEVER
48	CQ061	STOPPER L/R SPRING
49	CQ083	STOPPER SCREW
50	AQ013	BODY BUSHING
51	CQ086	SLIDING SPRING
52	CQ012	DRIVE GEAR
53	AQ026	DRIVE GEAR ADJ. WASHER
54	AL013	BODY BUSHING
55	CQ053	BODY BEARING - ROTOR
56	WK078	OSC. GEAR SCREW
57	CQ025	O/S PIVOT ARM
58	AQ056	O/S PIVOT ARM WASHER
59	DQ023	BODY COVER
60	AQ057	BODY COVER SCREW
61	QL318	HANDLE ASSY.
62	YK049	KICK LEVER SPRING

WWW.REELDR.COM

Prices subject to change without notice. Prices do not include postage and handling.

PLEASE ORDER BY PART NUMBER

Rev. 11/90

Zebco Division Brunswick Corporation, Box 270, Tulsa, OK 74101 USA 918-636-5581

