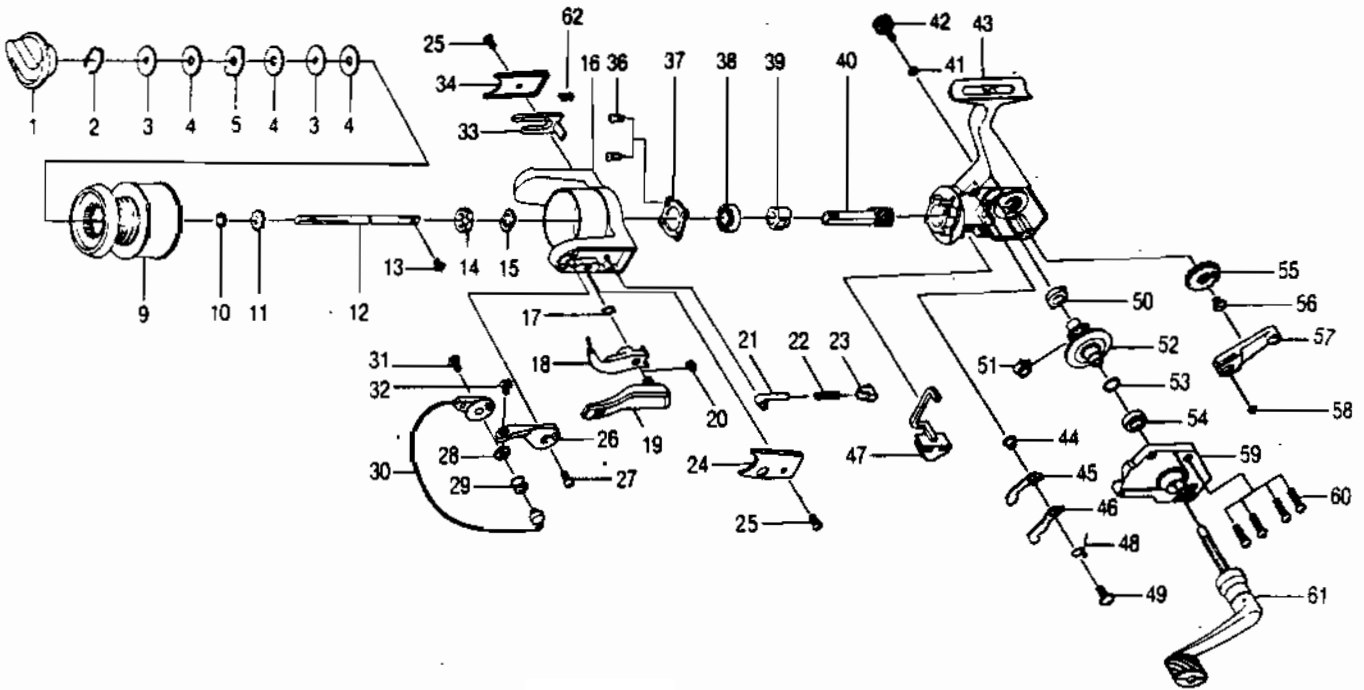


# QUANTUM® SL4



## KEY PART NO. NO.

KEY PART NO. NO.	DESCRIPTION
1 CQ332	DRAG KNOB ASSY.
2 CQ038	DRAG RETAINER
3 CQ050	SPOOL WASHER 'C'
4 CQ033	SPOOL WASHER 'A'
5 CQ029	SPOOL WASHER 'B'
9 CQ321	SPOOL ASSY.
10 CQ030	SPOOL ADJ. WASHER
11 CQ037	SPOOL CLICK CLAW
12 CQ015	MAIN SHAFT
13 CQ100	MAIN SHAFT SCREW
14 UL006	ROTOR NUT
15 UL065	ROTOR RETAINER WASHER
16 CQ009	ROTOR
17 NL096	TRIP LINK SPRING
18 PL097	TRIP LINK
19 CQ115	TRIP LEVER
20 NL034	E-CLIP
21 QL031	SPRING SHAFT
22 QL022	BAIL SPRING
23 QL020	SPRING HOLDER
24 CQ087	BAIL SPRING COVER
25 AQ085	ROTOR COVER SCREW
26 CQ007	ARM LEVER
27 AQ051	ARM LEVER SCREW
28 PL017	BAIL COLLAR
29 PL004	LINE ROLLER
30 CQ347	BAIL ASSY.
31 AQ044	BAIL HOLDER SCREW
32 AQ108	BAIL SCREW
33 CQ019	KICK LEVER

## KEY PART NO. NO.

KEY PART NO. NO.	DESCRIPTION
34 CQ024	KICK LEVER COVER
36 AQ080	BEARING PLATE SCREW
37 QL040	BEARING PLATE
38 CQ028	B/BEARING - ROTOR
39 CQ060	RATCHET GEAR
40 CQ011	PINION GEAR
41 BQ105	HANDLE CAP WASHER
42 QL073	HANDLE SCREW CAP
43 CQ001	BODY
44 NL091	STOPPER BUSHING
45 QL064	STOPPER 'A'
46 QL063	STOPPER 'B'
47 CQ059	STOPPER LEVER
48 CQ061	STOPPER L/R SPRING
49 CQ063	STOPPER SCREW
50 AQ013	BODY BUSHING
51 CQ086	SLIDING SPRING
52 CQ012	DRIVE GEAR
53 AQ026	DRIVE GEAR ADJ. WASHER
54 AL013	BODY BUSHING
55 CQ053	BODY BEARING - ROTOR
56 WK078	OSC. GEAR SCREW
57 CQ025	O/S PIVOT ARM
58 AQ036	O/S PIVOT ARM WASHER
59 CQ023	BODY COVER
60 AQ057	BODY COVER SCREW
61 QL318	HANDLE ASSY.
62 YK049	KICK LEVER SPRING

[WWW.REELDR.COM](http://WWW.REELDR.COM)

Prices subject to change without notice. Prices do not include postage and handling.

**PLEASE ORDER BY PART NUMBER**

Rev. 11/90

Zebco Division Brunswick Corporation, Box 270, Tulsa, OK 74101 USA 918-636-5581

