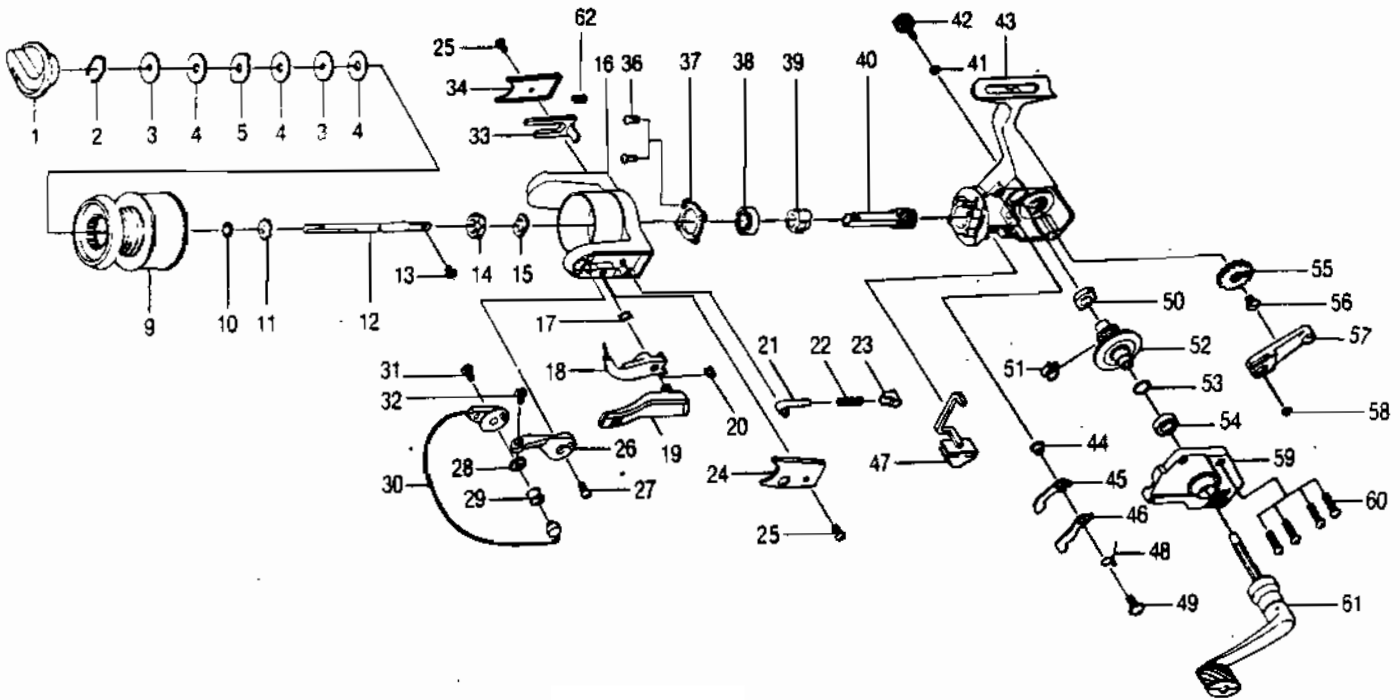


# QUANTUM® SL3



## KEY PART NO. NO.

KEY PART NO. NO.	DESCRIPTION
1 BQ332	DRAG KNOB ASSY.
2 AQ038	DRAG RETAINER
3 AQ050	SPOOL WASHER 'C'
4 AQ033	SPOOL WASHER 'A'
5 AQ029	SPOOL WASHER 'B'
9 BQ321	SPOOL ASSY.
10 BQ030	SPOOL ADJ. WASHER
11 BQ037	SPOOL CLICK CLAW
12 BQ015	MAIN SHAFT
13 AQ100	MAIN SHAFT SCREW
14 QL006	ROTOR NUT
15 QL065	ROTOR RETAINER WASHER
16 BQ009	ROTOR
17 NL098	TRIP LINE SPRING
18 PL097	TRIP GINK
19 PL115	TRIP LEVER
20 NL034	E-CLIP
21 QL031	SPRING SHAFT
22 QL022	BAIL SPRING
23 QL020	SPRING HOLDER
24 BQ087	BAIL SPRING COVER
25 AQ085	ROTOR COVER SCREW
26 PL007	ARM LEVER
27 AQ051	ARM LEVER SCREW
28 PL017	BAIL COLLAR
29 PL004	LINE ROLLER
30 BQ347	BAIL ASSY.
31 AQ044	BAIL HOLDER SCREW
32 AQ108	BAIL SCREW

## KEY PART NO. NO.

KEY PART NO. NO.	DESCRIPTION
33 YK019	KICK LEVER
34 BQ024	KICK LEVER COVER
36 AQ080	BEARING PLATE SCREW
37 QL040	BEARING PLATE
38 BQ028	B/BEARING - ROTOR
39 BQ060	RATCHET GEAR
40 BQ011	PINION GEAR
41 BQ105	HANDLE CAP WASHER
42 AL073	HANDLE SCREW
43 BQ001	BODY
44 NL091	STOPPER BUSHING
45 BQ064	STOPPER 'A'
46 BQ063	STOPPER 'B'
47 BQ059	STOPPER LEVER
48 BQ061	STOPPER L/R SPRING
49 AQ083	STOPPER SCREW
50 AQ013	BODY BUSHING
51 AQ086	SLIDING SPRING
52 BQ012	DRIVE GEAR
53 AQ026	DRIVE GEAR ADJ. WASHER
54 AL013	BODY BUSHING
55 BQ053	O/S GEAR
56 WK078	OSC. GEAR SCREW
57 BQ025	O/S PIVOT ARM
58 AQ056	O/S PIVOT ARM WASHER
59 BQ023	BODY COVER
60 AQ037	BODY COVER SCREW
61 AL318	HANDLE ASSY.
62 YK049	KICK LEVER SPRING

[WWW.REELDR.COM](http://WWW.REELDR.COM)

Prices subject to change without notice. Prices do not include postage and handling.

**PLEASE ORDER BY PART NUMBER**

Rev. 11/90

Zebco Division Brunswick Corporation, Box 270, Tulsa, OK 74101 USA 918-836-6581

**BC**  
BRUNSWICK