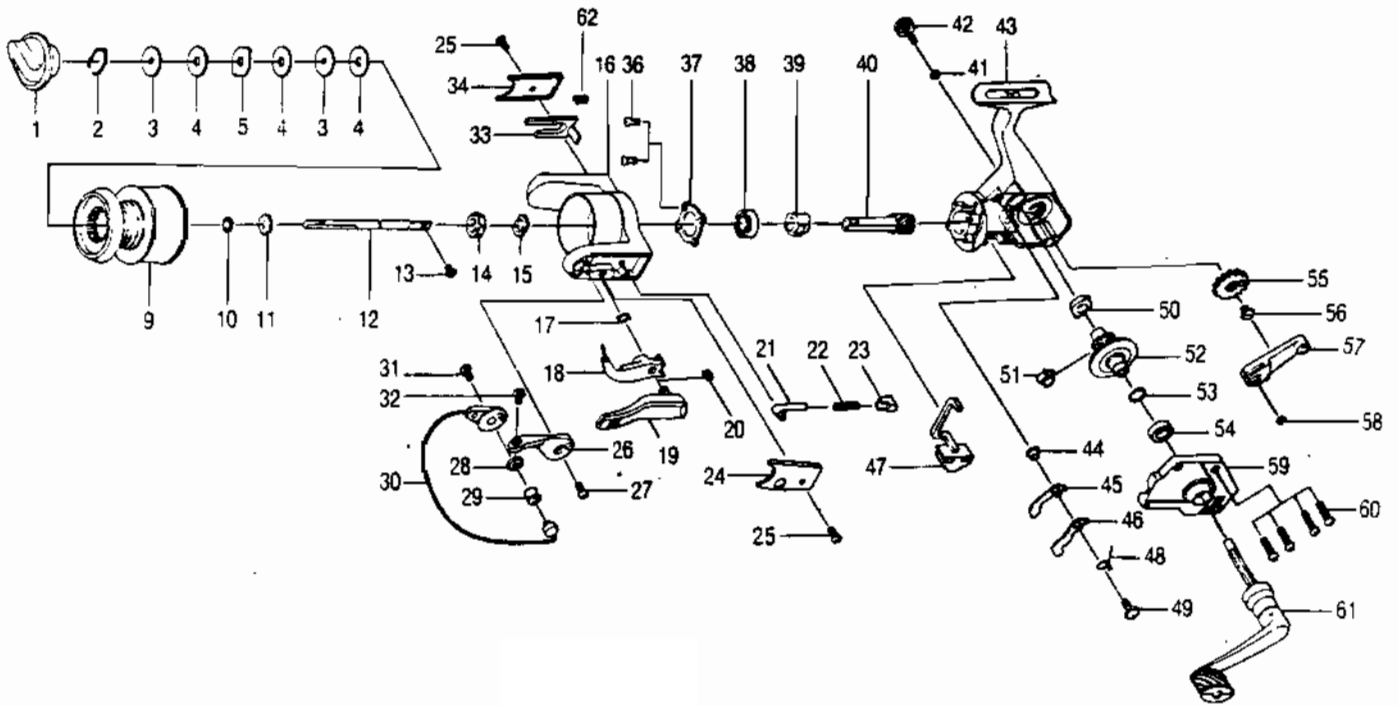


# QUANTUM SL2



## KEY PART NO. NO.

NO.	NO.	DESCRIPTION
1	AQ332	DRAG KNOB ASSY.
2	AQ038	DRAG RETAINER
3	AQ050	SPOOL WASHER 'C'
4	AQ033	SPOOL WASHER 'A'
9	AQ321	SPOOL ASSY.
10	AQ030	SPOOL ADJ. WASHER
11	AQ037	SPOOL CLICK CLAW
12	AQ015	MAIN SHAFT
13	AQ100	MAIN SHAFT SCREW
14	NL006	ROTOR NUT
15	NL065	ROTOR RETAINER WASHER
16	AQ009	ROTOR
17	NL096	TRIP LINK SPRING
18	PL097	TRIP LINK
19	PL115	TRIP LEVER
20	NL034	E-CLIP
21	NL031	SPRING SHAFT
22	NL022	BAIL SPRING
23	PL020	SPRING HOLDER
24	AQ087	BAIL SPRING COVER
25	AQ085	ROTOR COVER SCREW
26	PL007	ARM LEVER
27	AQ051	ARM LEVER SCREW
28	PL017	BAIL COLLAR
29	PL004	LINE ROLLER
30	AQ347	BAIL ASSY.
31	AQ044	BAIL HOLDER SCREW
32	AQ108	BAIL SCREW

## KEY PART NO. NO.

NO.	NO.	DESCRIPTION
33	AQ019	KICK LEVER
34	AQ024	KICK LEVER COVER
36	AQ080	BEARING PLATE SCREW
37	PL040	BEARING PLATE
38	AQ028	BODY BEARING - ROTOR
39	PL060	RATCHET GEAR
40	AQ011	PINION GEAR
41	AQ105	HANDLE CAP WASHER
42	NL073	HANDLE SCREW CAP
43	AQ001	BODY
44	NL091	STOPPER BUSHING
45	NL064	STOPPER 'A'
46	NL063	STOPPER 'B'
47	AQ059	STOPPER LEVER
48	AQ061	STOPPER L/R SPRING
49	AQ083	STOPPER SCREW
50	AQ013	BODY BUSHING
51	AQ086	SLIDING SPRING
52	AQ012	DRIVE GEAR
53	AQ026	DRIVE GEAR ADJ. WASHER
54	AL013	BODY BUSHING
55	AQ053	O/S GEAR
56	AQ078	O/S GEAR SCREW
57	AQ025	O/S PIVOT ARM
58	AQ056	O/S PIVOT ARM WASHER
59	AQ023	BODY COVER
60	AQ057	BODY COVER SCREW
61	NL318	HANDLE ASSY.
62	WRD49	KICK LEVER SPRING

[WWW.REELDR.COM](http://WWW.REELDR.COM)

Prices subject to change without notice. Prices do not include postage and handling.

**PLEASE ORDER BY PART NUMBER**

Rev. 11/90

Zebco Division Brunswick Corporation, Box 270, Tulsa, OK 74101 USA 918-836-5581

