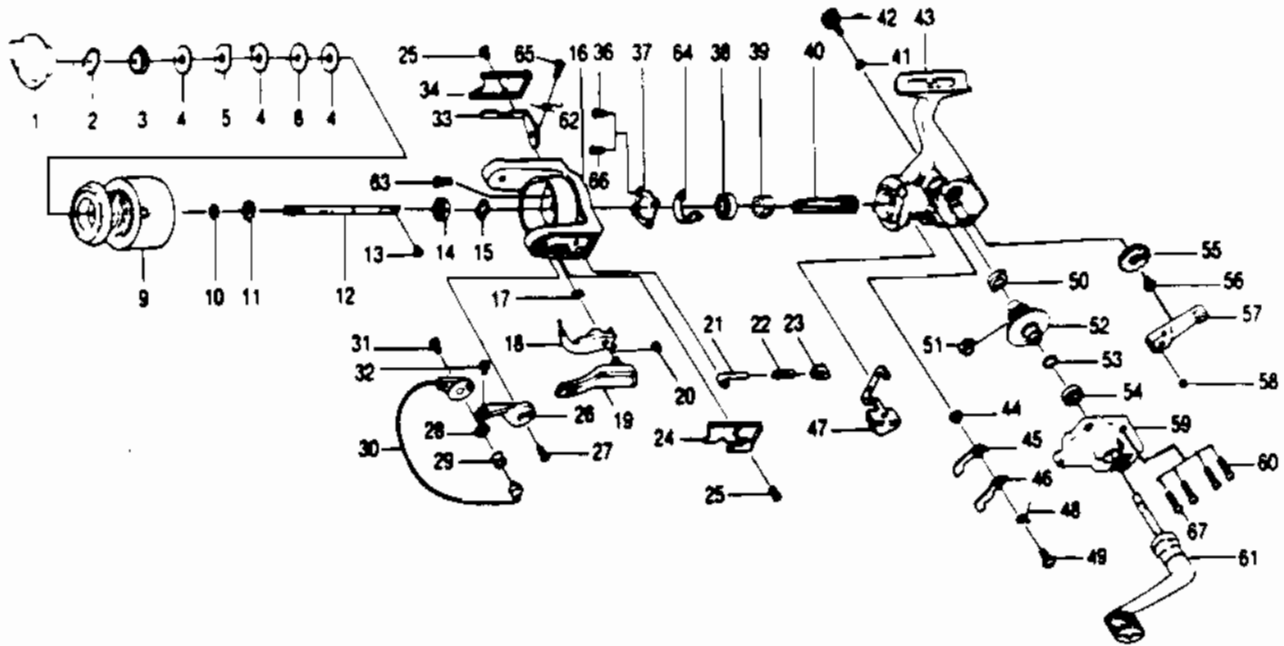


# QUANTUM SE5



Key No.	Part No.	Description	Key No.	Part No.	Description
1	CQ332	DRAG KNOB ASSY.	37	CQ040-1	BEARING PLATE
2	CQ038	DRAG RETAINER	38	CQ028	B/BEARING - ROTOR
3	CQ050	SPOOL WASHER 'C'	39	CQ060	RATCHET GEAR
4	CQ033	SPOOL WASHER 'A'	40	CQ011-1	PINION GEAR
5	CQ029	SPOOL WASHER 'B'	41	BQ105	HANDLE CAP WASHER
9	HQ321-1	SPOOL	42	QL073-1	HANDLE SCREW CAP
10	CQ030	SPOOL ADJ. WASHER	43	HC001-1	BODY
11	CQ037	SPOOL CLICK CLAW	44	NL091	STOPPER BUSHING
12	CQ015-1	MAIN SHAFT	45	QL064	STOPPER 'A'
13	AQ100	MAIN SHAFT SCREW	46	QL063	STOPPER 'B'
14	UL006	ROTOR NUT	47	CQ059	STOPPER LEVER
15	UL065	ROTOR RETAINER WASHER	48	CQ061	STOPPER L/R SPRING
16	HQ009-1	ROTOR	49	CQ083	STOPPER SCREW
17	NL096	TRIP LINK SPRING	50	AQ013-1	BODY BUSHING
18	PL097	TRIP LINK	51	CQ086	SLIDING SPRING
19	PL115	TRIP LEVER ASSY.	52	GQ012	DRIVE GEAR
20	NL034	E-CLIP	53	AQ026	DRIVE GEAR ADJ. WASHER
21	QL031	SPRING SHAFT	54	EQ157	B/B BODY COVER
22	QL022	BAIL SPRING	55	CQ053	BODY BEARING - ROTOR
23	QL020	SPRING HOLDER	56	WK078	OSC. GEAR SCREW
24	CQ087-1	BAIL SPRING COVER	57	CQ025	O/S PIVOT ARM
25	AQ085	ROTOR COVER SCREW	58	AQ056	O/S PIVOT ARM WASHER
26	GQ007-1	ARM LEVER	59	HQ023-1	BODY COVER
27	AQ051	ARM LEVER SCREW	60	AQ057	BODY COVER SCREW
28	EQ017-1	BAIL COLLAR	61	QL318-1	HANDLE ASSY
29	EQ004-1	LINE ROLLER	62	CQ049-1	KICK LEVER SPRING
30	HQ347-1	BAIL ASSY	63	RL094	ROTOR NUT LOCK SCREW
31	AQ044	BAIL HOLDER SCREW	64	CQ082-1	KICK LEVER GUIDE
32	SL108	BAIL SCREW	66	AQ080-1	BEARING PLATE S/C
33	DQ019-1	KICK LEVER			
34	CQ024-1	KICK LEVER COVER			
36	AQ080	BEARING PLATE SCREW			

WWW.REELDR.COM

Prices subject to change without notice. Prices do not include postage and handling.

**PLEASE ORDER BY PART NUMBER**

Rev. 5/93

Zebco Division Brunswick Corporation, Box 270, Tulsa, OK 74101 USA 918-836-5581

