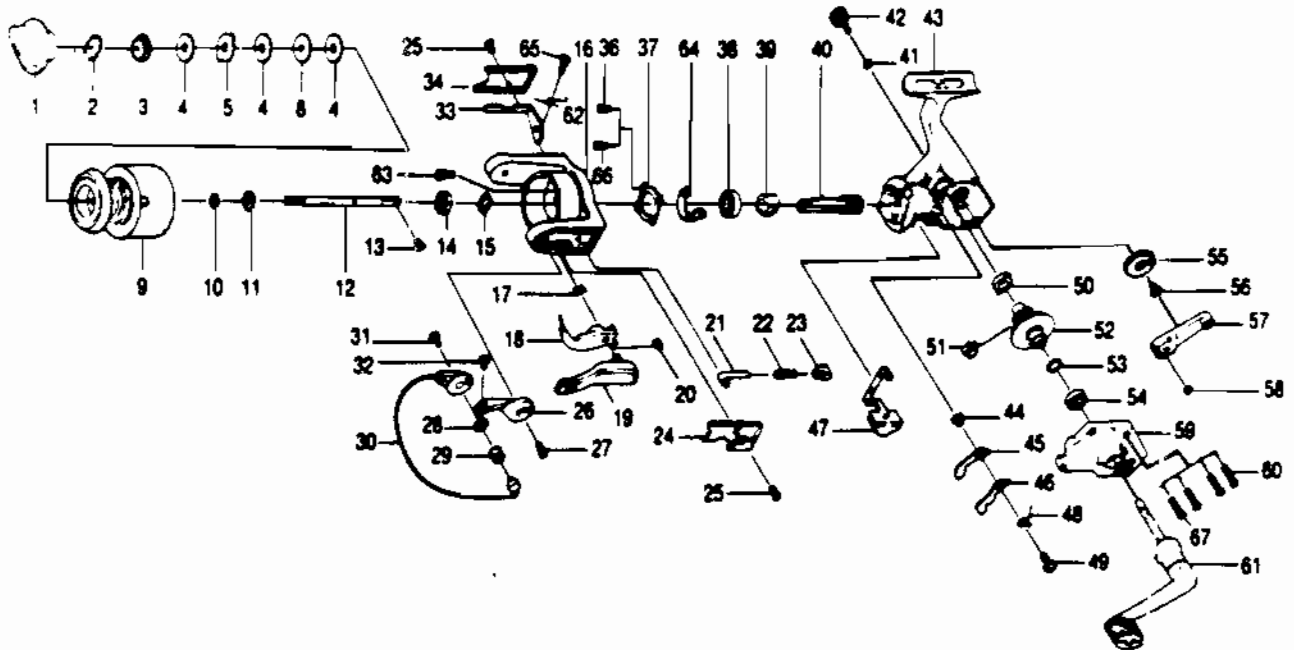


QUANTUM SE2



Key No.	Part No.	Description
1	AQ332	DRAG KNOB ASSY.
2	AQ038	DRAG RETAINER
3	AQ050	SPOOL WASHER 'C'
4	AQ033	SPOOL WASHER 'A'
5	AQ029	SPOOL WASHER 'B'
9	EQ321-1	SPOOL
10	AQ030	SPOOL ADJ. WASHER
11	AQ037	SPOOL CLICK CLAW
12	AQ015-1	MAIN SHAFT
13	AQ100	MAIN SHAFT SCREW
14	NL006	ROTOR NUT
15	NL065	ROTOR RETAINER WASHER
16	EQ009-1	ROTOR
17	NL096	TRIP LINK SPRING
18	PL097	TRIP LINK
19	PL115	TRIP LEVER ASSY.
20	NL034	E-CLIP
21	NL031	SPRING SHAFT
22	NL022	BAIL SPRING
23	PL020	SPRING HOLDER
24	AQ087-1	BAIL SPRING COVER
25	AQ085	ROTOR COVER SCREW
26	EQ007-1	ARM LEVER
27	AQ051	ARM LEVER SCREW
28	EQ017-1	BAIL COLLAR
29	EQ004-1	LINE ROLLER
30	EQ347-1	BAIL ASSY
31	AQ044	BAIL HOLDER SCREW
32	SL108	BAIL SCREW
33	AQ019-1	KICK LEVER
34	AQ024-1	KICK LEVER COVER
36	AQ080	BEARING PLATE SCREW

WWW.REELDR.COM

Key No.	Part No.	Description
37	AQ040-1	BEARING PLATE
38	AQ028	BODY BEARING - ROTOR
39	PL060	RATCHET GEAR
40	AQ011-1	PINION GEAR
41	AQ105	HANDLE CAP WASHER
42	NL073-1	HANDLE SCREW CAP
43	EQ001-1	BODY
44	NL091	STOPPER BUSHING
45	NL064	STOPPER 'A'
46	NL063	STOPPER 'B'
47	AQ059	STOPPER LEVER
48	AQ061	STOPPER L/R SPRING
49	AQ083	STOPPER SCREW
50	AQ013-1	BODY BUSHING
51	AQ086	SLIDING SPRING
52	EQ012	DRIVE GEAR
53	AQ026	DRIVE GEAR ADJ. WASHER
54	EQ157	B/B BODY COVER
55	AQ053	O/S GEAR
56	AQ078	O/S GEAR SCREW
57	AQ025	O/S PIVOT ARM
58	AQ056	O/S PIVOT ARM WASHER
59	EQ023-1	BODY COVER
60	KQ057	BODY COVER SCREW
61	NL318-1	HANDLE ASSY.
62	AQ049-1	KICK LEVER SPRING
63	RL094	ROTOR NUT LOCK SCREW
64	AQ082-1	KICK LEVER GUIDE
66	AQ080-1	BEARING PLATE S/C

Prices subject to change without notice. Prices do not include postage and handling.

PLEASE ORDER BY PART NUMBER

Rev. 5/93

Zebco Division Brunswick Corporation, Box 270, Tulsa, OK 74101 USA 918-836-5581

