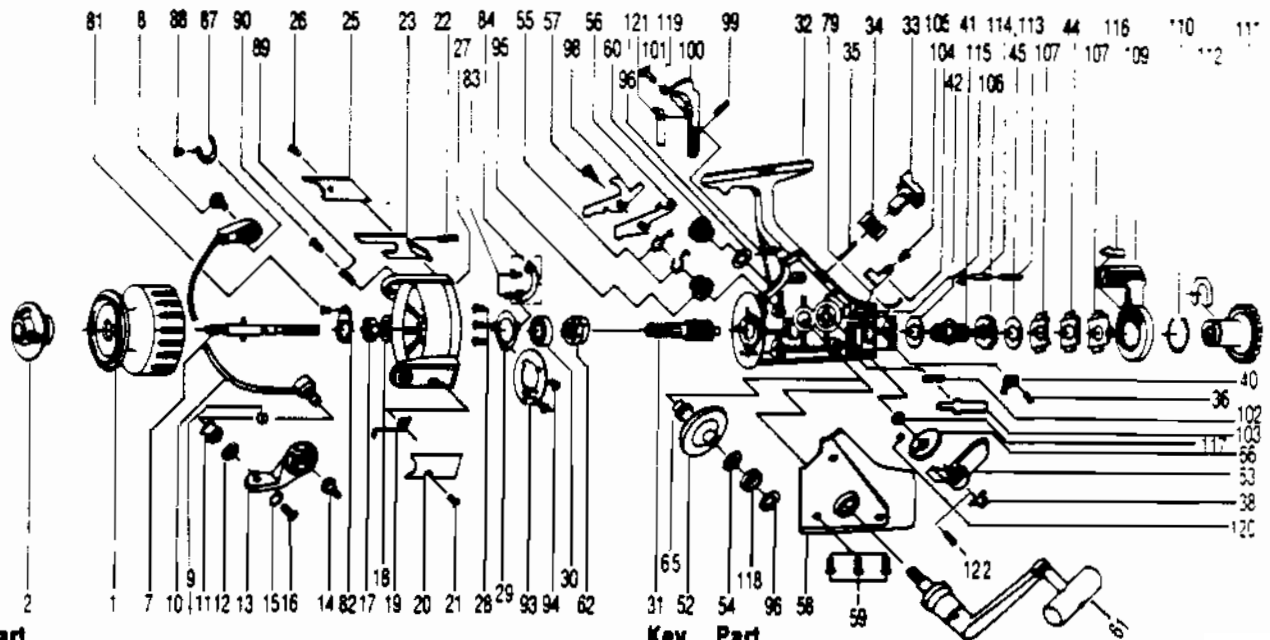


# QUANTUM QSS8

DISCONTINUED



Key No.	Part No.	Description
1	US321	SPOOL ASSY
2	US050	DRAG KNOB ASSY.
7	US315	MAIN SHAFT ASSY
8	US048	BAIL HOLDER SCREW
9	SS016	LINE ROLLER BUSHING
10	US347	BAIL ARM ASSY
11	US004	LINE ROLLER
12	US017	BAIL COLLAR
13	US007	ARM LEVER
14	US051	ARM LEVER SCREW
15	US102	BAIL WASHER
16	US108	BAIL SCREW
17	US006	ROTOR NUT
18	US065	ROTOR RETAINER WASHE
19	US022	BAIL SPRING
20	US087	BAIL SPR. COVER
21	US085	BAIL SPR. CVR. SCR.
22	US049	KICK LEVER SPRING
23	US019	KICK LEVER
25	US024	KICK LEVER COVER
26	RS037	KICK LVR. CVR. SCR.
27	US009	ROTOR
28	RS080	BEARING PLATE SCREW
29	US040	BEARING PLATE
30	US028	BALL BEARING
31	US011	PINION GEAR
32	US301	BODY ASSY
33	US059	ANTI-REVERSE LEVER
34	US090	A/R LEVER PLATE SCR.
35	NB091	A/R LEVER PIN
36	US067	CLICK CLAW SCREW
38	US083	OSC. SLIDER STOPPER
40	US068	CLICK CLAW
41	US104	SLIDER HOLDER
42	US046	DRAG WASHER 'C'
44	US030	DRAG WASHER 'A'
45	US039	DRAG WASHER 'B'
52	US012	DRIVE GEAR
53	US025	OSCILLATING SLIDER
54	US026	DRIVE GEAR ADJ. WSHR
55	US061	A/R CLAW SPRING
56	US063	A/R CLAW
57	US089	A/R CLAW SCREW
58	US323	BODY COVER ASSY

WWW.REELDR.COM

Key No.	Part No.	Description
59	US057	BODY COVER SCREW
60	RS073	HANDLE SCREW CAP
61	US318	HANDLE ASSY
62	US060	RATCHET GEAR
65	US001	O/S GEAR PINION
66	US053	OSCILLATING GEAR
79	US005	BACK CLAW
81	SS058	ROTOR NUT LOCK SCREW
82	SS088	ROTOR NUT LOCK
83	US182	KICK LEVER GUIDE SCR
84	US082	KICK LEVER GUIDE
87	US130	BAIL HOLDER SPRING
88	US131	BAIL HOLDER SPR SCR
89	US132	SPOOL LOCK PIN SPR.
90	US133	SPOOL LOCK PIN
93	US134	KICK LEVER LOCK PLT.
94	US135	KICK LVR LCK PLT SCR
95	US136	ANTI-REVERSE GEAR
96	US137	BALL BEARING CVR WSH
98	US138	ANTI-REVERSE CLAW B
99	US139	A/R ACTUATOR SPR.
100	US140	A/R ACTUATOR
101	US141	A/R ACTUATOR SCR.
102	US142	MAIN SHAFT STOP. SP
103	US143	MAIN SHAFT STOPPER
104	US144	STOPPER PLATE
105	RS145	STOPPER PLATE SCR.
106	US146	SL. HOLDER RATCHET
107	US147	DRAG SPR. WASHER A
109	US148	BAIL CLICK ACTUATOR
110	US149	BAIT DRAG RING
111	US150	BAIT CLICK DRAG KN.
112	US151	BT CLICK DRAG KN RE
113	US152	BT CLICK LOCK SH SP
114	US153	BT CLICK LOCK SHAFT
115	US154	'E' CLIP
116	US155	BAIT INSERT
117	US156	O/S GEAR BUSHING
118	US157	BALL BEARING
119	US158	A/R ACT CV OSC BUSH
120	US159	O/S GEAR BOSS BUSH
121	US160	A/R ACTUATOR COVER
122	RS161	O/S STOPPER SCREW

Prices subject to change without notice. Prices do not include postage and handling. Some parts may not be available.

**PLEASE ORDER BY PART NUMBER**

Rev. 5/93

Zebco Division Brunswick Corporation, Box 270, Tulsa, OK 74101 USA 918-836-5581

