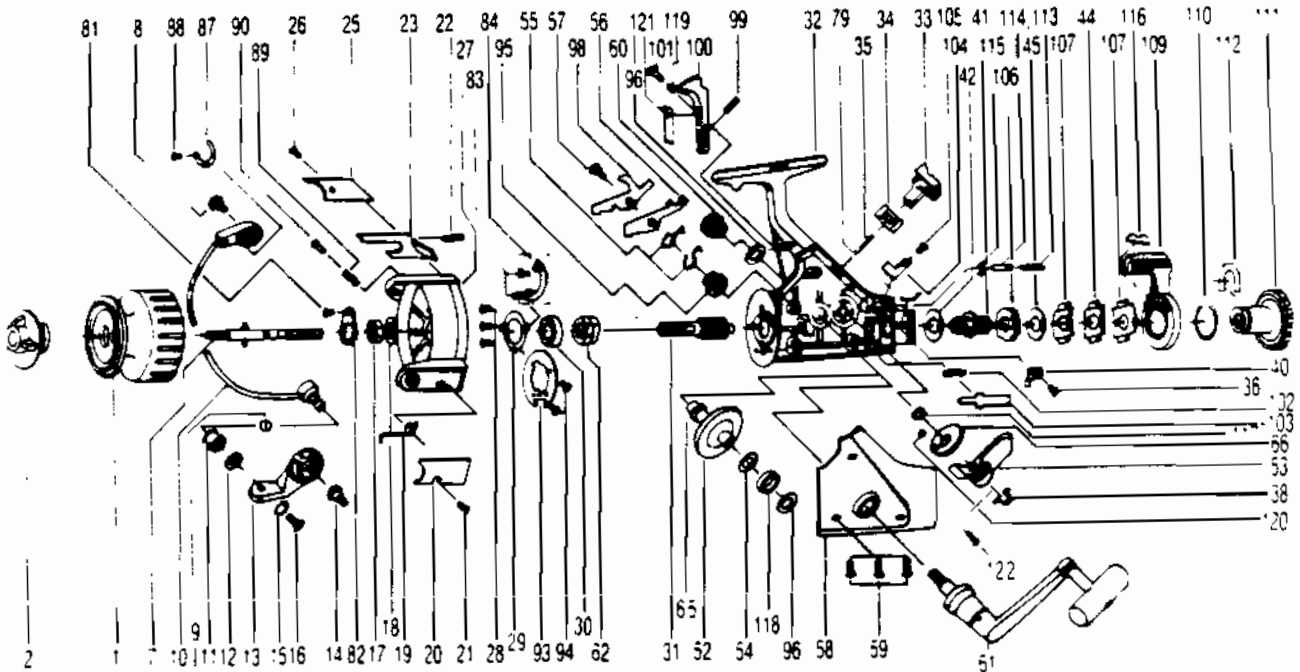


# QUANTUM® QSS8



[WWW.REELDR.COM](http://WWW.REELDR.COM)

## KEY PART

NO. NO.	DESCRIPTION
1 US321	SPOOL ASSY
2 US050	DRAG KNOB ASSY.
7 US315	MAIN SHAFT ASSY
8 US048	BAIL HOLDER SCREW
9 SS016	LINE ROLLER BUSHING
10 RS347	BAIL ARM ASSY
11 US004	LINE ROLLER
12 US017	BAIL COLLAR
13 US007	ARM LEVER
14 US091	ARM LEVER SCREW
15 US102	BAIL WASHER
16 US108	BAIL SCREW
17 US006	ROTOR NUT
18 US065	ROTOR RETAINER WASHE
19 US022	BAIL SPRING
20 US087	BAIL SPR. COVER
21 US085	BAIL SPR. CVR. SCR.
22 US049	KICK LEVER SPRING
23 US019	KICK LEVER
25 US024	KICK LEVER COVER
26 RS037	KICK LVR. CVR. SCR.
27 US009	ROTOR
28 RS080	BEARING PLATE SCREW
29 US040	BEARING PLATE
30 US028	BALL BEARING
31 US011	PINION GEAR
32 US301	BODY ASSY
33 US059	ANTI-REVERSE LEVER
34 US090	A/R LEVER PLATE SCR.
35 NB091	A/R LEVER PIN
36 US067	CLICK CLAW SCREW
38 US083	OSC. SLIDER STOPPER
40 US068	CLICK CLAW
41 US104	SLIDER HOLDER
42 US046	DRAG WASHER "C"
44 US030	DRAG WASHER "A"
45 US039	DRAG WASHER "B"
52 US012	DRIVE GEAR
53 US025	OSCILLATING SLIDER
54 US026	DRIVE GEAR ADJ. WSHR
55 US061	A/R CLAW SPRING
56 US063	A/R CLAW
57 US089	A/R CLAW SCREW
58 US323	BODY COVER ASSY

## KEY PART

NO. NO.	DESCRIPTION
59 US057	BODY COVER SCREW
60 RS073	HANDLE SCREW CAP
61 US318	HANDLE ASSY
62 US060	RATCHET GEAR
65 US001	O/S GEAR PINION
66 US053	OSCILLATING GEAR
79 US005	BACK CLAW
81 SS058	ROTOR NUT LOCK SCREW
82 SS088	ROTOR NUT LOCK
83 US182	KICK LEVER GUIDE SCR
84 US082	KICK LEVER GUIDE
87 US130	BAIL HOLDER SPRING
88 US131	BAIL HOLDER SPR SCR
89 US132	SPOOL LOCK PIN SPR.
90 US133	SPOOL LOCK PIN
93 US134	KICK LEVER LOCK PLT.
94 US135	KICK LVR LCK PLT SCR
95 US136	ANTI-REVERSE GEAR
96 US137	BALL BEARING CVR WSH
98 US138	ANTI-REVERSE CLAW B
99 US139	A/R ACTUATOR SPR.
100 US140	A/R ACTUATOR
101 US141	A/R ACTUATOR SCR.
102 US142	MAIN SHAFT STOP. SP
103 US143	MAIN SHAFT STOPPER
104 US144	STOPPER PLATE
105 RS145	STOPPER PLATE SCR.
106 US146	SL. HOLDER RATCHET
107 US147	DRAG SPR. WASHER A
109 US148	BAIL CLICK ACTUATOR
110 US149	BAIT DRAG RING
111 US150	BAIT CLICK DRAG KN.
112 US151	BT CLICK DRAG KN RE
113 US152	BT CLICK LOCK SH SP
114 US153	BT CLICK LOCK SHAFT
115 US154	"E" CLIP
116 US155	BAIT INSERT
117 US156	O/S GEAR BUSHING
118 US157	BALL BEARING
119 US158	A/R ACT CV OSC BUSH
120 US159	O/S GEAR BOSS BUSH
121 US160	A/R ACTUATOR COVER
122 RS161	O/S STOPPER SCREW

Prices subject to change without notice. Prices do not include postage and handling.

**PLEASE ORDER BY PART NUMBER**

Rev. 11/90

Zebco Division Brunswick Corporation, Box 270, Tulsa, OK 74101 USA 918-836-5581

