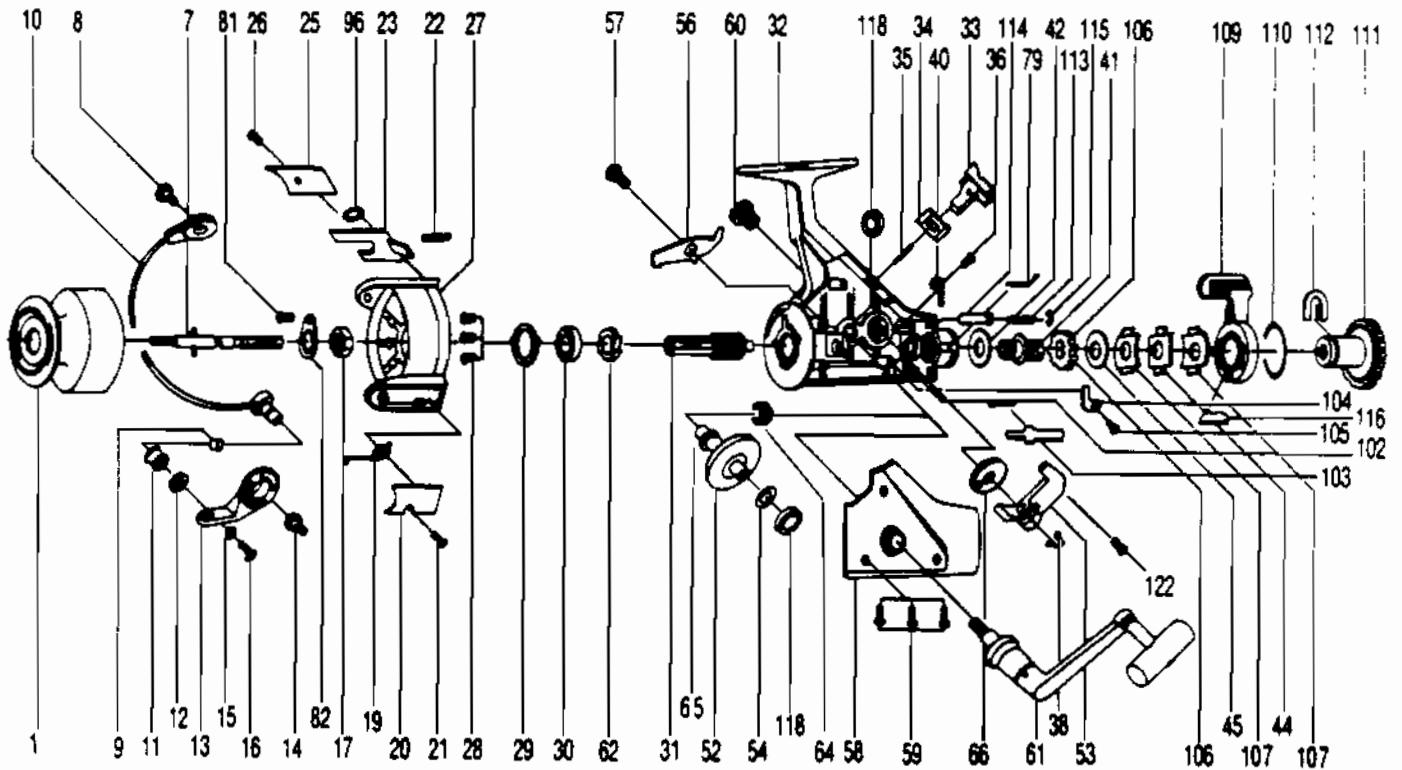


QUANTUM QSS5

DISCONTINUED



Key No.	Part No.	Description
1	SS321	SPOOL ASSY.
2	SS050	DRAG KNOB ASSY
7	SS315	MAIN SHAFT ASSY
8	SS048	BAIL HOLDER SCREW
9	SS016	LINE ROLLER BUSHING
10	SS347	BAIL ARM ASSY
11	SS004	LINE ROLLER
12	SS017	BAIL COLLAR
13	SS007	ARM LEVER
14	SS051	ARM LEVER SCREW
15	NB102	BAIL AXLE WASHER
16	RS108	BAIL SCREW
17	NB006	ROTOR NUT
19	SS022-1	BAIL SPRING
20	SS087	BAIL SPRING COVER
21	RS085	BAIL SPR. CVR. SCR.
22	SS049	KICK LEVER SPRING
23	SS019	KICK LEVER
25	SS024	KICK LEVER COVER
26	RS037	KICK LVR. CVR. SCR.
27	SS009	ROTOR
28	RS080	BEARING PLATE SCREW
29	SS040	BEARING PLATE
30	SS028	BALL BEARING
31	SS011	PINION GEAR
32	SS301	BODY ASSY
33	SS059	ANTI-REVERSE LEVER
34	SS090	A/R LEVER PLATE
35	NB091	A/R LEVER PIN
36	RS067	CLICK CLAW SCREW
38	SS083	OSC. SLDR. STOPPER
40	SS068	CLICK CLAW
41	SS104	SLIDER HOLDER
42	SS046	DRAG WASHER 'C'
44	SS030	DRAG WASHER 'A'

WWW.REELDR.COM

Key No.	Part No.	Description
45	SS039	DRAG WASHER 'B'
52	SS012	DRIVE GEAR
53	SS025	OSCILLATING SLIDER
54	RS026	DRIVE GEAR ADJ. WASH
56	SS063	ANTI-REVERSE CLAW
57	SS089	A/R CLAW SCREW
58	SS323	BODY COVER ASSY
59	RS057	BODY COVER SCREW
60	RS073	HANDLE SCREW CAP
61	SS318	HANDLE ASSY
62	SS060	RATCHET GEAR
64	NB086	SLIDER SPRING
65	SS001	O/S GEAR PINION
66	SS053	OSCILLATING GEAR
79	RS005	BACK CLAW
81	SS058	ROTOR NUT LOCK SCREW
82	SS088	ROTOR NUT LOCK
96	RS137	B. BEARING CVR. WASH.
102	SS142	M/SHAFT STP. SPR.
103	SS143	M/SHAFT STOPPER
104	SS144	STOPPER PLATE
105	RS145	STOPPER PLATE SCR.
106	SS146	SLIDER HOLDER RAT.
107	SS147	DRAG SPR. WASH 'A'
109	SS148	BAIT CLICK ACTUATOR
110	SS149	BAIT DRAG RING
111	SS150	BAIT CLICK DRAG KN.
112	SS151	BT/CLK DRAG KN RET
113	SS152	BT/LCK SHAFT SPR.
114	SS153	BT/CLK LCK SH SPR
115	SS154	E CLIP
116	SS155	BAIT INSERT
118	RS157	BALL BEARING
122	RS161	O/S STOPPER SCREW

Prices subject to change without notice. Prices do not include postage and handling. Some parts may not be available.

PLEASE ORDER BY PART NUMBER

Rev. 5/93

Zebco Division Brunswick Corporation, Box 270, Tulsa, OK 74101 USA 918-836-5581

