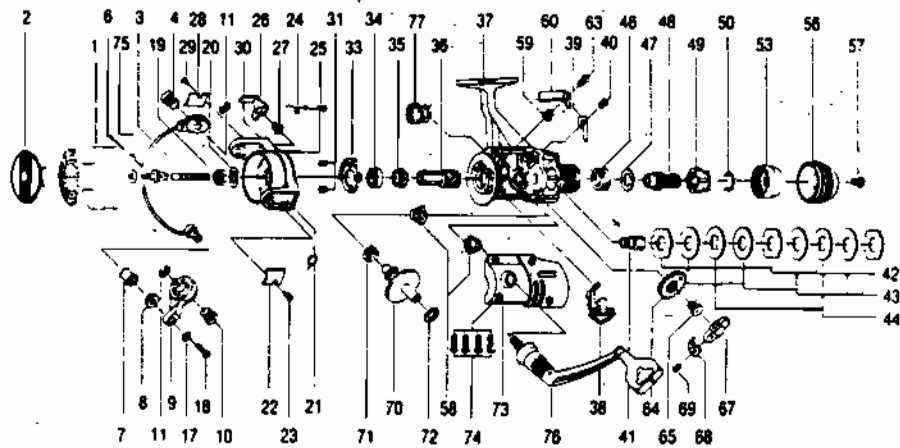


# QUANTUM QP40, QP50, QP70



## QP40

KEY PART NO. NO.	DESCRIPTION
1	KL321 SPOOL ASSY.
3	DT315 MAIN SHAFT ASSY.
4	DT051 BAIL HOLDER PIN
6	DT347 BAIL ARM ASSY.
7	DT004 LINE ROLLER
8	DT017 SLIDING SCREW
9	DT007 ARM LEVER
10	DT116 ARM LEVER PIN
11	DT034 E-CLIP
17	DT102 BAIL AXLE WASHER
18	DT108 BAIL AXLE SCREW
19	DT006 ROTOR NUT
20	DT065 ROTOR RETAINER
21	DT022 BAIL SPRING
22	DT024 BAIL SPRING COVER
23	DT085 BAIL SPR. COVER SCREW
24	DT049 KICK LEVER SPRING
25	DT058 KICK LEVER SPR. SCR.
26	DT019 KICK LEVER
27	DT037 KICK LEVER SCREW
28	DT024 BAIL SPRING COVER
29	DT085 BAIL SPR. COVER SCREW
30	KL009 ROTOR ASSY.
31	DT080 BEARING PLATE SCREW
33	DT040 BEARING PLATE
34	DT034 E-CLIP
35	DT060 A/R RATCHET
36	DT011 PINION GEAR
37	KL301 BODY ASSY.
38	DT059 ANTI-REVERSE LEVER
39	DT068 CLICK CLAM
40	DT085 BAIL SPR. COVER SCREW
41	DT104 SLIDER HOLDER
42	DT030 REAR DRAG WSHR. "A"
43	DT039 REAR DRAG WSHR. "B"
44	DT045 REAR DRAG WASHR "D"
46	DT043 ARM LEVER PIN
47	DT046 REAR DRAG ADJ. WSHR.
48	DT112 REAR DRAG NUT
49	DT029 SLIDING SCREW
50	DT033 BACK CLICK CLAM
53	DT132 REAR DRAG STOPPER
56	KL032 REAR DRAG CAP
57	DT079 REAR DRAG CAP SCREW
58	DT013 BODY COVER BUSHING
59	DT091 A/R CLAM BUSHING
60	DT063 A/R CLAM (N)
63	DT083 A/R CLAM SCREW
64	DT053 OSC. GEAR
65	DT035 OSC. GEAR SCREW
67	DT025 OSC. SLIDER
68	DT078 STOPPER
69	DT161 STOPPER SCREW
70	DT012 CRANK GEAR
71	DT086 SLIDER SPRING
72	DT026 CRANK GEAR SHIM
73	KL323 BODY COVER ASSY.
74	DT057 BODY COVER SCREW
76	JT318 HANDLE ASSEMBLY
77	CT073 HANDLE SCREW CAP

## QP50

KEY PART NO. NO.	DESCRIPTION
1	LL321 SPOOL ASSY.
3	ET315 MAIN SHAFT ASSY.
4	DT051 BAIL HOLDER PIN
6	ET347 BAIL ARM ASSY.
7	ET004 LINE ROLLER
8	ET017 BAIL COLLAR
9	ET007 BAIL ARM 'A'
10	ET116 ARM LEVER PIN
11	DT034 E-CLIP
17	ET102 BAIL AXLE WASHER
18	ET108 BAIL AXLE SCREW
19	ET006 ROTOR NUT
20	DT065 ROTOR RETAINER
21	ET022 BAIL SPRING
22	ET024 KICK LEVER COVER
23	DT085 BAIL SPR. COVER SCREW
24	DT049 KICK LEVER SPRING
25	DT058 KICK LEVER SPR. SCR.
26	ET019 KICK LEVER
27	ET037 KICK LEVER SCREW
28	ET024 KICK LEVER COVER
29	DT085 BAIL SPR. COVER SCREW
30	LL009 ROTOR ASSY.
31	DT080 BEARING PLATE SCREW
33	DT040 BEARING PLATE
34	DT028 BALL BEARING
35	DT060 A/R RATCHET
36	DT011 PINION GEAR
37	LL301 BODY ASSY.
38	DT059 ANTI-REVERSE LEVER
39	DT068 CLICK CLAM
40	DT085 BAIL SPR. COVER SCREW
41	DT104 SLIDER HOLDER
42	DT030 REAR DRAG WSHR. "A"
43	DT039 REAR DRAG WSHR. "B"
44	DT045 REAR DRAG WASHR "D"
46	DT043 ARM LEVER PIN
47	DT046 REAR DRAG ADJ. WSHR.
48	DT112 REAR DRAG NUT
49	DT029 SLIDING SCREW
50	DT033 BACK CLICK CLAM
53	DT132 REAR DRAG STOPPER
56	KL032 REAR DRAG CAP
57	DT079 REAR DRAG CAP SCREW
58	DT013 BODY COVER BUSHING
59	DT091 A/R CLAM BUSHING
60	DT063 A/R CLAM (N)
63	DT083 A/R CLAM SCREW
64	DT053 OSC. GEAR
65	DT035 OSC. GEAR SCREW
67	DT025 OSC. SLIDER
68	DT078 STOPPER
69	DT161 STOPPER SCREW
70	DT012 CRANK GEAR
71	DT086 SLIDER SPRING
72	DT026 CRANK GEAR SHIM
73	LL323 BODY COVER ASSY.
74	DT057 BODY COVER SCREW
76	KL318 HANDLE ASSY.
77	CT073 HANDLE SCREW CAP

## QP70

KEY PART NO. NO.	DESCRIPTION
1	ML321 SPOOL ASSY.
2	ML050 DRAG KNOB ASSY.
3	FT315 MAIN SHAFT ASSY.
4	FT051 BAIL HOLDER PIN
6	FT347 BAIL ARM ASSY.
7	FT004 LINE ROLLER
8	FT017 SLIDING SCREW
9	FT007 ARM LEVER
10	FT116 ARM LEVER PIN
11	DT034 E-CLIP
17	FT102 BAIL WASHER
18	FT108 BAIL AXLE SCREW
19	FT006 ROTOR NUT
20	DT065 ROTOR RETAINER
21	FT022 BAIL SPRING
22	FT024 BAIL SPRG/TRIP LVR. COVER
23	DT085 BAIL SPR. COVER SCREW
24	FT049 KICK LEVER SPRING
25	DT058 KICK LEVER SPR. SCR.
26	FT019 KICK LEVER
27	FT037 KICK LEVER SCREW
28	FT024 BAIL SPRG/TRIP LVR. COVER
29	DT085 BAIL SPR. COVER SCREW
30	ML009 ROTOR ASSY.
31	DT080 BEARING PLATE SCREW
33	FT040 BEARING PLATE
34	FT028 BALL BEARING
35	FT060 A/R RATCHET
36	FT080 A/R RATCHET
37	DT011 PINION GEAR
38	DT059 A/R LEVER
39	DT068 CLICK CLAM
40	DT085 BAIL SPR. COVER SCREW
41	FT104 SLIDER HOLDER
42	FT030 REAR DRAG WASH. "A"
43	FT039 REAR DRAG WASH. "B"
44	FT045 REAR DRAG WASHR "D"
46	FT043 ARM LEVER PIN
47	FT046 REAR DRAG ADJ. WSHR.
48	DT112 REAR DRAG NUT
49	FT029 SLIDING SCREW
50	FT033 BACK CLICK CLAM
53	FT132 REAR DRAG STOPPER
56	ML032 REAR DRAG CAP
57	DT079 REAR DRAG CAP SCREW
58	FT013 BODY CVR. BUSHING
59	DT091 A/R CLAM BUSHING
60	FT063 A/R CLAM (N)
63	DT083 A/R CLAM SCREW
64	FT053 OSCILLATING GEAR
65	FT035 OSC. GEAR SCREW
67	FT025 OSC. GEAR SCREW
68	FT078 OSCILLATOR SLIDER
69	DT161 STOPPER SCREW
70	FT012 DRIVE GEAR
71	FT086 SLIDER SPRING
72	DT026 CRANK GEAR SHIM
73	ML323 BODY COVER ASSY.
74	DT057 BODY COVER SCREW
75	FT056 SPOOL ADJ. WASHER
76	ML318 HANDLE ASSY.
77	CT073 HANDLE SCREW CAP

WWW.REELDR.COM

Prices subject to change without notice. Prices do not include postage and handling.

**PLEASE ORDER BY PART NUMBER**

Rev. 9/89

Zebco Division Brunswick Corporation, Box 270, Tulsa, OK 74101 USA 918-836-5581