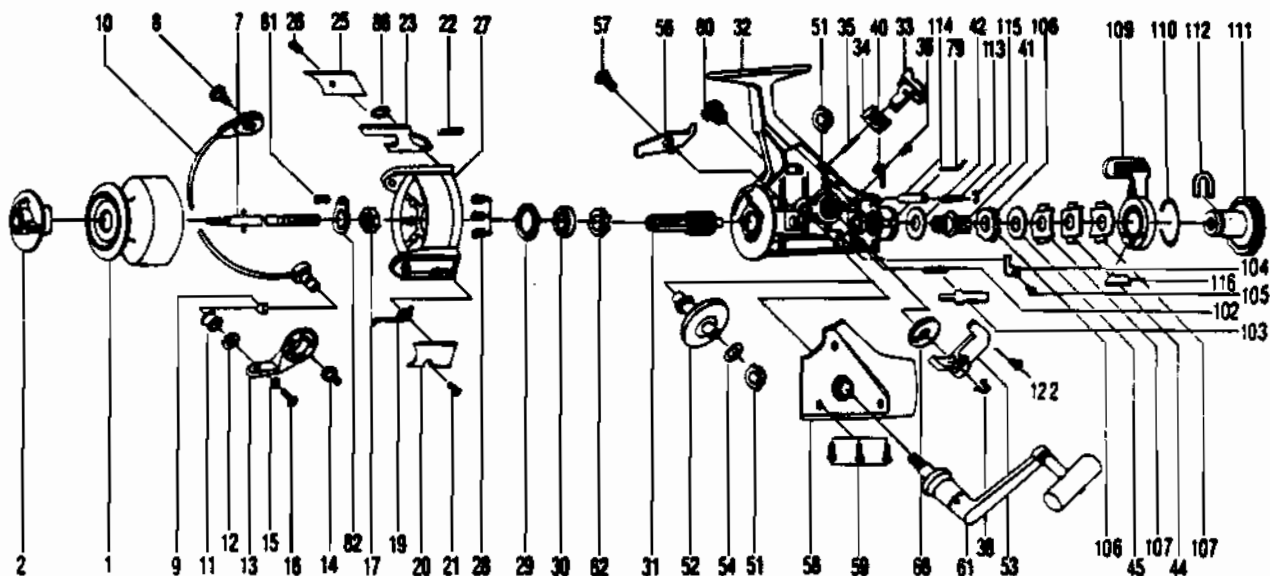


# QUANTUM QMD45



| KEY PART NO. NO. | DESCRIPTION         |
|------------------|---------------------|
| 1 Z0321          | SPOOL ASSY          |
| 2 Z0050          | DRAG KNOB ASSY      |
| 7 Z0315          | MAIN SHAFT ASSY     |
| 8 SS048          | BAIL HOLDER SCREW   |
| 9 SS016          | LINE ROLLER BUSHING |
| 10 SS347         | BAIL ARM ASSY       |
| 11 SS004         | LINE ROLLER         |
| 12 SS017         | BAIL COLLAR         |
| 13 SS007         | ARM LEVER           |
| 14 SS051         | ARM LEVER SCREW     |
| 15 NB102         | BAIL AXLE WASHER    |
| 16 RS108         | BAIL SCREW          |
| 17 NB006         | ROTOR NUT           |
| 19 SS022         | BAIL SPRING         |
| 20 Z0087         | BAIL SPRING COVER   |
| 21 RS085         | BAIL SPR. CVR. SCR. |
| 22 SS049         | KICK LEVER SPRING   |
| 23 SS019         | KICK LEVER          |
| 25 SS024         | KICK LEVER COVER    |
| 26 RS037         | KICK LVR. CVR. SCR. |
| 27 SS009         | ROTOR               |
| 28 RS080         | BEARING PLATE SCREW |
| 29 SS040         | BEARING PLATE       |
| 30 SS028         | BALL BEARING        |
| 31 Z0011         | PINION GEAR         |
| 32 Z0301         | BODY ASSY           |
| 33 SS059         | ANTI-REVERSE LEVER  |
| 34 SS090         | A/R LEVER PLATE     |
| 35 NB091         | A/R LEVER PIN       |
| 36 RS067         | CLICK CLAW SCREW    |
| 38 SS083         | OSC. SLDR. STOPPER  |
| 40 SS068         | CLICK CLAW          |
| 41 SS104         | SLIDER HOLDER       |
| 42 SS046         | DRAG WASHER "C"     |

| KEY PART NO. NO. | DESCRIPTION          |
|------------------|----------------------|
| 44 SS030         | DRAG WASHER "A"      |
| 45 SS039         | DRAG WASHER "B"      |
| 51 RS013         | BODY/BODY COVER BUSH |
| 52 Z0012         | DRIVE GEAR           |
| 53 SS025         | OSCILLATING SLIDER   |
| 54 RS026         | DRIVE GEAR ADJ. WASH |
| 56 SS063         | ANTI-REVERSE CLAW    |
| 57 SS089         | A/R CLAW SCREW       |
| 58 Z0323         | BODY COVER ASSY      |
| 59 RS057         | BODY COVER SCREW     |
| 60 Y0073         | HANDLE SCREW CAP     |
| 61 Z0318         | HANDLE ASSY          |
| 62 SS060         | RATCHET GEAR         |
| 64 NB086         | SLIDER SPRING        |
| 65 NB086         | SLIDER SPRING        |
| 66 Z0053         | OSCILLATING GEAR     |
| 79 RS005         | BACK CLAW            |
| 81 SS058         | ROTOR NUT LOCK SCREW |
| 82 SS088         | ROTOR NUT LOCK       |
| 102 SS142        | M/SHAFT STP. SPR.    |
| 103 SS143        | M/SHAFT STOPPER      |
| 104 SS144        | STOPPER PLATE        |
| 105 RS145        | STOPPER PLATE SCR.   |
| 106 SS146        | SLIDER HOLDER RAT.   |
| 107 SS147        | DRAG SPR. WASH "A"   |
| 109 Z0148        | BAIL CLICK ACTUATOR  |
| 110 SS149        | BAIL DRAG RING       |
| 111 Z0150        | BAIL CLICK DRAG KN   |
| 112 SS151        | BT/CLK DRAG KN RET   |
| 113 SS152        | BT/LCK SHAFT SPR.    |
| 114 SS153        | BT/CLK LCK SH SPR    |
| 115 SS154        | E CLIP               |
| 116 SS155        | BAIL INSERT          |
| 117 RS161        | O/S STOPPER SCREW    |

[WWW.REELDR.COM](http://WWW.REELDR.COM)

Prices subject to change without notice. Prices do not include postage and handling.

**PLEASE ORDER BY PART NUMBER**

Rev. 11/90

Zebco Division Brunswick Corporation, Box 270, Tulsa, OK 74101 USA 918-836-5581

