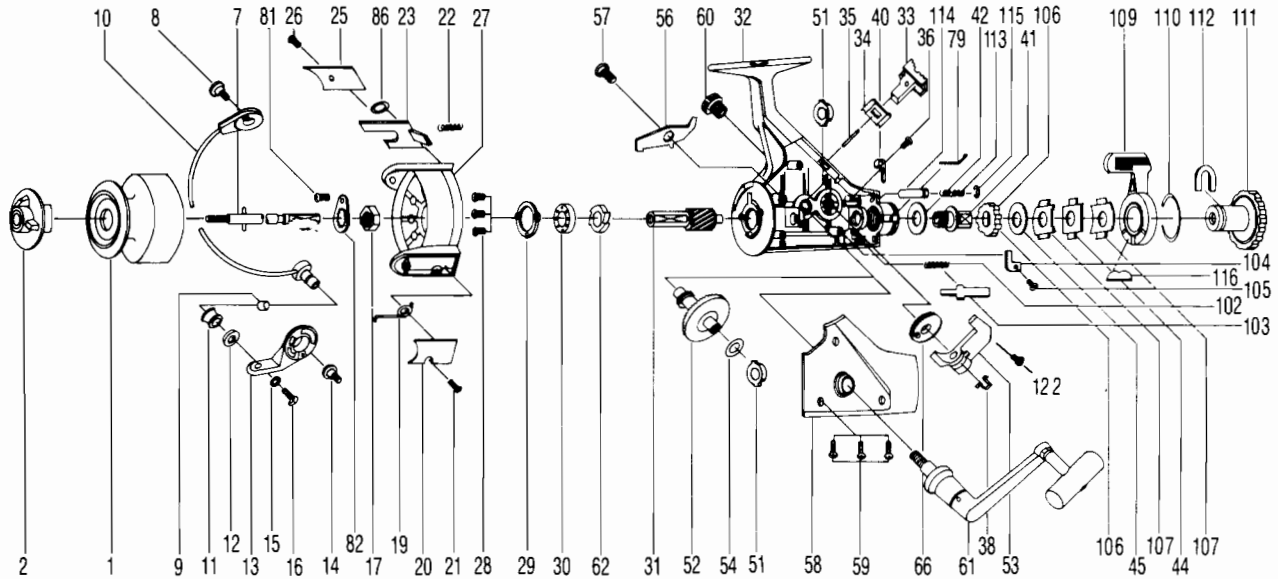


QUANTUM® QMD45



KEY PART

NO. NO.	DESCRIPTION
1 ZQ321	SPOOL ASSY
2 ZQ050	DRAG KNOB ASSY
7 ZQ315	MAIN SHAFT ASSY
8 SS048	BAIL HOLDER SCREW
9 SS016	LINE ROLLER BUSHING
10 SS347	BAIL ARM ASSY
11 SS004	LINE ROLLER
12 SS017	BAIL COLLAR
13 SS007	ARM LEVER
14 SS051	ARM LEVER SCREW
15 NB102	BAIL AXLE WASHER
16 RS108	BAIL SCREW
17 NB006	ROTOR NUT
19 SS022	BAIL SPRING
20 ZQ087	BAIL SPRING COVER
21 RS085	BAIL SPR. CVR. SCR.
22 SS049	KICK LEVER SPRING
23 SS019	KICK LEVER
25 SS024	KICK LEVER COVER
26 RS037	KICK LVR. CVR. SCR.
27 SS009	ROTOR
28 RS080	BEARING PLATE SCREW
29 SS040	BEARING PLATE
30 SS028	BALL BEARING
31 ZQ011	PINION GEAR
32 ZQ301	BODY ASSY
33 SS059	ANTI-REVERSE LEVER
34 SS090	A/R LEVER PLATE
35 NB091	A/R LEVER PIN
36 RS067	CLICK CLAW SCREW
38 SS083	OSC. SLDR. STOPPER
40 SS068	CLICK CLAW
41 SS104	SLIDER HOLDER
42 SS046	DRAG WASHER "C"

KEY PART

NO. NO.	DESCRIPTION
44 SS030	DRAG WASHER "A"
45 SS039	DRAG WASHER "B"
51 RS013	BODY/BODY COVER BUSH
52 ZQ012	DRIVE GEAR
53 SS025	OSCILLATING SLIDER
54 RS026	DRIVE GEAR ADJ. WASH
56 SS063	ANTI-REVERSE CLAW
57 SS089	A/R CLAW SCREW
58 ZQ323	BODY COVER ASSY
59 RS057	BODY COVER SCREW
60 YQ073	HANDLE SCREW CAP
61 ZQ318	HANDLE ASSY
62 SS060	RATCHET GEAR
64 NB086	SLIDER SPRING
66 ZQ053	OSCILLATING GEAR
79 RS005	BACK CLAW
81 SS058	ROTOR NUT LOCK SCREW
82 SS088	ROTOR NUT LOCK
102 SS142	M/SHAFT STP. SPR.
103 SS143	M/SHAFT STOPPER
104 SS144	STOPPER PLATE
105 RS145	STOPPER PLATE SCR.
106 SS146	SLIDER HOLDER RAT.
107 SS147	DRAG SPR. WASH "A"
109 ZQ148	BAIL CLICK ACTUATOR
110 SS149	BAIT DRAG RING
111 ZQ150	BAIL CLICK DRAG KN
112 SS151	BT/CLK DRAG KN RET
113 SS152	BT/LCK SHAFT SPR.
114 SS153	BT/CLK LCK SH SPR
115 SS154	E CLIP
116 SS155	BAIT INSERT
122 RS161	O/S STOPPER SCREW

WWW.REELDR.COM

Prices subject to change without notice. Prices do not include postage and handling.

PLEASE ORDER BY PART NUMBER

Rev. 9/88

Zebco Division Brunswick Corporation, Box 270, Tulsa, OK 74101 USA 918-836-5581

