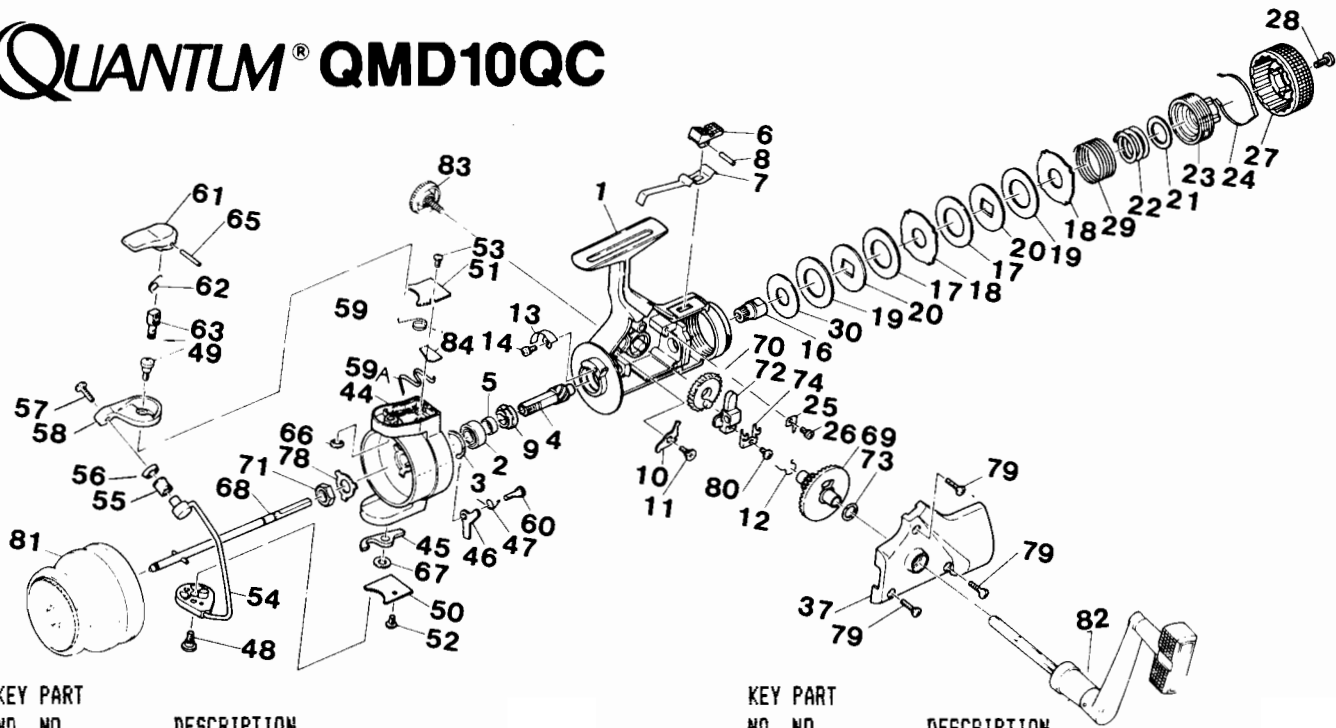


QUANTUM® QMD10QC



**KEY PART
NO. NO.**

NO. NO.	DESCRIPTION
1 Q41001	BODY ASSY D10
2 Q31002	ROTOR BEARING
3 Q00401	BEARING RETAINER
4 Q31004	PINION GEAR
5 Q31005	PINION SLEEVE
6 Q31006	ANTI-REV SWITCH KNOB
7 Q41007	ANTI-REV LEVER SPRING
8 Q00308	SWITCH KNOB RETAN.PIN
9 Q31010A	ANTI-REV. RATCHET
10 Q31011	ANTI-REVERSE PAWL
11 Q31012	ANTI-REV. PAWL SCREW
12 Q31013	SILENT ANTI-REV SPRING
13 Q21015	ROTOR BRAKE
14 Q00108	SCREW
16 Q31101	DRAG SHAFT
17 Q41102	FIBER DRAG WASHER
18 Q41104	EARED DRAG WASHER
19 Q41105	TEFLON DRAG WASHER
20 Q41106	SHAFT DRAG WASHER
21 Q41108	DRAG SPRING WASHER
22 Q41109	MAIN DRAG SPRING
23 Q41110	DRAG SCREW
24 Q41112	DRAG KNOB RETAINER
25 Q11115	CLICK PAWL
26 Q00108	SCREW
27 Q41117	DRAG KNOB
28 Q00123	DRAG KNOB SCREW
29 Q41118	DRAG RETAINER SPRING
30 Q41119	FRONT DRAG WASHER
37 Q43001	SIDE PLATE
44 Q45001A	ROTOR
45 Q45003	BAIL TRIP LEVER A
46 Q45004	BAIL TRIP LEVER B
47 Q75005	TRIP LEVER SPRING

**KEY PART
NO. NO.**

NO. NO.	DESCRIPTION
48 Q15006	BAIL BRACKET SCR
49 Q35007	BAIL BRACKET SCREW
50 Q45010	ROTOR COVER A
51 Q45011	ROTOR COVER B
52 Q00105	ROTOR CVR OSC. SCREW A
53 Q00117	ROTOR COVER SCREW B
54 Q45012A	BAIL ASSY
55 Q35014	LINE ROLLER
56 Q35015	LINE ROLLER BUSHING
57 Q00104	LINE ROLLER SCREW
58 Q45016A	BAIL HINGE
59A Q45017A	BAIL TENSION SPR
60 Q75018	TRIP LEVER B SCREW
61 Q45023A	TRIGGER
62 Q45024A	TRIGGER SPRING
63 Q35025A	TRIGGER SHAFT
64 Q35026A	BAIL HINGE SLEEVE
65 Q30307A	TRIGGER PIN
66 Q00601A	TRIGGER SHAFT RETAINER
67 Q35027	TRIP LEVER A WASHER
68 Q47001	CENTER SHAFT ASSY
69 Q38001	CRANK GEAR
70 Q48002	OSCILLATOR GEAR
71 Q38005	ROTOR NUT
72 Q38006	OSCILLATOR SLIDE BLOCK
73 Q38009	ROTOR/CRANK GEAR WSHR
74 Q38014	OSC BLOCK RETAINER
75 Q38016	ROTOR NUT WASHER
79 Q01113	SIDE PLATE SCREW
80 Q00105	ROTOR CVR OSC. SCREW A
81 Q44000	SPOOL ASSY QMD10
82 Q42000	HANDLE ASSY
83 Q38000	HANDLE SCREW ASSY
84 Q4505WA	SPACER PLATE WASHER

WWW.REELDR.COM

Prices subject to change without notice. Prices do not include postage and handling.

PLEASE ORDER BY PART NUMBER

Rev. 9/88

Zebco Division Brunswick Corporation, Box 270, Tulsa, OK 74101 USA 918-836-5581

