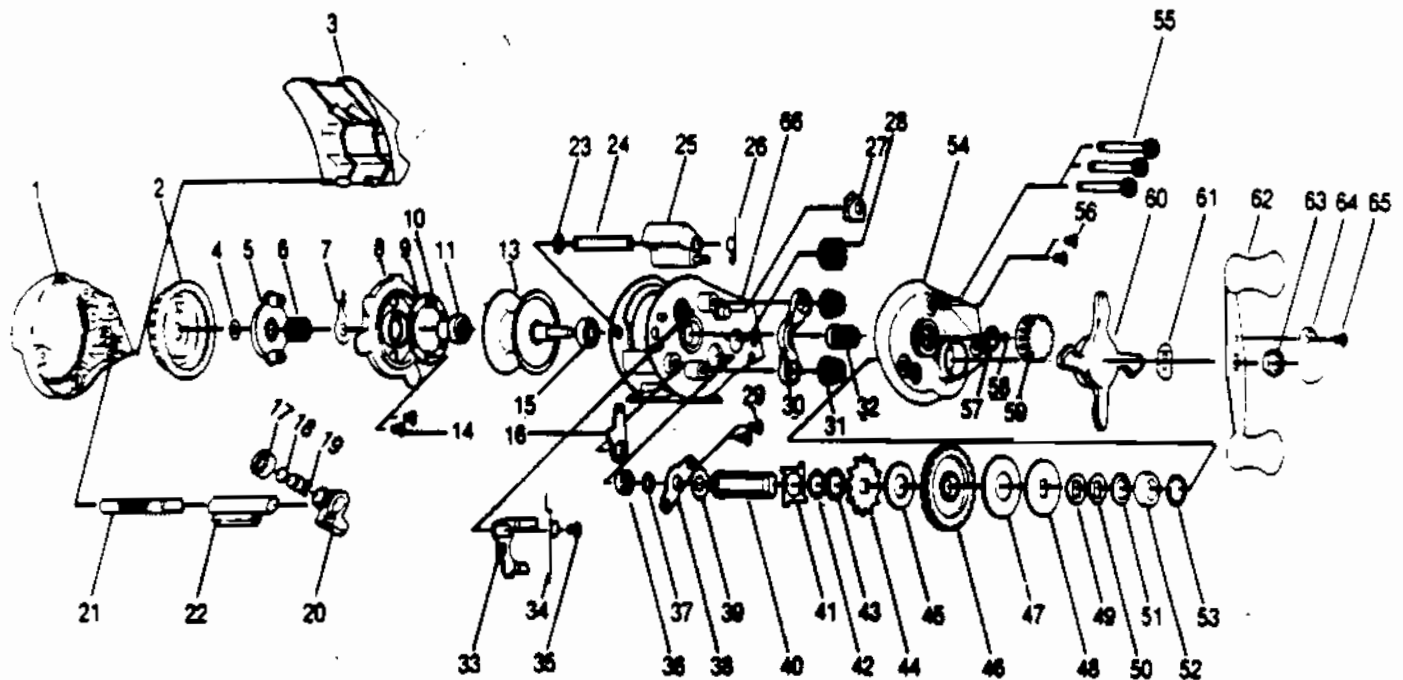


QUANTUM QL550



Key No.	Part No.	Description
1	WW023-3	LEFT SIDE COVER
2	WW026	MAGNET CONTROL DIAL
3	WW027-3	HOOD
4	NX105	DIAL FRICTION RING
5	WW028	SLIDE CAM
6	NX071	SLIDE CAM SPRING
7	WW108	CLICKER
8	WW051	SPOOL COVER
9	WW330	MAGNET PLATE ASSEMBLY
10	WW082	SPOOL TENSION SHIM
11	WW017	SPOOL SHAFT BUSHING
13	WW321	SPOOL ASSEMBLY
14	QW076	SCREW
15	WW017	SPOOL SHAFT BUSHING
16	WW084	LINK
17	QW007	LINE GUIDE CARRIER SCREW
18	QW035	CRANK SHAFT WASHER
19	WW006	LINE GUIDE PAWL
20	WW347	LINE GUIDE CARRIER
21	WW072	WORM SHAFT
22	WW016	WORM SHAFT GUIDE
23	QW120	E-RING
24	WW050	THUMB BAR PIN
25	WW309	THUMB BAR ASSEMBLY
26	WW022	THUMB BAR SPRING
27	WW363	A/R PAWL ASSEMBLY
28	WW085	LEVEL WIND GEAR
29	WW107	SCREW
30	WW025	PINION YOKE
31	WW040	SPRING YOKE
32	WW311	PINION ASSEMBLY
33	WW039	RELEASE SLIDER

WWW.REELDR.COM

Key No.	Part No.	Description
34	WW109	SPRING-RELEASE SLIDER
35	WW076	SCREW-RELEASE SLIDER
36	WW103	CRANK SHAFT BUSHING
37	QW120	E-RING
38	WW002	RETAINER-CRANK SHAFT
39	WW104	WASHER-CRANK SHAFT
40	WW008	CRANK SHAFT
41	GW083	TRIP RATCHET
42	WW105	WASHER-TRIP RATCHET
43	WW111	WASHER-RATCHET
44	WW091	A/R RATCHET
45	WW110	WASHER-DRIVE GEAR
46	WW012	DRIVE GEAR
47	WW059	DRAG DISC
48	WW045	WASHER-DRAG
49	QW048	SPRING WASHER D
50	QW046	SPRING WASHER D
52	WW058	BEARING
54	WW024-3	RIGHT SIDE COVER
55	WW374	THUMB SCREW
56	QW050	THUMB REST SCREW
57	WW101	TENSION KNOB O-RING
58	WW032	WASHER-TENSION KNOB
59	WW033	TENSION KNOB
60	WW055	DRAG STAR
61	NX054	WASHER-HANDLE
62	WW318	HANDLE ASSEMBLY
63	QW003	HANDLE NUT
64	QW034	HANDLE NUT CAP
65	QW123	HANDLE NUT CAP SCREW
66	WW001	FRAME

Prices subject to change without notice. Prices do not include postage and handling.

PLEASE ORDER BY PART NUMBER

Rev. 5/93

Zebco Division Brunswick Corporation, Box 270, Tulsa, OK 74101 USA 918-836-5581

