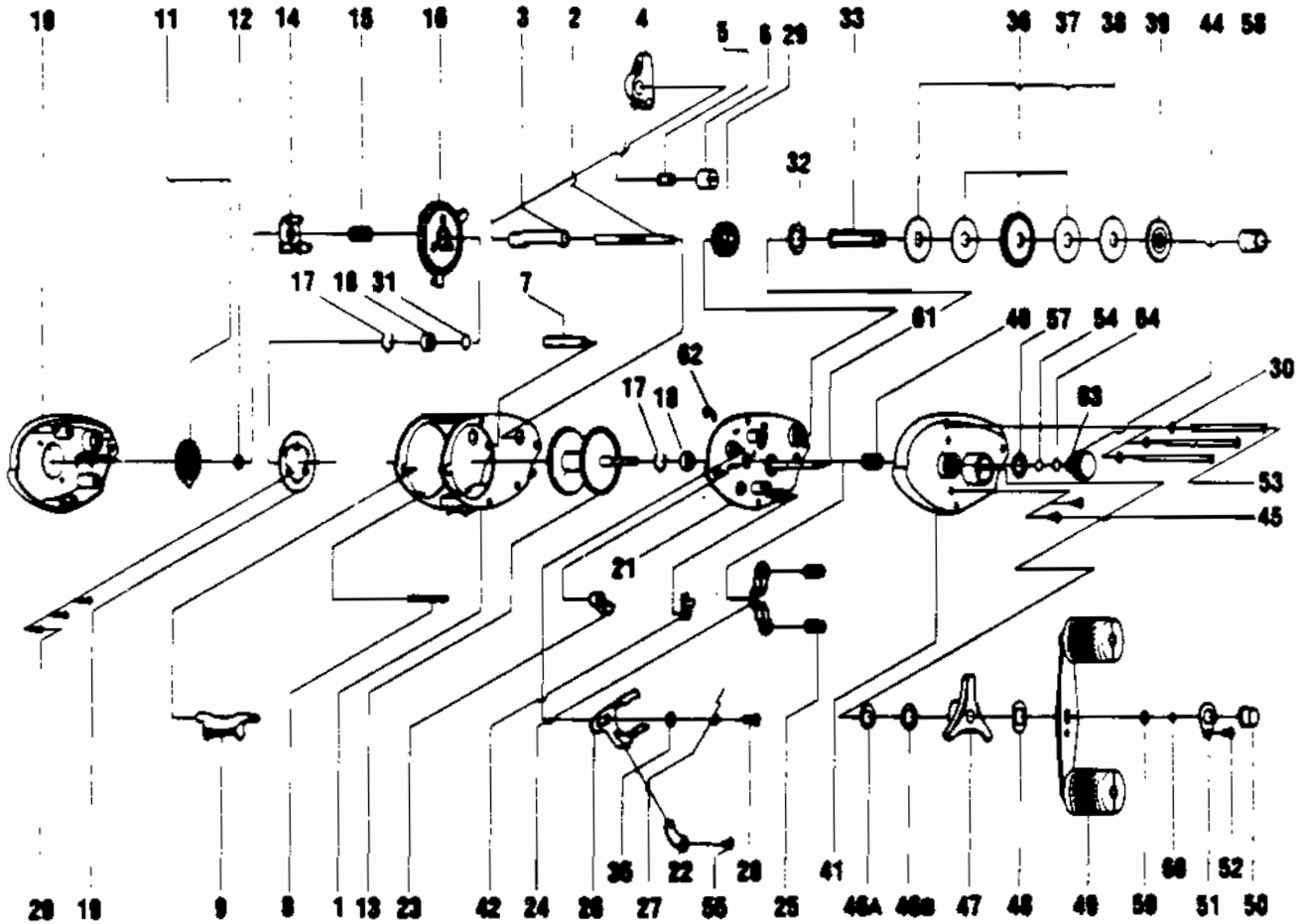


# QUANTUM QL500



Key No.	Part No.	Description
1	JW001	FRAME
2	JW072	WORM SHAFT
3	NW016	WORM SHAFT GUARD
4	JW347	LINE GUARD
5	JW006	LINE GUIDE PAWL
6	JW007	LINE GUIDE PAWL SCREW
7	NW061	STABILIZER BAR
8	JW094	FRAME FIXED PIN
9	NW009	THUMB BAR
10	NW323	LEFT SIDE COVER ASSY.
11	NW026	CONTROL DIAL
12	NW101	O-RING CAST CONTROL
13	JW321	SPOOL ASSY.
14	JW028	SLIDE CAM
15	JW071	SLIDE CAM SPRING
16	JW351	SPOOL COVER
17	NW080	BEARING RETAINER
18	NW017	SPOOL BEARING
19	NW330	MAGNET PLATE ASSY.
20	JW076	MAGNET PLATE SCREW
21	NW310	SET PLATE ASSY.
22	JW036	LINK
23	JW050	THUMB BAR CAM
24	JW024	RIGHT SIDE COVER
25	JW040	PINION YOKE SPRING
26	JW039	RELEASE SLIDER
27	JW102	TRIP SPRING
28	JW057	RELEASE SLIDER SCREW
29	JW085	LEVEL WIND GEAR
30	GX109	WASHER-THUMB SCREW

WWW.REELDR.COM

Key No.	Part No.	Description
32	NW083	TRIP RATCHET
33	JW008	DRIVE SHAFT
36	NW012	DRIVE GEAR
37	JW059	DRAG DISC
38	JW045	DRAG WASHER
39	JW091	ANTI-REVERSE RATCHET
40	NW311	PINION GEAR ASSY.
41	NW024	RIGHT SIDE COVER
42	JW363	ANTI-REVERSE PAWL
44	JW333	CAST CONTROL CAP ASSY
45	GX4352	RIGHT SIDE CVR SCR
46	JW046A	THICK WAVE WASHER
46	JW046B	THIN WAVE WASHER
47	NW355	DRAG KNOB ASSY.
48	GX4660	HANDLE WASHER
49	JW319	HANDLE ASSY.
50	GX4702	HANDLE NUT
51	GX4703	HANDLE NUT LOCK
52	GX4704	HANDLE NUT LOCK SCR
53	NW374	THUMB SCREW
54	JW032	SPOOL TENSION KNOB
55	JW100	LINK SCREW
57	JW105	TENSION KNOB O-RING
58	JW058	CRANK SHAFT BUSHING
59	JW064	SHIM CRANKSHAFT
60	GX4657	CRANK SHAFT E-CLIP
61	JW002	SET PLATE SHAFT
62	GX4665	SHAFT CLIP-E
63	JW082	CAST CONTROL CUSHION
64	JW038	SPOOL TN. KN. WSHR.-SQ.

Prices subject to change without notice. Prices do not include postage and handling.

**PLEASE ORDER BY PART NUMBER**

Rev. 5/93

Zebco Division Brunswick Corporation, Box 270, Tulsa, OK 74101 USA 918-836-5581

