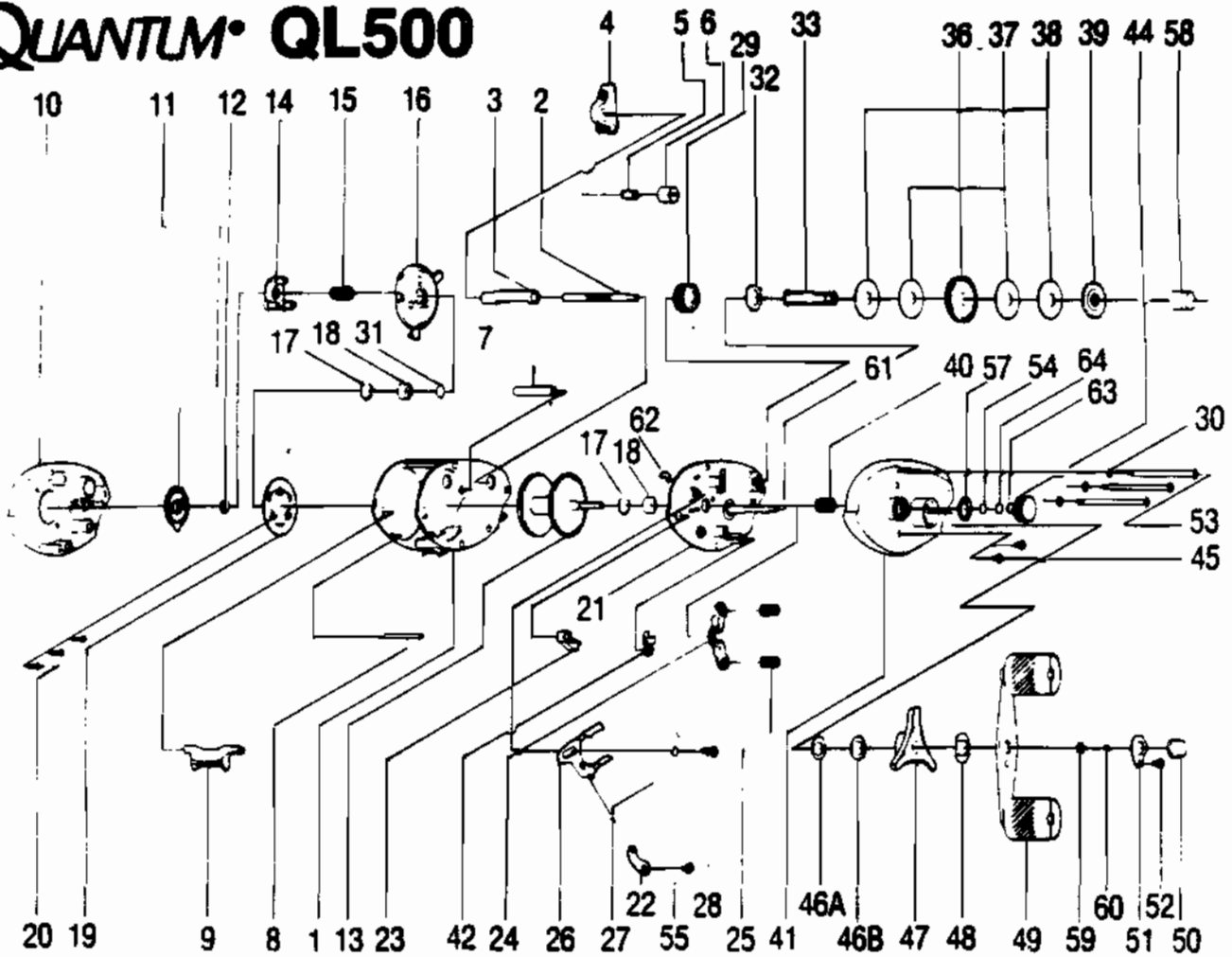


QUANTUM QL500



KEY PART NO. NO.

KEY PART NO. NO.	DESCRIPTION
1 JW001	FRAME
2 JW072	WORM SHAFT
3 NW016	WORM SHAFT GUARD
4 JW347	LINE GUARD
5 JW006	LINE GUIDE PAWL
6 JW007	LINE GUIDE PAWL SCREW
7 NW061	STABILIZER BAR
8 JW094	FRAME FIXED PIN
9 NW009	THUMB BAR
10 NW323	LEFT SIDE COVER ASSY.
11 NW026	CONTROL DIAL
12 NW101	O-RING CAST CONTROL
13 JW321	SPOOL ASSY.
14 JW028	SLIDE CAM
15 JW071	SLIDE CAM SPRING
16 JW351	SPOOL COVER
17 NW080	BEARING RETAINER
18 NW017	SPOOL BEARING
19 NW330	MAGNET PLATE ASSY.
20 JW076	MAGNET PLATE SCREW
21 NW310	MAGNET PLATE ASSY.
22 JW036	LINK
23 JW050	THUMB BAR CAM
24 JW024	RIGHT SIDE COVER
25 JW040	PINION YOKE SPRING
26 JW039	RELEASE SLIDER
27 JW102	TRIP SPRING
28 JW097	RELEASE SLIDER SCREW
29 JW085	LEVEL WIND GEAR
30 GX109	WASHER-THUMB SCREW

KEY PART NO. NO.

KEY PART NO. NO.	DESCRIPTION
32 NW083	TRIP RATCHET
33 JW008	DRIVE SHAFT
36 NW012	DRIVE GEAR
37 JW059	DRAG DISC
38 JW045	DRAG WASHER
39 JW091	ANTI-REVERSE RATCHET
40 NW311	PINION GEAR ASSY.
41 NW026	RIGHT SIDE COVER
42 JW363	ANTI-REVERSE PAWL
44 JW333	CAST CONTROL CAP ASSY.
45 GX4352	RIGHT SIDE CVR SCR
46 JW046A	THICK WAVE WASHER
46 JW046B	THIN WAVE WASHER
47 WJ355	DRAG KNOB ASSY.
48 GX4660	HANDLE WASHER
49 JW318	HANDLE ASSY.
50 GX4702	HANDLE NUT
51 GX4703	HANDLE NUT LOCK
52 GX4704	HANDLE NUT LOCK SCR
53 WJ374	THUMB SCREW
54 JW032	SPOOL TENSION KNOB
55 JW100	LINK SCREW
57 JW105	TENSION KNOB O-RING
58 JW058	CRANK SHAFT BUSHING
59 JW064	SHIM CRANKSHAFT
60 GX4657	CRANK SHAFT E-CLIP
61 JW002	SET PLATE SHAFT
62 GX4665	SHAFT CLIP-E
63 JW082	CAST CONTROL CUSHION
64 JW038	SPOOL TW. KN. WSHR.-SQ.

WWW.REELDR.COM

NOTE: QL500 reels produced prior to 6/90 should use 1511MG Schematic as a reference

Prices subject to change without notice. Prices do not include postage and handling.

PLEASE ORDER BY PART NUMBER

Rev. 11/90

Zebco Division Brunswick Corporation, Box 270, Tulsa, OK 74101 USA 918-636-5581

