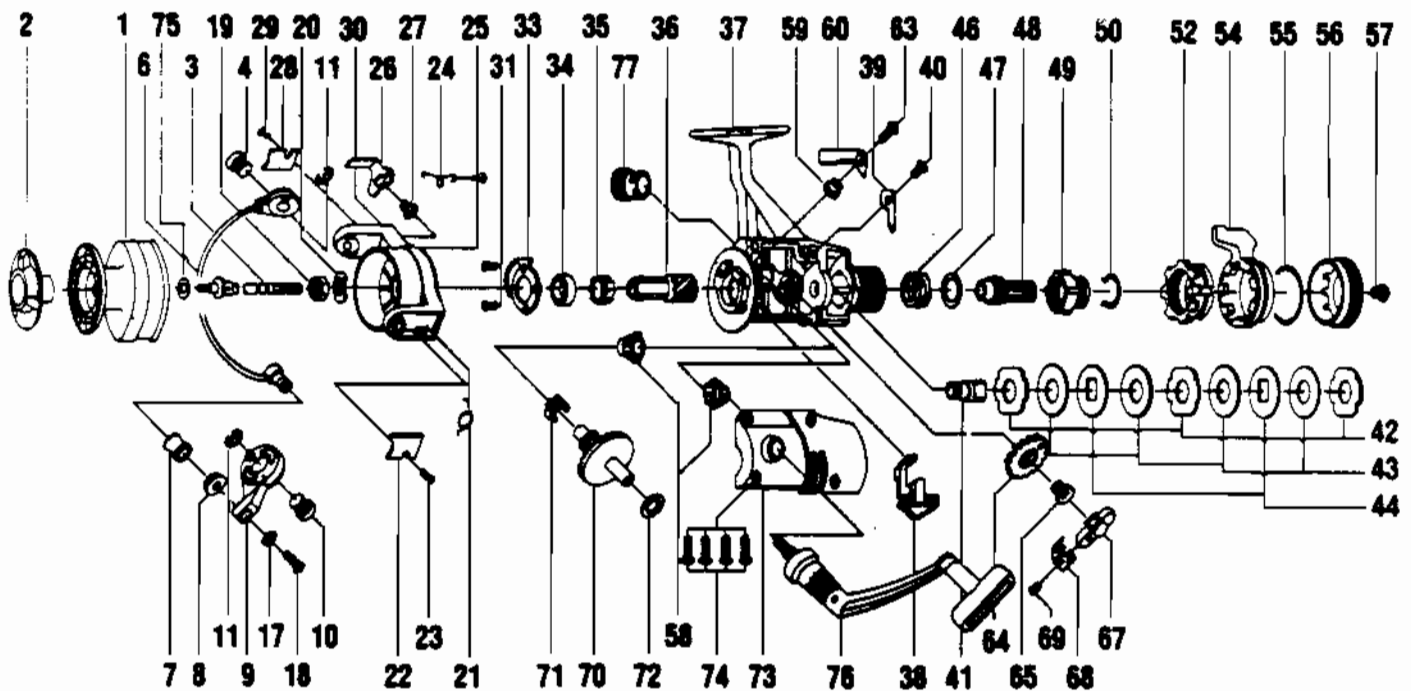


QUANTUM QG70



| Key No. | Part No. | Description | Key No. | Part No. | Description |
|---------|----------|-----------------------|---------|----------|-----------------------|
| 1 | LT321 | SPOOL ASSEMBLY | 42 | FT030 | REAR DRAG WASH. 'A' |
| 2 | LT050 | DRAG KNOB ASSEMBLY | 43 | FT039 | REAR DRAG WASH. 'B' |
| 3 | FT315 | MAIN SHAFT ASSY. | 44 | FT071 | REAR DRAG WASH. 'D' |
| 4 | FT044 | BAIL HOLDER PIN | 46 | FT031 | REAR DRAG COIL SPR. |
| 6 | FT347 | BAIL ARM ASSY. | 47 | FT046 | REAR DRAG ADJ. WSHR. |
| 7 | ZB004 | LINE ROLLER | 48 | FT112 | REAR DRAG NUT |
| 8 | ZB016 | LINE ROLLER BUSH | 49 | FT017 | SLIDING SCREW |
| 9 | FT007 | ARM LEVER | 50 | FT033 | BACK CLICK CLAW |
| 10 | FT043 | ARM LEVER PIN | 52 | LT093 | FIGHTING PULL SCREW |
| 11 | BT002 | E-CLIP | 54 | LT094 | FIGHTING LEVER |
| 17 | FT102 | BAIL WASHER | 55 | LT095 | FIGHTING LVR STOP SPG |
| 18 | ZB108 | BAIL AXLE SCREW | 56 | LT032 | REAR DRAG CAP |
| 19 | NB006 | ROTOR NUT | 57 | DT079 | REAR DRAG CAP SCREW |
| 20 | FT065 | ROTOR RETAINER | 58 | FT013 | BODY CVR. BUSHING |
| 21 | FT022 | BAIL SPRING | 59 | DT014 | A/R CLAW BUSHING |
| 22 | ZB087 | BAIL SPRING COVER | 60 | FT063 | A/R CLAW (N) |
| 23 | BT085 | BAIL SPR. COVER SCREW | 63 | DT089 | A/R CLAW SCREW |
| 24 | ZB049 | TRIP LEVER SPRING | 64 | FT053 | OSCILLATING GEAR |
| 25 | DT058 | KICK LEVER SPR. SCR. | 65 | FT078 | OSCILLATING GEAR SCR |
| 26 | FT019 | KICK LEVER | 67 | ZB025 | OSCILLATOR SLIDER |
| 27 | ZB037 | TRIP LEVER SCREW | 68 | ZB083 | STOPPER |
| 28 | ZB024 | TRIP LEVER COVER | 69 | NB084 | STOPPER SCREW |
| 29 | BT085 | BAIL SPR. COVER SCREW | 70 | FT012 | DRIVE GEAR |
| 30 | FT009 | ROTOR ASSY | 71 | ZB086 | SLIDER SPRING |
| 31 | BT080 | BEARING PLATE SCREW | 72 | ZB026 | CRANK GEAR SHIM |
| 33 | ZB040 | BEARING RETAINER | 73 | LT323 | BODY COVER ASSEMBLY |
| 34 | ZB028 | BALL BEARING | 74 | FT057 | BODY COVER SCREW |
| 35 | ZB060 | ANTI-REV RATCHET | 75 | FT056 | SPOOL ADJ. WASHER |
| 36 | FT011 | PINION GEAR | 76 | LT318 | HANDLE ASSEMBLY |
| 37 | LT301 | BODY ASSEMBLY | 77 | HT073 | HANDLE SCREW CAP |
| 38 | FT059 | A/R LEVER | 78 | FT046 | REAR DRAG ADJ. WSHR. |
| 39 | DT068 | CLICK CLAW | 79 | FT120 | ROTOR RET. SPRG. W/S |
| 40 | BT067 | CLICK CLAW SCREW | 80 | LT005 | BACK CLAW (FIGHTING) |
| 41 | FT104 | SLIDER HOLDER | 81 | LT018 | FIGHTING CLICK WASHER |

WWW.REELDR.COM

Prices subject to change without notice. Prices do not include postage and handling.

PLEASE ORDER BY PART NUMBER

Rev. 5/93

Zebco Division Brunswick Corporation, Box 270, Tulsa, OK 74101 USA 918-836-5581

