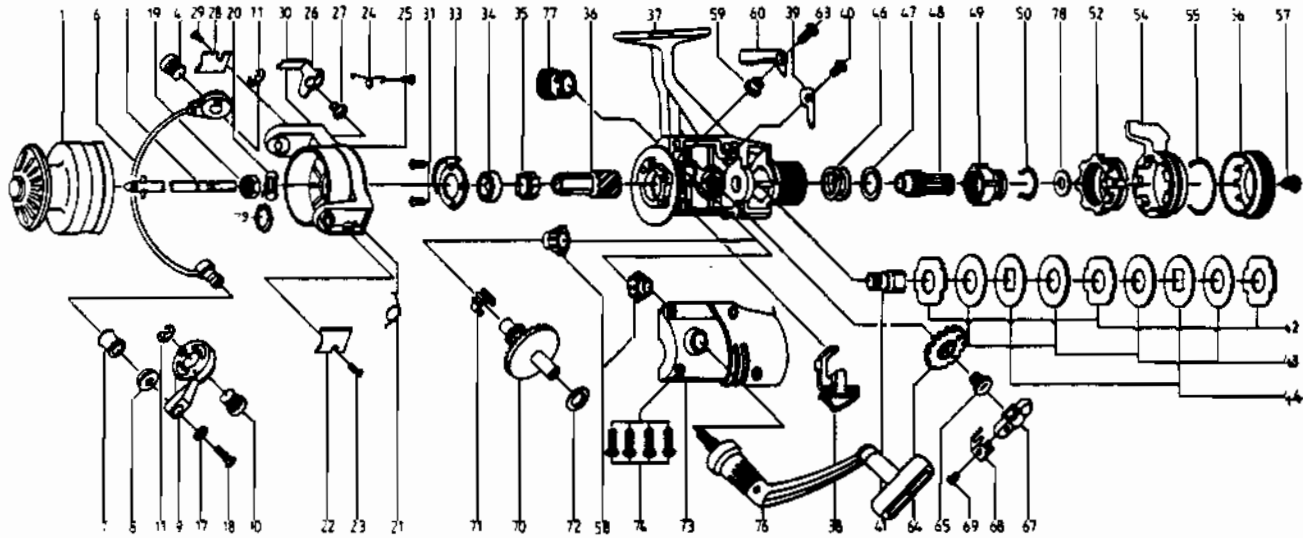


QUANTUM® QG70



KEY PART NO. NO.

KEY PART NO.	DESCRIPTION
1	LT321 SPOOL ASSEMBLY
2	LT050 DRAG KNOB ASSEMBLY
3	FT315 MAIN SHAFT ASSY.
4	FT044 BAIL HOLDER PIN
6	FT347 BAIL ARM ASSY.
7	ZB004 LINE ROLLER
8	ZB016 LINE ROLLER BUSH
9	FT007 ARM LEVER
10	FT043 ARM LEVER PIN
11	BT002 E-CLIP
17	FT102 BAIL WASHER
18	ZB108 BAIL AXLE SCREW
19	NB006 ROTOR NUT
20	FT065 ROTOR RETAINER
21	FT022 BAIL SPRING
22	ZB087 BAIL SPRING COVER
23	BT085 BAIL SPR. COVER SCREW
24	ZB049 TRIP LEVER SPRING
25	DT058 KICK LEVER SPR. SCR.
26	FT019 KICK LEVER
27	ZB037 TRIP LEVER SCREW
28	ZB024 TRIP LEVER COVER
29	BT085 BAIL SPR. COVER SCREW
30	FT009 ROTOR ASSY
31	BT080 BEARING PLATE SCREW
33	ZB040 BEARING RETAINER
34	ZB028 BALL BEARING
35	ZB060 ANTI-REV RATCHET
36	FT011 PINION GEAR
37	LT301 BODY ASSEMBLY
38	FT059 A/R LEVER
39	DT068 CLICK CLAW
40	BT067 CLICK CLAW SCREW
41	FT104 SLIDER HOLDER
42	FT030 REAR DRAG WASH. "A"
43	FT039 REAR DRAG WASH. "B"
44	FT071 REAR DRAG WASH. "D"

KEY PART NO. NO.

KEY PART NO.	DESCRIPTION
46	FT031 REAR DRAG COIL SPR.
47	FT046 REAR DRAG ADJ. WSHR.
48	FT112 REAR DRAG NUT
49	FT017 SLIDING SCREW
50	FT033 BACK CLICK CLAW
52	LT093 FIGHTING FULL SCREW
54	LT094 FIGHTING LEVER
55	LT095 FIGHTING LVR STOP SPG
56	LT032 REAR DRAG CAP
57	DT079 REAR DRAG CAP SCREW
58	FT013 BODY CVR. BUSHING
59	DT014 A/R CLAM BUSHING
60	FT063 A/R CLAM (N)
63	DT089 A/R CLAM SCREW
64	FT053 OSCILLATING GEAR
65	FT078 OSCILLATING GEAR SCR
67	ZB025 OSCILLATOR SLIDER
68	ZB083 STOPPER PS70
69	NB084 STOPPER SCREW
70	FT012 DRIVE GEAR
71	ZB086 SLIDER SPRING
72	ZB026 CRANK GEAR SHIM
73	LT323 BODY COVER ASSEMBLY
74	FT057 BODY COVER SCREW
75	FT056 SPOOL ADJ. WASHER
76	LT316 HANDLE ASSEMBLY
77	HT073 HANDLE SCREW CAP
78	FT046 REAR DRAG ADJ. WSHR.
79	FT120 ROTOR RET. SPRG. W/S
80	LT005 BACK CLAM (FIGHTING)
81	LT018 FIGHTING CLICK WASHER

*Not shown in diagram

Key 80 fits between keys 49, 50

Key 81 fits between keys 52, 54

WWW.REELDR.COM

Prices subject to change without notice. Prices do not include postage and handling.

PLEASE ORDER BY PART NUMBER

Rev. 11/90

Zebco Division Brunswick Corporation, Box 270, Tulsa, OK 74101 USA 918-836-5561