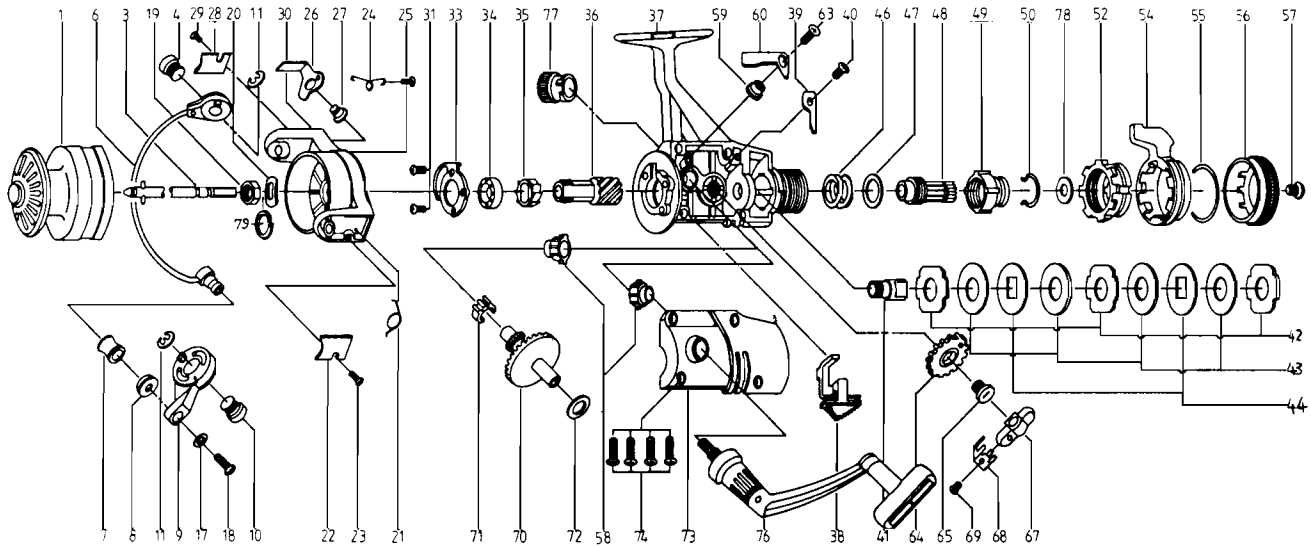


QUANTUM® QG70



**KEY PART
NO. NO.**

1	LT321	SPOOL ASSEMBLY
2	LT050	DRAG KNOB ASSEMBLY
3	FT315	MAIN SHAFT ASSY.
4	FT044	BAIL HOLDER PIN
6	FT347	BAIL ARM ASSY.
7	ZB004	LINE ROLLER
8	ZB016	LINE ROLLER BUSH
9	FT007	ARM LEVER
10	FT043	ARM LEVER PIN
11	BT002	E-CLIP
17	FT102	BAIL WASHER
18	ZB108	BAIL AXLE SCREW
19	NB006	ROTOR NUT
20	FT065	ROTOR RETAINER
21	FT022	BAIL SPRING
22	ZB087	BAIL SPRING COVER
23	BT085	BAIL SPR. COVER SCREW
24	ZB049	TRIP LEVER SPRING
25	DT058	KICK LEVER SPR. SCR.
26	FT019	KICK LEVER
27	ZB037	TRIP LEVER SCREW
28	ZB024	TRIP LEVER COVER
29	BT085	BAIL SPR. COVER SCREW
30	FT009	ROTOR ASSY
31	BT080	BEARING PLATE SCREW
33	ZB040	BEARING RETAINER
34	ZB028	BALL BEARING
35	ZB060	ANTI-REV RATCHET
36	FT011	PINION GEAR
37	LT301	BODY ASSEMBLY
38	FT059	A/R LEVER
39	DT068	CLICK CLAW
40	BT067	CLICK CLAW SCREW
41	FT104	SLIDER HOLDER
42	FT030	REAR DRAG WASH. "A"
43	FT039	REAR DRAG WASH. "B"

**KEY PART
NO. NO.**

44	FT071	REAR DRAG WASH. "D"
46	FT031	REAR DRAG COIL SPR.
47	FT046	REAR DRAG ADJ. WSHR.
48	FT112	REAR DRAG NUT
49	FT017	SLIDING SCREW
50	FT033	BACK CLICK CLAW
52	LT093	FIGHTING PULL SCREW
54	LT094	FIGHTING LEVER
55	LT095	FIGHTING LVR STOP SPG
56	LT032	REAR DRAG CAP
57	DT079	REAR DRAG CAP SCREW
58	FT013	BODY CVR. BUSHING
59	DT014	A/R CLAW BUSHING
60	FT063	A/R CLAW (N)
63	DT089	A/R CLAW SCREW
64	FT053	OSCILLATING GEAR
65	FT078	OSCILLATING GEAR SCR
67	ZB025	OSCILLATOR SLIDER
68	ZB083	STOPPER PS70
69	NB084	STOPPER SCREW
70	FT012	DRIVE GEAR
71	ZB086	SLIDER SPRING
72	ZB026	CRANK GEAR SHIM
73	LT323	BODY COVER ASSEMBLY
74	FT057	BODY COVER SCREW
75	FT056	SPOOL ADJ. WASHER
76	LT318	HANDLE ASSEMBLY
77	HT073	HANDLE SCREW CAP
78	FT046	REAR DRAG ADJ. WSHR.
79	FT120	ROTOR RET. SPRG. W/S
* 80	LT005	BACK CLAW (FIGHTING)
* 81	LT018	FIGHTING CLICK WASHER

**Not shown in diagram*

Key 80 fits between keys 49, 50

Key 81 fits between keys 52, 54

WWW.REELDR.COM

Prices subject to change without notice. Prices do not include postage and handling.

PLEASE ORDER BY PART NUMBER

Rev. 9/88

Zebco Division Brunswick Corporation, Box 270, Tulsa, OK 74101 USA 918-836-5581

