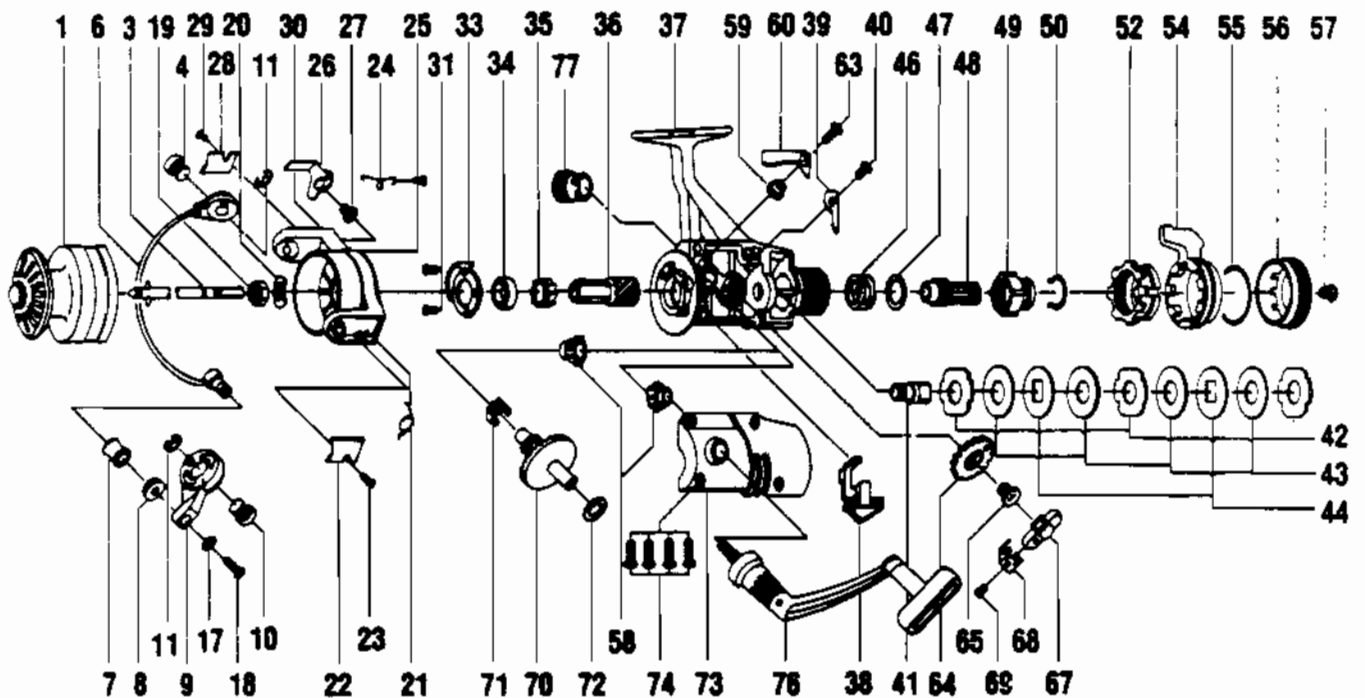


QUANTUM QG50



Key No.	Part No.	Description	Key No.	Part No.	Description
1	KT321	SPOOL ASSEMBLY	42	DT030	REAR DRAG WSHR. 'A'
3	ET315	MAIN SHAFT ASSY.	43	DT039	REAR DRAG WSHR. 'B'
4	DT044	BAIL HOLDER PIN	44	DT071	REAR DRAG WSHR. 'D'
6	ET347	BAIL ARM ASSY.	46	DT031	REAR DRAG COIL SPR.
7	NB004	LINE ROLLER	47	DT046	REAR DRAG ADJ. WSHR.
8	NB016	LINE ROLLER BUSH.	48	DT112	REAR DRAG NUT
9	NB007	BAIL ARM A	49	DT017	SLIDING SCREW
10	ET043	ARM LEVER PIN	50	DT033	BACK CLICK CLAW
11	DT002	E-CLIP	52	JT093	FIGHTING PULL SCREW
17	NB102	BAIL AXLE WASHER	54	JT094	FIGHTING LEVER
18	NB108	BAIL AXLE SCR	55	JT095	FIGHTING LVR STOP SPG
19	NB006	ROTOR NUT	56	JT032	REAR DRAG CAP
20	DT065	ROTOR RETAINER	57	DT079	REAR DRAG CAP SCREW
21	ET022	BAIL SPRING	58	BT013	BODY COVER BUSHING
22	ET087	BAIL SPRING COVER	59	DT014	A/R CLAW BUSHING
23	BT085	BAIL SPR. COVER SCREW	60	DT063	A/R CLAW (N)
24	DT049	KICK LEVER SPRING	63	DT089	A/R CLAW SCREW
25	DT058	KICK LEVER SPR. SCR.	64	NB053	OSCILLATING GEAR
26	ET019	KICK LEVER	65	NB078	OSC. GEAR SCR.
27	ET037	KICK LEVER SCREW	67	NB025	OSCILLATOR SLIDER
28	ET024	KICK LEVER COVER	68	NT083	OSC. SLIDER RETAINER
29	BT085	BAIL SPR. COVER SCREW	69	NB084	STOPPER SCREW
30	ET009	ROTOR ASSY.	70	NB012	CRANK GEAR
31	BT080	BEARING PLATE SCREW	71	NB086	SLIDER SPRING
33	DT040	BEARING PLATE	72	RB026	CRANK GEAR SHIM
34	NT028	BALL BEARING	73	KT323	BODY COVER ASSEMBLY
35	NB060	A/R RATCHET	74	DT057	BODY COVER SCREW
36	DT011	PINION GEAR	76	JT318	HANDLE ASSEMBLY
37	KT301	BODY ASSEMBLY	77	HT073	HANDLE SCREW CAP
38	DT059	ANTI-REVERSE LEVER	78	DT046	REAR DRAG ADJ. WSHR.
39	DT068	CLICK CLAW	79	ET120	ROTOR RET. SPRG. WSHR.
40	BT067	CLICK CLAW SCREW	80	JT005	BACK CLAW (FIGHTING)
41	DT104	SLIDER HOLDER	81	JT018	FIGHTING CLICK WASHER

WWW.REELDR.COM

Prices subject to change without notice. Prices do not include postage and handling.

PLEASE ORDER BY PART NUMBER

Rev. 5/93

Zebco Division Brunswick Corporation, Box 270, Tulsa, OK 74101 USA 918-836-5581

