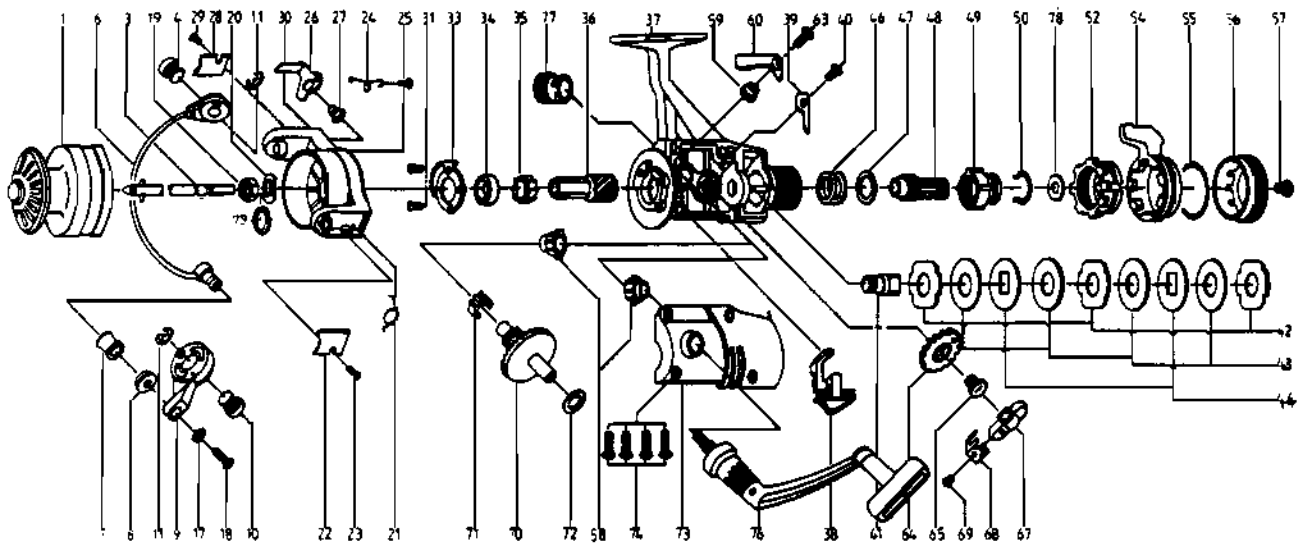


# QUANTUM® QG50



## KEY PART NO. NO.

KEY PART NO. NO.	DESCRIPTION
1	KT321 SPOOL ASSEMBLY
3	ET315 MAIN SHAFT ASSY.
4	DT044 BAIL HOLDER PIN
6	ET347 BAIL ARM ASSY.
7	NB004 LINE ROLLER
8	NB016 LINE ROLLER BUSH.
9	NB007 BAIL ARM A
10	ET043 ARM LEVER PIN
11	DT002 E-CLIP
17	NB102 BAIL AXLE WASHER
18	NB108 BAIL AXLE SCR
19	NB006 ROTOR NUT
20	DT065 ROTOR RETAINER
21	ET022 BAIL SPRING
22	ET087 BAIL SPRING COVER
23	BT085 BAIL SPR. COVER SCREW
24	DT049 KICK LEVER SPRING
25	DT058 KICK LEVER SPR. SCR.
26	ET019 KICK LEVER
27	ET037 KICK LEVER SCREW
29	ET024 KICK LEVER COVER
29	BT085 BAIL SPR. COVER SCREW
30	ET009 ROTOR ASSY.
31	BT080 BEARING PLATE SCREW
33	DT040 BEARING PLATE
34	NT028 BALL BEARING
35	NB060 A/R RATCHET
36	DT011 PINION GEAR
37	KT301 BODY ASSEMBLY
38	DT059 ANTI-REVERSE LEVER
39	DT068 CLICK CLAW
40	BT067 CLICK CLAW SCREW
41	DT104 SLIDER HOLDER
42	DT030 REAR DRAG WSHR. "A"
43	DT039 REAR DRAG WSHR. "B"
44	DT071 REAR DRAG WSHR. "D"
46	DT031 REAR DRAG COIL SPR.
47	DT046 REAR DRAG ADJ. WSHR.
48	DT112 REAR DRAG NUT
49	DT017 SLIDING SCREW
50	DT033 BACK CLICK CLAW

## KEY PART NO. NO.

KEY PART NO. NO.	DESCRIPTION
52	JT093 FIGHTING PULL SCREW
54	JT094 FIGHTING LEVER
55	JT095 FIGHTING LVR STOP SPG
56	JT032 REAR DRAG CAP
57	DT079 REAR DRAG CAP SCREW
58	BT013 BODY COVER BUSHING
59	DT014 A/R CLAW BUSHING
60	DT063 A/R CLAW (N)
63	DT089 A/R CLAW SCREW
64	NB053 OSCILLATING GEAR
65	NB078 OSC. GEAR SCR.
67	NB025 OSCILLATOR SLIDER
68	NT083 OSC. SLIDER RETAINER
69	NB084 STOPPER SCREW
70	NB012 CRANK GEAR
71	NB086 SLIDER SPRING
72	RB026 CRANK GEAR SHIM
73	KT323 BODY COVER ASSEMBLY
74	DT057 BODY COVER SCREW
76	JT318 HANDLE ASSEMBLY
77	KT073 HANDLE SCREW CAP
78	DT046 REAR DRAG ADJ. WSHR.
79	ET120 ROTOR RET. SPRG. WSHR.
* 80	JT005 BACK CLAW (FIGHTING)
* 81	JT018 FIGHTING CLICK WASHER

\*Not shown in diagram

Key 80 fits between keys 49, 50

Key 81 fits between: keys 52, 54

[WWW.REELDR.COM](http://WWW.REELDR.COM)

Prices subject to change without notice. Prices do not include postage and handling.

**PLEASE ORDER BY PART NUMBER**

Rev. 11/90

Zebco Division Brunswick Corporation, Box 270, Tulsa, OK 74101 USA 918-836-5581

