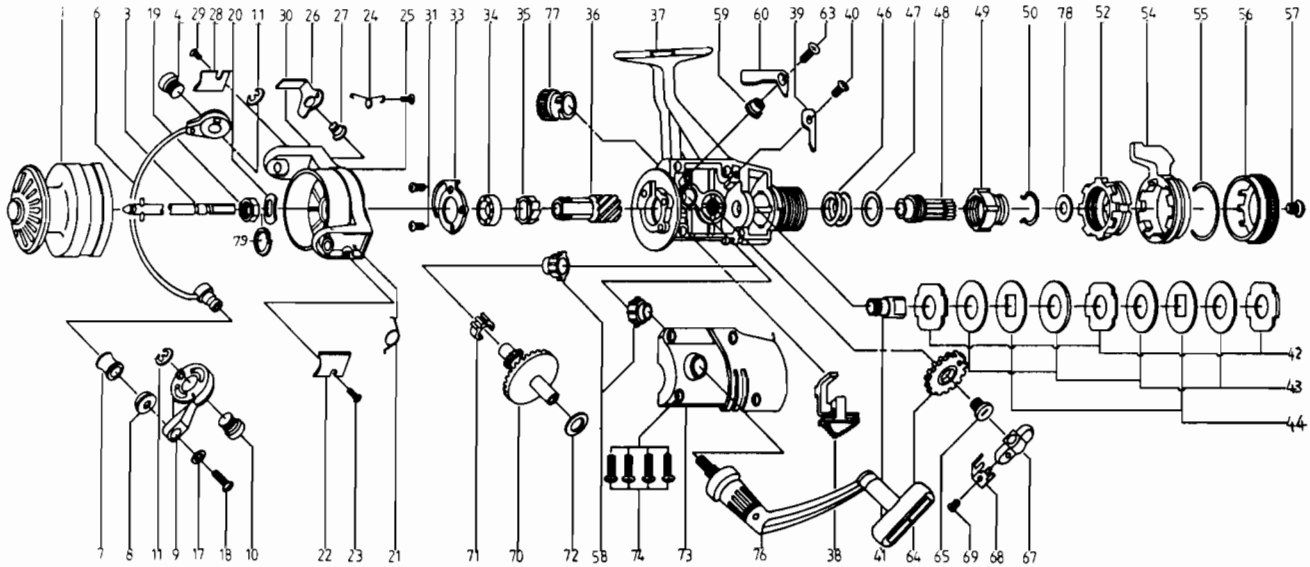


QUANTUM® QG40



**KEY PART
NO. NO.**

NO. NO.	DESCRIPTION
1 JT321	SPOOL ASSEMBLY
3 DT315	MAIN SHAFT ASSY.
4 DT044	BAIL HOLDER PIN
6 DT347	BAIL ARM ASSY.
7 DT004	LINE ROLLER
8 PB016	LN ROLLER BUSH.
9 PB007	BAIL ARM A PS40
10 DT043	ARM LEVER PIN
11 DT002	E-CLIP
17 PB102	BAIL AXLE WASHER
18 PB108	BAIL AXLE SCREW
19 NB006	ROTOR NUT
20 DT065	ROTOR RETAINER
21 DT022	BAIL SPRING
22 PB087	BAIL SPRING COVER
23 BT085	BAIL SPR. COVER SCREW
24 DT049	KICK LEVER SPRING
25 DT058	KICK LEVER SPR. SCR.
26 DT019	KICK LEVER
27 DT037	KICK LEVER SCREW
28 PB024	TRIP LVR. CVR.
29 BT085	BAIL SPR. COVER SCREW
30 DT009	ROTOR ASSY.
31 BT080	BEARING PLATE SCREW
33 DT040	BEARING PLATE
34 NB028	BALL BEARING
35 NB060	A/R RATCHET
36 DT011	PINION GEAR
37 JT301	BODY ASSEMBLY
38 DT059	ANTI-REVERSE LEVER
39 DT068	CLICK CLAW
40 BT067	CLICK CLAW SCREW
41 DT104	SLIDER HOLDER
42 DT030	REAR DRAG WSHR. "A"
43 DT039	REAR DRAG WSHR. "B"

**KEY PART
NO. NO.**

NO. NO.	DESCRIPTION
44 DT071	REAR DRAG WSHR. "D"
46 DT031	REAR DRAG COIL SPR.
47 DT046	REAR DRAG ADJ. WSHR.
48 DT112	REAR DRAG NUT
49 DT017	SLIDING SCREW
50 DT033	BACK CLICK CLAW
52 JT093	FIGHTING PULL SCREW
54 JT094	FIGHTING LEVER
55 JT095	FIGHTING LVR STOP SPG
56 JT032	REAR DRAG CAP
57 DT079	REAR DRAG CAP SCREW
58 BT013	BODY COVER BUSHING
59 DT014	A/R CLAW BUSHING
60 DT063	A/R CLAW (N)
63 DT089	A/R CLAW SCREW
64 NB053	OSCILLATING GEAR
65 NB078	OSC. GEAR SCR.
67 NB025	OSCILLATOR SLIDER
68 NB083	STOPPER
69 NB084	STOPPER SCREW
70 NB012	CRANK GEAR
71 NB086	SLIDER SPRING
72 RB026	CRANK GEAR SHIM
73 JT323	BODY COVER ASSY.
74 DT057	BODY COVER SCREW
76 JT318	HANDLE ASSEMBLY
77 HT073	HANDLE SCREW CAP
78 DT046	REAR DRAG ADJ. WSHR.
79 DT120	ROTOR RET. SPRG. W/S
* 80 JT005	BACK CLAW (FIGHTING)
* 81 JT018	FIGHTING CLICK WASHER

*Not shown in diagram

Key 80 fits between keys 49, 50
Key 81 fits between keys 52, 54

WWW.REELDR.COM

Prices subject to change without notice. Prices do not include postage and handling.

PLEASE ORDER BY PART NUMBER

Rev. 9/88

Zebco Division Brunswick Corporation, Box 270, Tulsa, OK 74101 USA 918-836-5581

