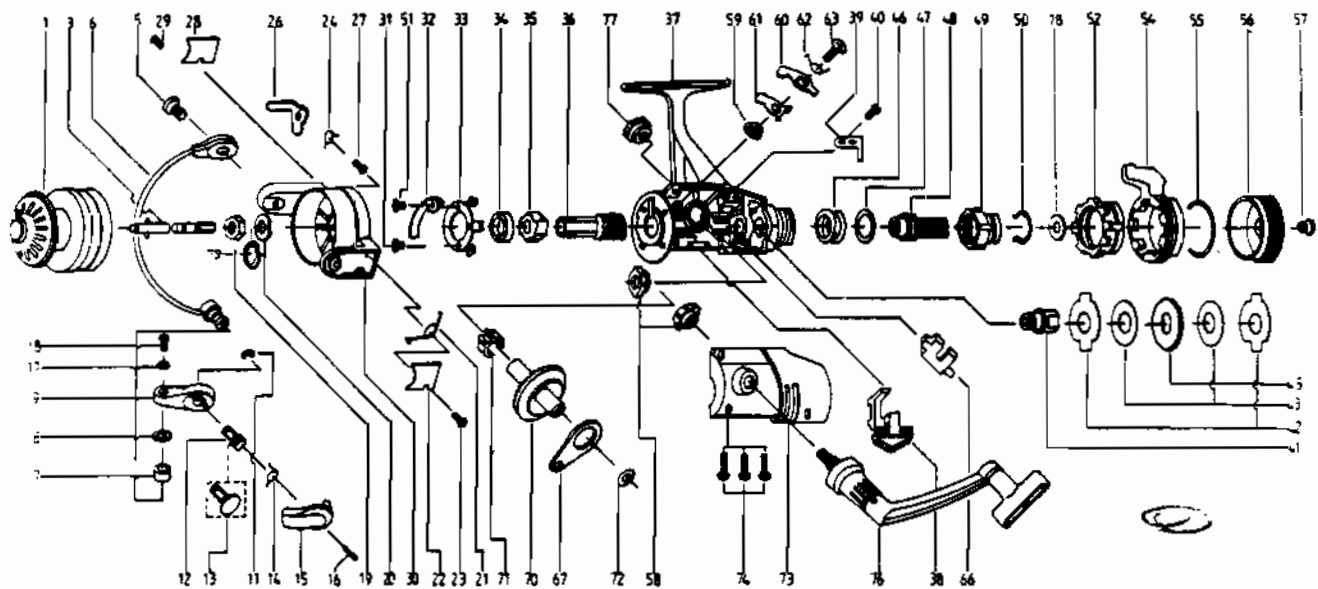


# QUANTUM® QG20



**KEY PART  
NO. NO.**

1	HT321	SPOOL ASSEMBLY
3	CT315	MAIN SHAFT
4	CT044	BAIL HOLDER PIN
6	CT347	BAIL ARM ASSY.
7	NB004	LINE ROLLER
8	NB016	LINE ROLLER BUSH.
9	CT007	ARM LEVER
11	BT002	E-CLIP
12	CT113	TRIGGER HOLDER
13	CT111	ARM LEVER CAP
14	BT114	TRIGGER SPRING
15	BT115	TRIGGER
16	BT116	TRIGGER PIN
17	NB102	BAIL AXLE WASHER
18	NB108	BAIL AXLE SCR
19	VB006	ROTOR NUT
20	BT065	ROTOR RETAINER
21	CT022	BAIL SPRING
22	CT087	BAIL SPRING COVER
23	BT085	BAIL SPR. COVER SCREW
24	CT049	KICK LEVER SPRING
26	CT019	KICK LEVER
27	BT037	KICK LEVER SCREW
28	RB024	TRIP LVR. CVR.
29	BT085	BAIL SPR. COVER SCREW
30	CT009	ROTOR ASSY.
31	BT080	BEARING PLATE SCREW
32	CT082	KICK LEVER GUIDE
33	CT040	BEARING PLATE
34	RB026	BALL BEARING
35	BT060	RATCHET GEAR
36	CT011	PINION GEAR
37	HT301	BODY ASSEMBLY
38	CT059	ANTI-REVERSE LEVER
39	CT068	CLICK CLAW
40	BT067	CLICK CLAW SCREW

**KEY PART  
NO. NO.**

41	CT104	SLIDER HOLDER
42	CT030	REAR DRAG WSHR "A"
43	CT039	REAR DRAG WASHER "B"
44	CT071	REAR DRAG WASHER "D"
46	CT031	REAR DRAG COIL SPR.
47	CT046	REAR DRAG ADJ. WSHR.
48	CT112	REAR DRAG NUT
49	CT017	SLIDING SCREW
50	CT033	BACK CLICK CLAW
51	BT182	KICK LEVER GUIDE SCR
52	HT093	FIGHTING FULL SCR.
54	HT094	FIGHTING LEVER
55	HT095	FT. LVR. STOP. RING
56	HT032	REAR DRAG CAP
57	VB079	DRAG SCREW
58	BT013	BODY COVER BUSHING
59	BT014	A/R CLAW BUSHING
60	CT063	A/R CLAW (N)
61	CT064	A/R CLAW (S)
62	CT061	A/R CLAW SPRING
63	BT089	A/R CLAW SCREW
66	BT081	PIN SLIDER
67	BT025	OSCILLATING SLIDER
70	CT012	DRIVE GEAR
71	BT086	SLIDING SPRING
72	RB026	CRANK GEAR SHIM
73	HT323	BODY COVER ASSY.
74	BT057	BODY COVER SCREW
76	HT318	HANDLE ASSEMBLY
77	HT073	HANDLE SCREW CAP
78	CT046	REAR DRAG ADJ. WSHR.
79	CT120	ROTOR RET. SPRG. W/S
* 80	HT005	BACK CLAW (FIGHTING)
* 81	HT018	FIGHTING CLICK WASHER

\* Not shown in diagram

Key 80 fits between keys 49, 50

Key 81 fits between keys 52, 54

[WWW.REELDR.COM](http://WWW.REELDR.COM)

Prices subject to change without notice. Prices do not include postage and handling.

**PLEASE ORDER BY PART NUMBER**

Rev. 11/90

Zebco Division Brunswick Corporation, Box 270, Tulsa, OK 74101 USA 918-836-5581

