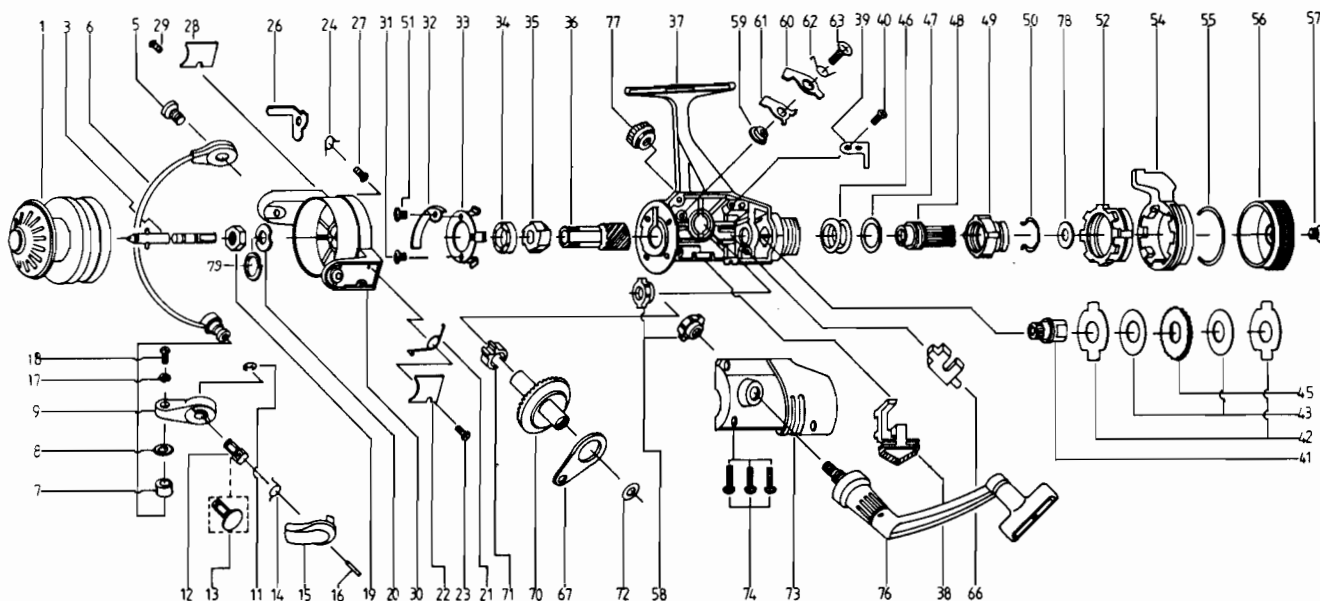


QUANTUM® QG20



**KEY PART
NO. NO.**

NO. NO.	DESCRIPTION
1 HT321	SPOOL ASSEMBLY
3 CT315	MAIN SHAFT
4 CT044	BAIL HOLDER PIN
6 CT347	BAIL ARM ASSY.
7 NB004	LINE ROLLER
8 NB016	LINE ROLLER BUSH.
9 CT007	ARM LEVER
11 BT002	E-CLIP
12 CT113	TRIGGER HOLDER
13 CT111	ARM LEVER CAP
14 BT114	TRIGGER SPRING
15 BT115	TRIGGER
16 BT116	TRIGGER PIN
17 NB102	BAIL AXLE WASHER
18 NB108	BAIL AXLE SCR
19 VB006	ROTOR NUT
20 BT065	ROTOR RETAINER
21 CT022	BAIL SPRING
22 CT087	BAIL SPRING COVER
23 BT085	BAIL SPR. COVER SCREW
24 CT049	KICK LEVER SPRING
26 CT019	KICK LEVER
27 BT037	KICK LEVER SCREW
28 RB024	TRIP LVR. CVR.
29 BT085	BAIL SPR. COVER SCREW
30 CT009	ROTOR ASSY.
31 BT080	BEARING PLATE SCREW
32 CT082	KICK LEVER GUIDE
33 CT040	BEARING PLATE
34 RB028	BALL BEARING
35 BT060	RATCHET GEAR
36 CT011	PINION GEAR
37 HT301	BODY ASSEMBLY
38 CT059	ANTI-REVERSE LEVER
39 CT068	CLICK CLAW
40 BT067	CLICK CLAW SCREW

**KEY PART
NO. NO.**

NO. NO.	DESCRIPTION
41 CT104	SLIDER HOLDER
42 CT030	REAR DRAG WSHR "A"
43 CT039	REAR DRAG WASHER "B"
44 CT071	REAR DRAG WASHER "D"
46 CT031	REAR DRAG COIL SPR.
47 CT046	REAR DRAG ADJ. WSHR.
48 CT112	REAR DRAG NUT
49 CT017	SLIDING SCREW
50 CT033	BACK CLICK CLAW
51 BT182	KICK LEVER GUIDE SCR
52 HT093	FIGHTING PULL SCR.
54 HT094	FIGHTING LEVER
55 HT095	FT. LVR. STOP. RING
56 HT032	REAR DRAG CAP
57 VB079	DRAG SCREW
58 BT013	BODY COVER BUSHING
59 BT014	A/R CLAW BUSHING
60 CT063	A/R CLAW (N)
61 CT064	A/R CLAW (S)
62 CT061	A/R CLAW SPRING
63 BT089	A/R CLAW SCREW
66 BT081	PIN SLIDER
67 BT025	OSCILLATING SLIDER
70 CT012	DRIVE GEAR
71 BT086	SLIDING SPRING
72 RB026	CRANK GEAR SHIM
73 HT323	BODY COVER ASSY.
74 BT057	BODY COVER SCREW
76 HT318	HANDLE ASSEMBLY
77 HT073	HANDLE SCREW CAP
78 CT046	REAR DRAG ADJ. WSHR.
79 CT120	ROTOR RET. SPRG. W/S
* 80 HT005	BACK CLAW (FIGHTING)
* 81 HT018	FIGHTING CLICK WASHER

*Not shown in diagram

Key 81 fits between keys 52, 54 Key 80 fits between keys 49, 50

WWW.REELDR.COM

Prices subject to change without notice. Prices do not include postage and handling.

PLEASE ORDER BY PART NUMBER

Rev. 9/88

Zebco Division Brunswick Corporation, Box 270, Tulsa, OK 74101 USA 918-836-5581

