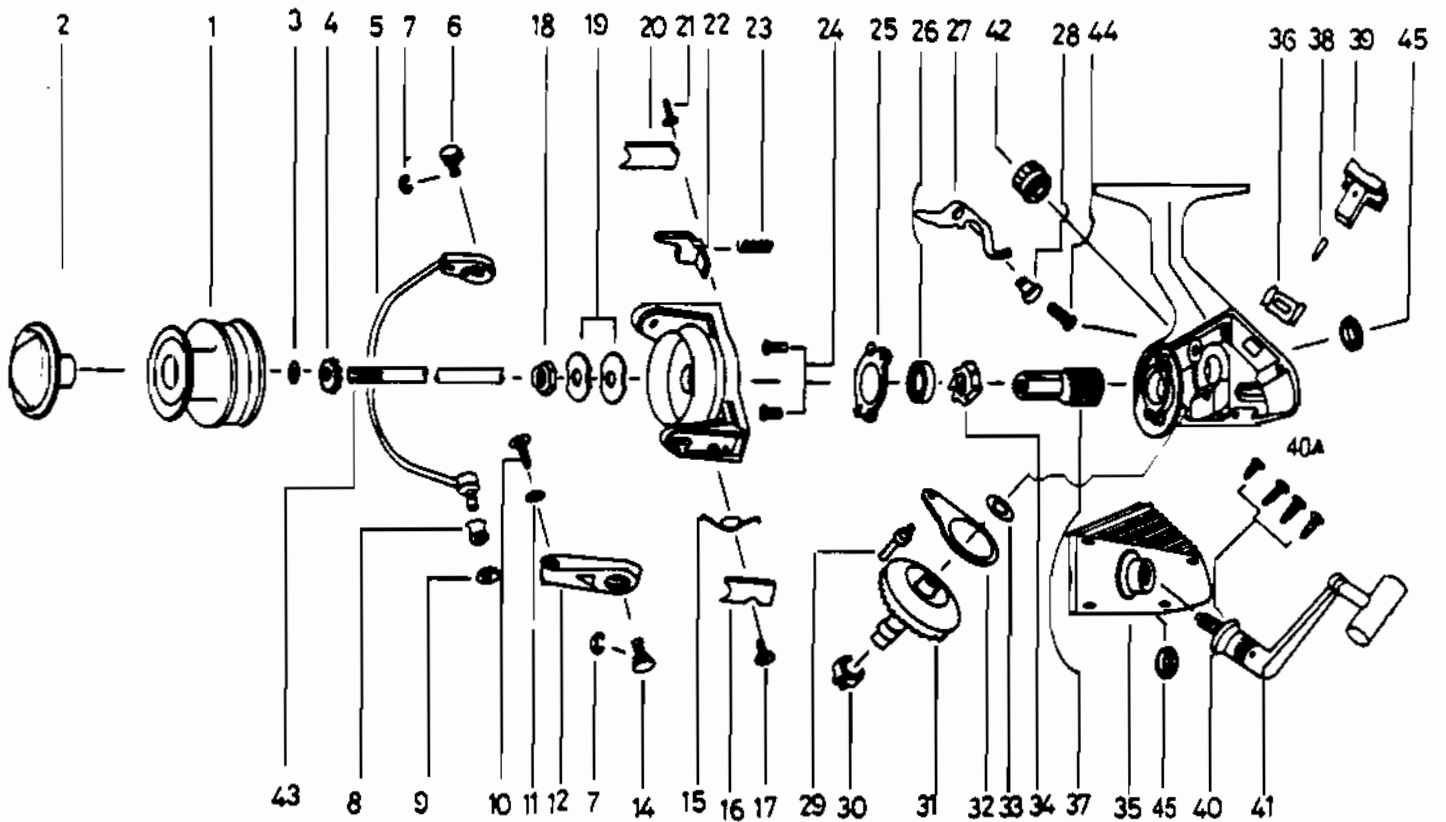


QUANTUM QG2



Key No.	Part No.	Description	Key No.	Part No.	Description
1	LK321	SPOOL ASSY.	28	NS014	A/R CLAW BUSHING
2	LK050	DRAG KNOB ASSY.	29	NS081	OSC. SLIDER PIN
3	LK030	SPOOL ADJ. WASHER	30	NS086	SLIDING SPRING
4	LK066	CLICK GEAR	31	NS012	DRIVE GEAR
5	NS347	BAIL ARM ASSY.	32	NS025	OSCILLATING SLIDER
6	NS044	BAIL HOLDER PIN	33	NS026	DRIVE GEAR ADJ. WSHR
7	NS002	E-CLIP	34	NS060	RATCHET GEAR
8	LK004	LINE ROLLER	35	LK323	BODY COVER
9	NS017	BAIL COLLAR	36	NS090	A/R LVR. PLATE SPR.
10	NS108	BAIL SCREW	37	LK011	PINION GEAR
11	NS102	BAIL WASHER	38	NS091	A/R LVR. PIN
12	NS007	ARM LEVER	39	NS059	ANTI-REVERSE LEVER
14	NS043	ARM LEVER PIN	40	LK057	BODY COVER SCREW
15	NS022	BAIL SPRING	40	NS057	BODY COVER SCREW
16	NS087	BAIL SPRING COVER	41	LK318	HANDLE ASSY.
17	NS085	BAIL SPRING CVR SCR	42	LK073	HANDLE SCREW CAP
18	NS006	ROTOR NUT	43	LK315	MAIN SHAFT
19	NS065	ROTOR RET. WASHER	44	NS089	A/R CLAW SCREW
20	NS024	KICK LEVER COVER	45	NS013	BODY BUSHING
21	NS037	KICK LVR CVR SCR	47	LK301	BODY
22	NS019	KICK LEVER	48	NS009	ROTOR
23	NS049	KICK LEVER SPRING			
24	NS080	BEARING PLATE SCREW			
25	NS040	BEARING PLATE			
26	LK028	BEARING			
27	LK063	ANTI-REVERSE CLAW			

WWW.REELDR.COM

Prices subject to change without notice. Prices do not include postage and handling.

PLEASE ORDER BY PART NUMBER

Rev. 5/93

Zebco Division Brunswick Corporation, Box 270, Tulsa, OK 74101 USA 918-836-5581

