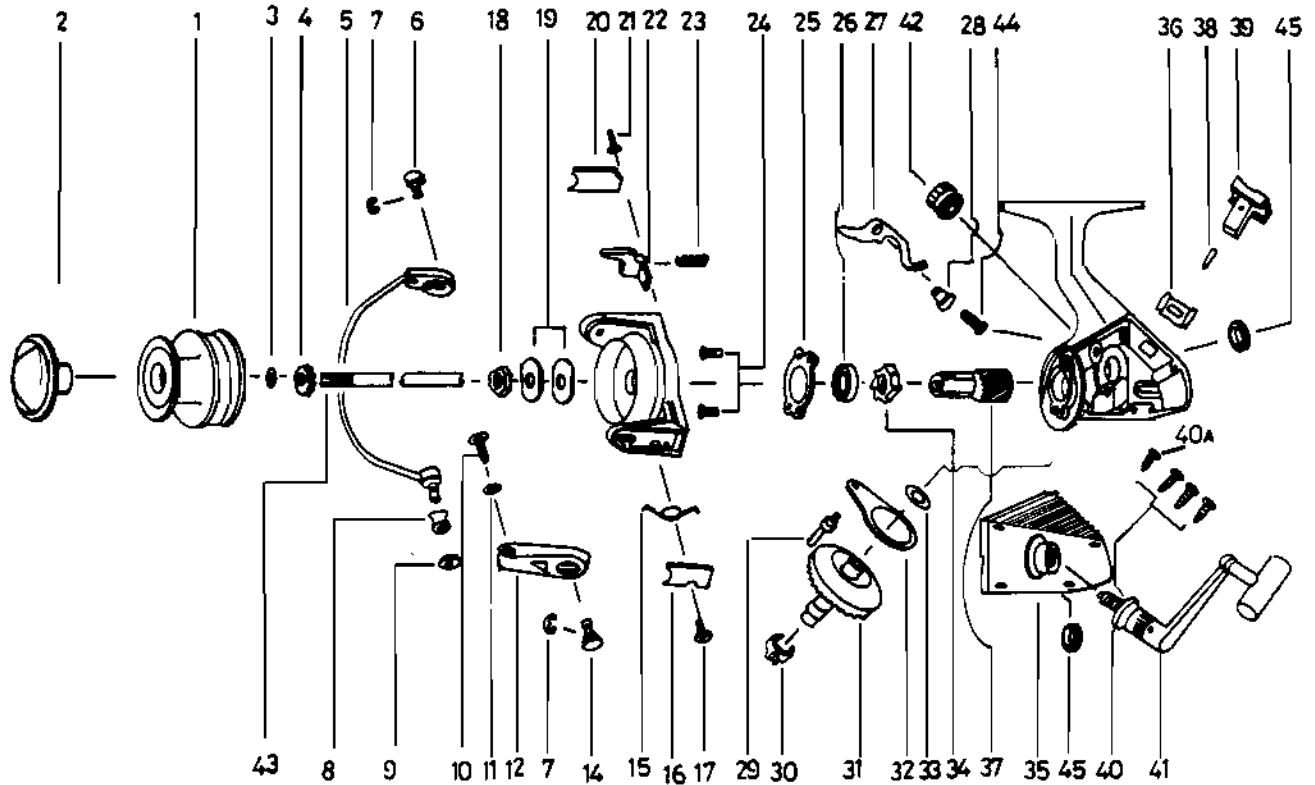


QUANTUM® QG2



KEY PART NO. NO.

KEY PART NO.	DESCRIPTION
1	LK321 SPOOL ASSY.
2	LK050 DRAG KNOB ASSY.
3	LK030 SPOOL ADJ. WASHER
4	LK066 CLICK GEAR
5	NS347 BAIL ARM ASSY.
6	NS044 BAIL HOLDER PIN
7	NS002 E-CLIP
8	LK004 LINE ROLLER
9	NS017 BAIL COLLAR
10	NS108 BAIL SCREW
11	NS102 BAIL WASHER
12	NS007 ARM LEVER
14	NS043 ARM LEVER PIN
15	NS022 BAIL SPRING
16	NS087 BAIL SPRING COVER
17	NS085 BAIL SPRING CVR SCR
18	NS006 ROTOR NUT
19	NS065 ROTOR RET. WASHER
20	NS024 KICK LEVER COVER
21	NS037 KICK LVR CVR SCR
22	NS019 KICK LEVER
23	NS049 KICK LEVER SPRING
24	NS080 BEARING PLATE SCREW
25	NS040 BEARING PLATE

KEY PART NO. NO.

KEY PART NO.	DESCRIPTION
26	LK028 BEARING
27	LK063 ANTI-REVERSE CLAW
28	NS014 A/R CLAW BUSHING
29	NS081 OSC. SLIDER PIN
30	NS086 SLIDING SPRING
31	NS012 DRIVE GEAR
32	NS025 OSCILLATING SLIDER
33	NS026 DRIVE GEAR ADJ. WSHR
34	NS050 RATCHET GEAR
35	LK323 BODY COVER
36	NS090 A/R LVR. PLATE SPR.
37	LK011 PINION GEAR
38	NS091 A/R LVR. PIN
39	NS059 ANTI-REVERSE LEVER
40	LK057 BODY COVER SCREW
40	NS057 BODY COVER SCREW
41	LK318 HANDLE ASSY.
42	LK073 HANDLE SCREW CAP
43	LK315 MAIN SHAFT
44	NS089 A/R CLAW SCREW
45	NS013 BODY BUSHING
47	LK301 BODY
48	NS009 ROTOR

WWW.REELDR.COM

Prices subject to change without notice. Prices do not include postage and handling.

PLEASE ORDER BY PART NUMBER

Rev. 11/90

Zabco Division Brunswick Corporation, Box 270, Tulsa, OK 74101 USA 918-836-5581

