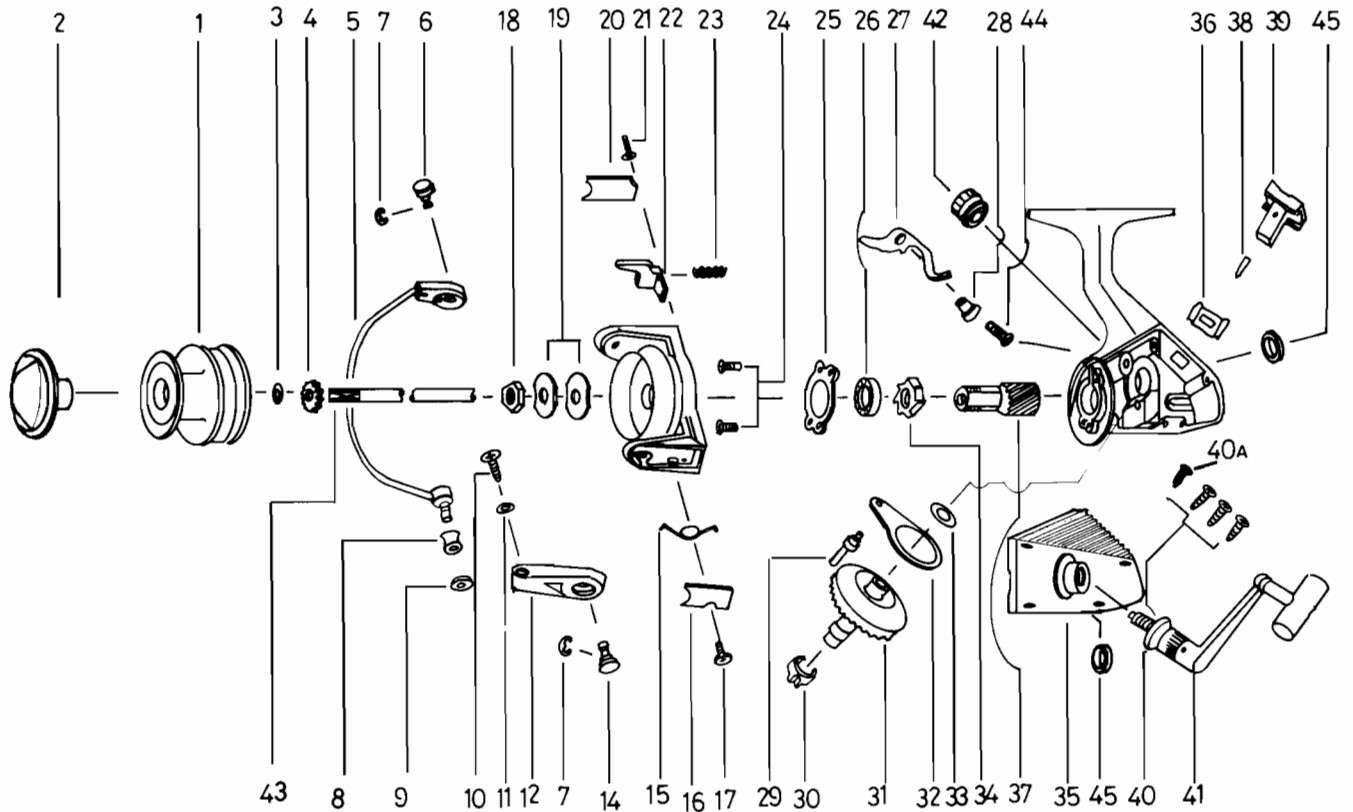


QUANTUM® QG2



**KEY PART
NO. NO.**

KEY PART NO. NO.	DESCRIPTION
1 LK321	SPOOL ASSY.
2 LK050	DRAG KNOB ASSY.
3 LK030	SPOOL A/J W/S
4 LK066	CLICK GEAR
5 NS347	BAIL ARM ASSY.
6 NS044	BAIL HOLDER PIN
7 NS002	E-CLIP
8 LK004	LINE ROLLER
9 NS017	BAIL COLLAR
10 NS108	BAIL SCREW
11 NS102	BAIL WASHER
12 NS007	ARM LEVER
14 NS043	ARM LEVER PIN
15 NS022	BAIL SPRING
16 NS087	BAIL SPRING COVER
17 NS085	BAIL SPRING CVR SCR
18 NS006	ROTOR NUT
19 NS065	ROTOR RET. WASHER
20 NS024	KICK LEVER COVER
21 NS037	KICK LVR CVR SCR
22 NS019	KICK LEVER
23 NS049	KICK LEVER SPRING
24 NS080	BEARING PLATE SCREW
25 NS040	BEARING PLATE

**KEY PART
NO. NO.**

KEY PART NO. NO.	DESCRIPTION
26 LK028	BEARING
27 LK063	ANTI-REVERSE CLAW
28 NS014	A/R CLAW BUSHING
29 NS081	O/S SLIDER PIN
30 NS086	SLIDING SPRING
31 NS012	DRIVE GEAR
32 NS025	OSCILLATING SLIDER
33 NS026	DRIVE GEAR ADJ. WSHR
34 NS060	RATCHET GEAR
35 LK323	BODY COVER
36 NS090	A/R LVR. PLATE SPR.
37 LK011	PINION GEAR
38 NS091	A/R LVR. PIN
39 NS059	ANTI-REVERSE LEVER
40 A LK057	BODY COVER SCREW
40 NS057	BODY COVER SCREW
41 LK318	HANDLE ASSY.
42 LK073	HANDLE SCREW CAP
43 LK315	MAIN SHAFT
44 NS089	A/R CLAW SCREW
45 NS013	BODY BUSHING
47 LK301	BODY
48 NS009	ROTOR

WWW.REELDR.COM

Prices subject to change without notice. Prices do not include postage and handling.

PLEASE ORDER BY PART NUMBER

Rev. 9/88

Zebco Division Brunswick Corporation, Box 270, Tulsa, OK 74101 USA 918-836-5581

