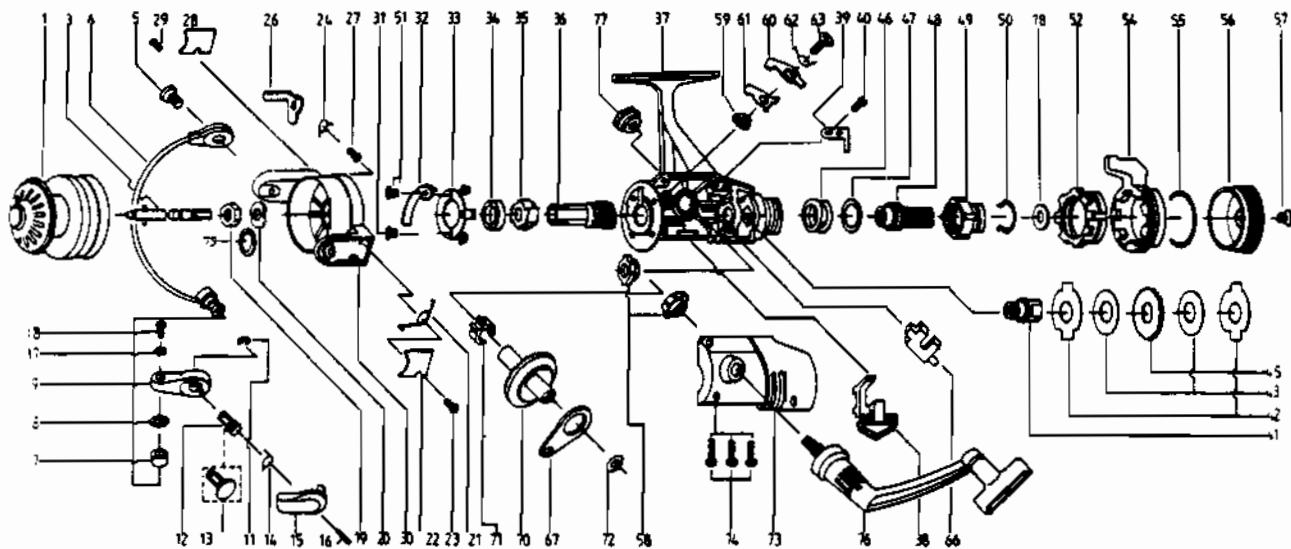


# QUANTUM® QG05



**KEY PART  
NO. NO.**

1	GT321	SPOOL ASSEMBLY
3	BT313	MAIN SHAFT ASSY
5	BT048	BAIL HOLDER SCREW
6	BT347	BAIL ARM ASSY.
7	VB004	LINE ROLLER
8	VB016	LN ROLLER BUSHING
9	BT007	ARM LEVER
11	BT002	E-CLIP
12	BT113	TRIGGER HOLDER
13	BT111	ARM LEVER CAP
14	BT114	TRIGGER SPRING
15	BT115	TRIGGER
16	BT116	TRIGGER PIN
17	VB102	BAIL AXLE WASHER
18	VB108	BAIL AXLE SCREW
19	VB006	ROTOR NUT
20	BT055	ROTOR RETAINER
21	BT022	BAIL SPRINGS
22	BT087	BAIL SPRING COVER
23	BT085	BAIL SPR. COVER SCREW
24	BT049	KICK LEVER SCREW
26	BT019	KICK LEVER
27	BT037	KICK LEVER SCREW
28	BT024	KICK LEVER COVER
29	BT085	BAIL SPR. COVER SCREW
30	BT009	ROTOR ASSY
31	BT080	BEARING PLATE SCREW
32	BT082	KICK LEVER GUIDE
33	BT040	BEARING PLATE
34	RB028	BALL BEARING
35	BT060	RATCHET GEAR
36	BT011	PINION GEAR
37	GT301	BODY ASSEMBLY
38	BT059	ANTI-REVERSE LEVER
39	BT068	CLICK CLAW
40	BT067	CLICK CLAW SCREW
41	BT104	SLIDER HOLDER

**KEY PART  
NO. NO.**

42	BT030	REAR DRAG WASHER "A"
43	BT039	REAR DRAG WASHER "B"
45	BT066	CLICK GEAR
46	BT031	REAR DRAG COIL SPR.
47	BT046	REAR DRAG ADJ. WSHR.
48	BT112	REAR DRAG NUT
49	BT017	SLIDING SCREW
50	BT033	BACK CLICK CLAW
51	BT182	KICK LEVER GUIDE SCR
52	GT093	FIGHTING PULL SCREW
54	GT094	FIGHTING LEVER
55	GT095	FIGHTING LEVER
56	GT032	REAR DRAG CAP
57	VB079	DRAG SCREW
58	BT013	BODY COVER BUSHING
59	BT014	A/R CLAW BUSHING
60	BT063	A/R CLAW (N)
61	BT064	A/R CLAW (S)
62	BT061	A/R CLAW SPRING
63	BT089	A/R CLAW SCREW
66	BT081	PIN SLIDER
67	BT025	OSCILLATING SLIDER
70	BT012	DRIVE GEAR
71	BT086	SLIDING SPRING
72	RB026	CRANK GEAR SHIM
73	GT323	BODY COVER ASSEMBLY
74	BT057	BODY COVER SCREW
76	GT318	HANDLE ASSEMBLY
77	GT073	HANDLE SCREW CAP
78	BT046	REAR DRAG ADJ. WSHR.
79	BT120	ROTOR RET. SPRG. W/S
80	GT005	BACK CLAW (FIGHTING)
81	GT018	FIGHTING CLICK WASHER

*\*Not shown in diagram*

Key 80 fits between keys 49, 50

Key 81 fits between keys 52, 54

[WWW.REELDR.COM](http://WWW.REELDR.COM)

Prices subject to change without notice. Prices do not include postage and handling.

**PLEASE ORDER BY PART NUMBER**

Rev. 11/90

Zebco Division Brunswick Corporation, Box 270, Tulsa, OK 74101 USA 918-836-5581

