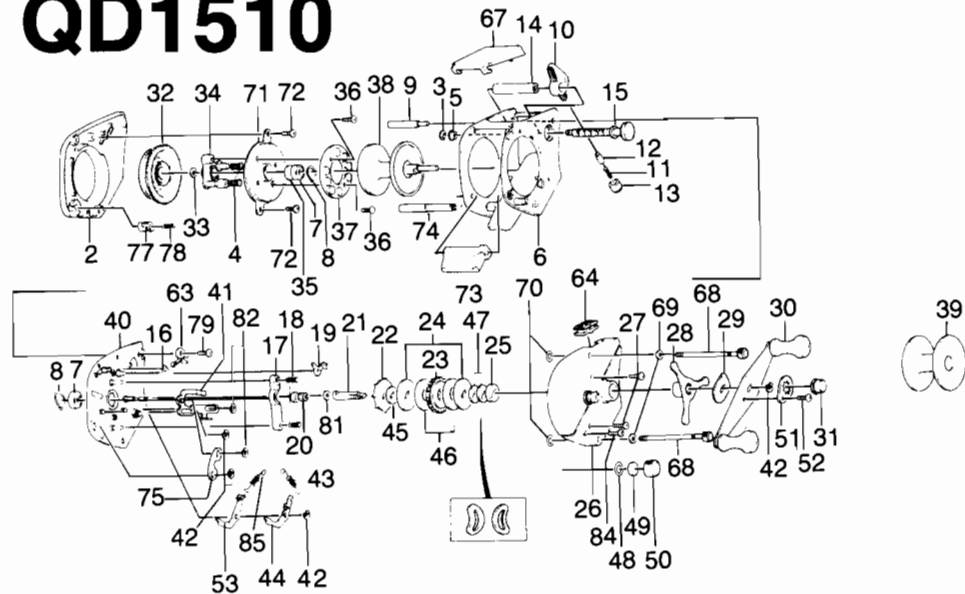


QUANTUM[®] QD1510



**KEY PART
NO. NO.**

NO. NO.	DESCRIPTION
2 DX4101	LEFT SIDE PLATE
3 CX4152	WORM SHAFT RETAINER
4 DX4301	MAGNET RET. SPRING
5 CX4156	WORM GUARD BUSHING
6 DX4051	FRAME
7 CX4252	SPOOL SHFT BEARING
8 CX4253	BEARING RETAINER
9 DX4159	FRAME POST
10 DX4201	LINE GUIDE
11 CX4203	LINE GUIDE PAWL SPRING
12 CX4202	LINE GUIDE PAWL
13 CX4204	PAWL CAP
14 DX4158	WORM SHAFT GUARD
15 DX4151	WORM SHAFT
16 DX4502	SPOOL RELEASE SPRING
17 DX4401	PINION YOKE
18 CX4403	PINION YOKE SPRING
19 DX4452	ANTI-REV. PAWL
20 CX4256	PINION GEAR
21 DX4652	DRIVE SHAFT
22 DX4451	ANTI-REV. RATCHET
23 CX4651	DRIVE BEAR
24 CX4659	DRAG WASHER B
25 CX4254	DRIVE SHFT BUSH
26 DX4103	RIGHT SIDE PLATE
27 CX4352	RIGHT SIDE COVER SCREW
28 CX4663	STAR DRAG
29 CX4660	HANDLE WASHER
30 CX4701	HANDLE
31 CX4702	HANDLE NUT
32 DX4303	MAGNETIC CONTROL DIAL
33 CX4250	O RING
34 DX4261	MAGNET RET. SUPPORT
35 CX4255	SPOOL TENSION SHIM A
36 CX4602	MAGNET RETAINER SCREW
37 DX4257	MAGNET RETAINER

**KEY PART
NO. NO.**

NO. NO.	DESCRIPTION
38 DX4251	SPOOL
39 DX4260	U-SPOOL CONVERTER
40 DX4351	SET PLATE
41 DX4402	SPOOL RELEASE PLATE
42 CX4656	RETAINER CLIP
43 DX4353	SET PLATE ACT. SPR. A
44 DX4503	SET PLATE ACTUATOR B
45 DX4658	BASE DRAG WASHER
46 CX4661	DRAG WASHER A
47 CX4662	DRIVE SHAFT SPR. WSHR
48 CX4258	O RING
49 CX4302	SPOOL TENSION SHIM B
50 CX4259	SPOOL TENSION KNOB
51 CX4703	HANDLE NUT LOCK
52 CX4704	HANDLE NUT LOCK SCREW
53 DX4501	SET PLATE ACTUATOR A
63 DX4455	ANTI-REV. LVR. PLATE
64 DX4456	ANTI-REV. LEVER
67 DX4100	LEVEL WIND HOOD
68 DX4102	LEFT SIDE PLATE SCREW
69 KX4110	L-SIDE PLT. SCR. WSHR.
70 KX4264	O-RING
71 DX4107	SPOOL COVER B
72 KX4252	SPOOL COVER SCREW
73 DX4406	SPOOL RELEASE LEVER
74 DX4404	SPOOL RELEASE LVR SHFT
75 DX4405	TRIP ARM
77 DX4305	DIAL LOCK BUTTON
78 KX4304	DIAL LOCK BUTTON SPR.
79 KX4052	FRAME POST SCREW
81 KX4653	DRIVE SHAFT WSHR
82 DX4656	RETAINER CLIP B
84 DX4355	SET PLATE SCREW
85 DX4354	SET PLATE ACT. SPR. B
KX4000	SPARE PARTS KIT W/WRENCH

WWW.REELDR.COM

Prices subject to change without notice. Prices do not include postage and handling.

PLEASE ORDER BY PART NUMBER

Rev. 9/88

Zebco Division Brunswick Corporation, Box 270, Tulsa, OK 74101 USA 918-836-5581

