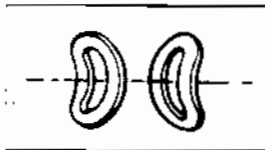
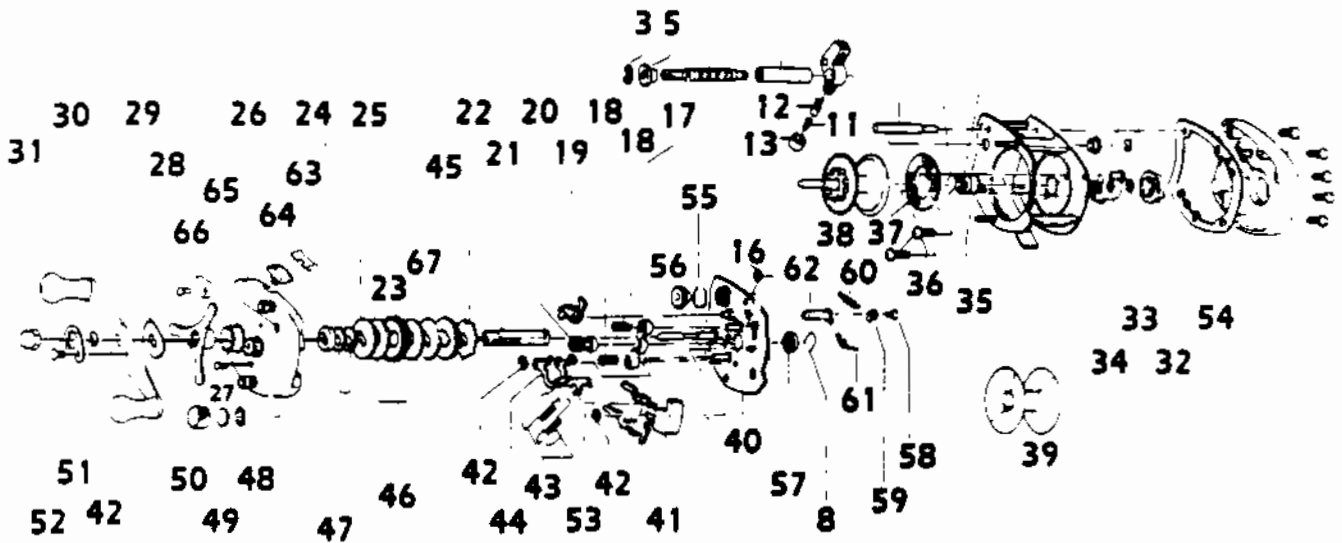


QUANTUM QD1420L

DISCONTINUED

15 14 10 9 7 6 5 3 2 1
8 4



Key No.	Part No.	Description	Key No.	Part No.	Description
	CX4000	SPARE PARTS W/WRENCH	32	CX4303	MAGNETIC CONTROL DIAL
	MX310	SET PLATE	33	CX4250	O RING
	MX324	SIDE COVER	34	CX4261	MAGNET RET. SUPPORT
	T130	WRENCH	35	CX4255	SPOOL TENSION SHIM A
1	LX4102	RIGHT SIDE PLATE SCR.	36	CX4602	MAGNET RETAINER SCREW
2	LX4101	RIGHT SIDE PLATE	37	CX4257	MAGNET RETAINER
3	CX4152	WORM SHAFT RETAINER	38	MX4251	SPOOL
4	CX4301	MAGNET RET. SPRING	39	FX4260	U SPOOL CONVERTER
5	CX4156	WORM GUARD BUSHING	40	MX4351	SET PLATE
6	MX4051	FRAME	41	LX4402	SPOOL RELEASE BUTTON
7	CX4252	SPOOL SHFT BEARING	42	CX4656	RETAINER CLIP
8	CX4253	BEARING RETAINER	43	FX4353	SET PLATE ACT. SPRING
9	EX4159	FRAME POST SILVER	44	LX4503	SET PLATE ACT. 'B'
10	CX4261	LINE GUIDE	45	LX4658	ANTI-REVERSE RATCHET
11	CX4203	LINE GUIDE PAWL SPRING	46	CX4661	DRAG WASHER A
12	CX4202	LINE GUIDE PAWL	47	CX4662	DRIVE SHAFT SPR. WSHR
13	CX4204	PAWL CAP	48	CX4258	O RING
14	EX4158	WORM SHFT GUARD-SILVER	49	CX4302	SPOOL TENSION SHIM B
15	FX4151	WORM SHAFT	50	CX4259	SPOOL TENSION KNOB
16	CX4502	SPOOL RELEASE SPRING	51	LX4703	HANDLE NUT LOCK
17	CX4401	PINION YOKE	52	LX4704	HANDLE NUT LOCK SCR
18	CX4403	PINION YOKE SPRING	53	LX4501	SET PLATE ACT. 'A'
19	LX4452	ANTI-REVERSE PAWL	54	CX4107	LEFT PLATE SPACER-WH
20	LX4256	PINION GEAR	55	CX4153	GEAR RETAINING CLIP
21	LX4652	DRIVE SHAFT	56	LX4150	WORM SHAFT GEAR
22	LX4451	RELEASE RATCHET	57	CX4252	SPOOL SHFT BEARING
23	LX4651	DRIVE GEAR	58	FX4552	CLICK PAWL SCREW
24	CX4659	DRAG WASHER B	59	MX4551	CLICK PAWL
25	CX4254	DRIVE SHFT BUSH	60	MX4553	CLICK PAWL SPRING
26	MX4103	LEFT SIDE PLATE	61	FX4556	CLICK CAM SPRING
27	LX4352	LEFT SIDE CVR SCREW	62	MX4557	CLICK CAM
28	LX4663	STAR DRAG	63	FX4455	ANTI-REV. LVR. PLATE
29	CX4660	HANDLE WASHER	64	FX4456	ANTI-REV. LEVER
30	CX4701	HANDLE	65	FX4558	BAIT CLICK LEVER
31	LX4702	HANDLE NUT	66	MX4559	BAIT CLICK LVR SCREW

WWW.REELDR.COM

Prices subject to change without notice. Prices do not include postage and handling. Some parts may not be available.

PLEASE ORDER BY PART NUMBER

Rev. 5/93

Zebco Division Brunswick Corporation, Box 270, Tulsa, OK 74101 USA 918-836-5581

