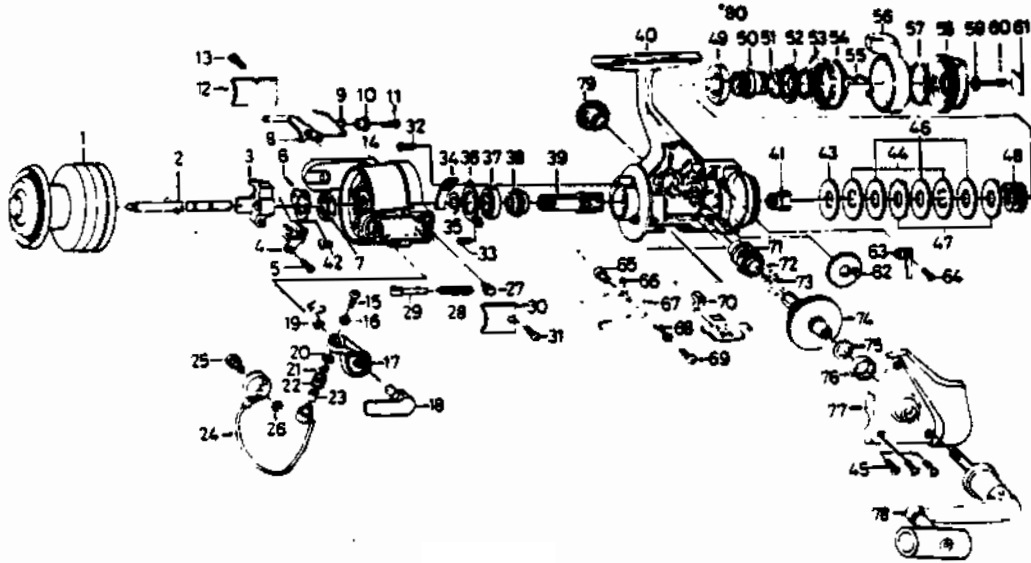


QUANTUM QC5



KEY PART NO. NO.	DESCRIPTION
PT321-1	SPOOL ASSY. EXTRA
1 PT321	SPOOL ASSY. (MAIN)
2 NT315	MAIN SHAFT
3 NT025	OSCILLATING SLIDER
4 NT083	OSC. SLIDER RETAINER
5 NT161	OSC. SLIDER SCREW
6 NT088	ROTOR NUT LOCK WASHER
7 NT006	ROTOR NUT
8 PT019	BAIL TRIP LEVER
9 NT049	BAIL TRIP LEVER SPRING
10 NT137	BAIL TRIP LV. BUSHING
11 NT037	BAIL TRIP LEVER SCREW
12 NT024	BAIL TRIP COVER
13 NT085	BAIL SPG COVER SCRW
14 PT009	ROTOR
15 NT108	BAIL SCREW
16 MT102	LOCK WASHER
17 NT007	BAIL ARM
18 NT115	CAM CAST LEVER
19 MT002	CAM CAST LV. RETAINER
20 MT017	LINE ROLLER COLLAR
21 MT015	LINE ROLLER
22 MT004	LINE ROLLER
23 MT016	LINE ROLLER BUSHING
24 PT347	BAIL
25 NT044	BAIL HOLDER PIN
26 MT003	BAIL TRIP CAM RET.
27 NT020	BAIL SPG SHAFT HLD
28 NT022	BAIL SPRING
29 NT029	BAIL SPRING SHAFT
30 NT087	BAIL SPRING COVER
31 NT085	BAIL SPG COVER SCRW
32 NT080	BEARING RET.SCREW A
33 NT093	BEARING RET.SCREW B
34 NT082	BAIL TRIP PLATE
35 NT027	PINION WASHER
36 NT040	BEARING RETAINER
37 NT028	BALL BEARING
38 NT060	ANTI-REV. RATCHET
39 NT011	PINION GEAR
40 PT301	BODY
41 NT066	CLICK GEAR

KEY PART NO. NO.	DESCRIPTION
42 NT058	RTR NUT LOCK SCREW
43 NT039	DRAG WASHER B
44 NT041	EARED WASHER
45 NT057	SIDE COVER SCREW
46 NT046	DRAG WASHER C
47 NT030	KEY WASHER
48 NT031	DRAG COIL SPRING
49 NT112	DRAG NUT A
50 NT121	DRAG SCREW
51 NT106	DRAG SCREW WASHER A
52 NT110	DRAG HOLDER
53 NT111	DRAG SCREW WASHER B
54 NT117	DRAG NUT B
55 NT118	DRAG SPRING
56 NT094	POWER LEVER
57 NT095	POWER LEVER RETAINER
58 NT032	DRAG NNOB
59 NT119	DRAG KNOB WASHER
60 NT079	DRAG KNOB SCREW
61 NT120	DRAG KNOB NAME PLATE
62 NT053	OSCILLATING GEAR
63 NT068	CLICK LEAF SPRING
64 NT067	CLICK LEAF SPRING SCRW
65 NT014	ANTI-REV PAWL COLLAR
66 NT083	ANTI-REV. PAWL A
67 NT064	ANTI-REV. PAWL B
68 NT061	ANTI-REV PAWL SPG A
69 NT089	ANTI-REV PAWL SCREW
70 NT059	ANTI-REV. LEVER
71 NT052	BUSHING
72 NT253	OSCILLATING PN GEAR
73 NT086	ANTI-REV PAWL SPG B
74 NT012	DRIVE GEAR
75 NT026	DRIVE GEAR WASHER
76 NT157	BALL BEARING
77 PT323	SIDE COVER
78 PT318	HANDLE ASSY.
79 MT073	HANDLE SCREW CAP
*80 NT121	DRAG SCREW

*Not pictured
Located between Keys 49 & 50

WWW.REELDR.COM

Prices subject to change without notice. Prices do not include postage and handling.

PLEASE ORDER BY PART NUMBER

Rev. 11/90

Zebco Division Brunswick Corporation, Box 270, Tulsa, OK 74101 USA 918-638-6581

