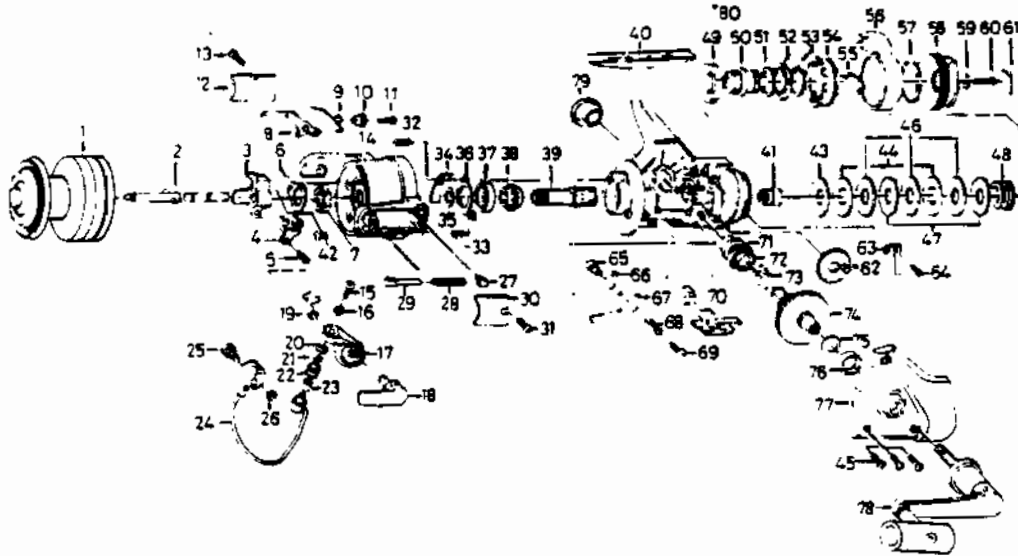


# QUANTUM QC4



**KEY PART  
NO. NO.**

|    |         |                        |
|----|---------|------------------------|
| 1  | NT321-1 | SPOOL ASSY. EXTRA      |
| 2  | NT321   | SPOOL ASSY. (MAIN)     |
| 3  | NT025   | MAIN SHAFT             |
| 4  | NT083   | OSCILLATING SLIDER     |
| 5  | NT161   | OSC. SLIDER RETAINER   |
| 6  | NT088   | OSC. SLIDER SCREW      |
| 7  | NT006   | ROTOR NUT LOCK WASHER  |
| 8  | NT019   | ROTOR NUT              |
| 9  | NT049   | BAIL TRIP LEVER        |
| 10 | NT137   | BAIL TRIP LEVER SPRING |
| 11 | NT037   | BAIL TRIP LV. BUSHING  |
| 12 | NT024   | BAIL TRIP LEVER SCREW  |
| 13 | NT085   | BAIL TRIP COVER        |
| 14 | NT009   | BAIL SPG COVER SCR     |
| 15 | NT108   | ROTOR                  |
| 16 | MT102   | BAIL SCREW             |
| 17 | NT007   | LOCK WASHER            |
| 18 | NT115   | BAIL ARM               |
| 19 | MT002   | CAM CAST LEVER         |
| 20 | MT017   | CAM CAST LV. RETAINER  |
| 21 | MT015   | LINE ROLLER COLLAR     |
| 22 | MT004   | LINE ROLLER            |
| 23 | MT016   | LINE ROLLER BUSHING    |
| 24 | NT347   | BAIL                   |
| 25 | NT044   | BAIL HOLDER PIN        |
| 26 | MT003   | BAIL TRIP CAM RET.     |
| 27 | NT020   | BAIL SPG SHAFT HLD     |
| 28 | NT022   | BAIL SPRING            |
| 29 | NT029   | BAIL SPRING SHAFT      |
| 30 | NT087   | BAIL SPRING COVER      |
| 31 | NT085   | BAIL SPG COVER SCR     |
| 32 | NT080   | BEARING RET. SCREW A   |
| 33 | NT093   | BEARING RET. SCREW B   |
| 34 | NT082   | BAIL TRIP PLATE        |
| 35 | NT027   | PINION WASHER          |
| 36 | NT040   | BEARING RETAINER       |
| 37 | NT028   | BALL BEARING           |
| 38 | NT060   | ANTI-REV. RATCHET      |
| 39 | NT011   | PINION GEAR            |
| 40 | NT301   | BODY                   |
| 41 | NT066   | CLICK GEAR             |
| 42 | NT058   | RTR NUT LOCK SCREW     |

**KEY PART  
NO. NO.**

|    |       |                       |
|----|-------|-----------------------|
| 43 | NT039 | DRAG WASHER B         |
| 44 | NT041 | BARRED WASHER         |
| 45 | NT057 | SIDE COVER SCREW      |
| 46 | NT046 | DRAG WASHER C         |
| 47 | NT030 | KEY WASHER            |
| 48 | NT031 | DRAG COIL SPRING      |
| 49 | NT112 | DRAG NUT A            |
| 50 | NT121 | DRAG SCREW            |
| 51 | NT106 | DRAG SCREW WASHER A   |
| 52 | NT110 | DRAG HOLDER           |
| 53 | NT111 | DRAG SCREW WASHER B   |
| 54 | NT117 | DRAG NUT B            |
| 55 | NT118 | DRAG SPRING           |
| 56 | NT094 | POWER LEVER           |
| 57 | NT095 | POWER LEVER RETAINER  |
| 58 | NT032 | DRAG NNOB             |
| 59 | NT119 | DRAG KNOB WASHER      |
| 60 | NT079 | DRAG KNOB SCREW       |
| 61 | NT120 | DRAG KNOB NAME PLATE  |
| 62 | NT053 | OSCILLATING GEAR      |
| 63 | NT068 | CLICK LEAF SPRING     |
| 64 | NT067 | CLICK LEAF SPRING SCR |
| 65 | NT014 | ANTI-REV PAWL COLLAR  |
| 66 | NT063 | ANTI-REV. PAWL A      |
| 67 | NT064 | ANTI-REV. PAWL B      |
| 68 | NT061 | ANTI-REV PAWL SPG A   |
| 69 | NT089 | ANTI-REV PAWL SCREW   |
| 70 | NT059 | ANTI-REV. LEVER       |
| 71 | NT052 | BUSHING               |
| 72 | NT253 | OSCILLATING PN GEAR   |
| 73 | NT086 | ANTI-REV PAWL SPG B   |
| 74 | NT012 | DRIVE GEAR            |
| 75 | NT026 | DRIVE GEAR WASHER     |
| 76 | NT157 | BALL BEARING          |
| 77 | NT323 | SIDE COVER            |
| 78 | NT318 | HANDLE ASSY.          |
| 79 | NT073 | HANDLE SCREW CAP      |
| 80 | NT121 | DRAG SCREW            |

\*Not pictured  
Located between Keys 49 & 50

[WWW.REELDR.COM](http://WWW.REELDR.COM)

Prices subject to change without notice. Prices do not include postage and handling.

**PLEASE ORDER BY PART NUMBER**

Rev. 11/90

Zebco Division Brunswick Corporation, Box 270, Tulsa, OK 74101 USA 918-838-5581

