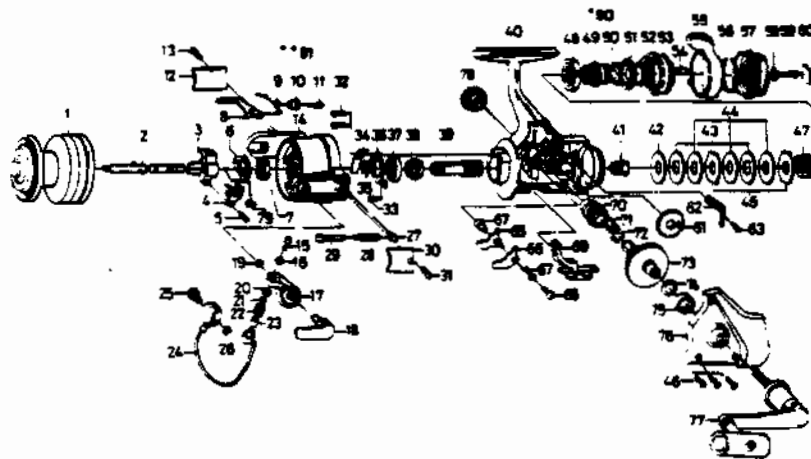


QUAN M^o QC3



KEY PART NO.	NO.
	MT321-1
1	MT321
2	MT315
3	MT025
4	MT083
5	MT151
6	MT088
7	MT006
8	MT019
9	MT049
10	MT137
11	MT037
12	MT024
13	MT085
14	MT009
15	MT108
16	MT102
17	MT007
18	MT115
19	MT002
20	MT017
21	MT015
22	MT004
23	MT016
24	MT347
25	MT044
26	MT003
27	MT020
28	MT022
29	MT029
30	MT087
31	MT085
32	MT080
33	MT093
34	MT082
35	MT027
36	MT040
37	MT028
38	MT060
39	MT011
40	MT301
41	MT066

DESCRIPTION
SPOOL ASSY. EXTRA
SPOOL ASSY. (MAIN)
MAIN SHAFT
OSCILLATING SLIDER
OSC. SLIDER RETAINER
OSC. SLIDER SCREW
ROTOR NUT LOCK WASHER
ROTOR NUT
BAIL TRIP LEVER
BAIL TRIP LEVER SPRING
BAIL TRIP LV. BUSHING
BAIL TRIP LEVER SCREW
BAIL TRIP COVER
BAIL SPG COVER SCRW
ROTOR
BAIL SCREW
LOCK WASHER
BAIL ARM
CAM CAST LEVER
CAM CAST LV. RETAINER
LINE ROLLER COLLAR
LINE ROLLER
LINE ROLLER BUSHING
BAIL
BAIL HOLDER PIN
BAIL TRIP CAM RET.
BAIL SPG SHAFT HLDR
BAIL SPRING
BAIL SPRING SHAFT
BAIL SPRING COVER
BAIL SPG COVER SCRW
BEARING RET. SCREW A
BEARING RET. SCREW B
BAIL TRIP PLATE
PINION WASHER
BEARING RETAINER
BALL BEARING
ANTI-REV. RATCHET
PINION GEAR
BODY
CLICK GEAR

KEY PART NO.	NO.
42	MT039
43	MT041
44	MT046
45	MT030
46	MT057
47	MT031
48	MT112
49	MT121
50	MT106
51	MT110
52	MT111
53	MT117
54	MT118
55	MT094
56	MT095
57	MT032
58	MT119
59	MT079
60	MT120
61	MT053
62	MT068
63	MT067
64	MT014
65	MT063
66	MT064
67	MT061
68	MT089
69	MT059
70	MT052
71	MT253
72	MT086
73	MT012
74	MT026
75	MT157
76	MT323
77	MT318
78	MT073
79	MT058
*80	MT121
**81	MT122

DESCRIPTION
DRAG WASHER B
EARED WASHER
DRAG WASHER C
KEY WASHER
SIDE COVER SCREW
DRAG COIL SPRING
DRAG NUT A
DRAG SCREW
DRAG SCREW WASHER A
DRAG HOLDER
DRAG SCREW WASHER B
DRAG NUT B
DRAG SPRING
POWER LEVER
POWER LEVER RETAINER
DRAG KNOB
DRAG KNOB WASHER
DRAG KNOB SCREW
DRAG KNOB NAME PLATE
OSCILLATING GEAR
CLICK LEAF SPRING
CLICK LEAF SPRING SCRW
ANTI-REV PAWL COLLAR
ANTI-REV. PAWL A
ANTI-REV. PAWL B
ANTI-REV PAWL SPG A
ANTI-REV PAWL SCREW
ANTI-REV. LEVER
BUSHING
OSCILLATING PN GEAR
ANTI-REV PAWL SPG B
DRIVE GEAR
DRIVE GEAR WASHER
BALL BEARING
SIDE COVER
HANDLE ASSY. <i>BK318 F.2</i>
HANDLE SCREW CAP
RTR NUT LOCK SCREW
DRAG SCREW
BAIL TRIP LEVER WSHR

*Not pictured
Located between Keys 49 & 50

**Not pictured
Located between Keys 10 & 11

WWW.REELDR.COM

Prices subject to change without notice. Prices do not include postage and handling.

PLEASE ORDER BY PART NUMBER

Rev. 11/90

Zabco Division Brunswick Corporation, Box 270, Tulsa, OK 74101 USA 918-636-6581

