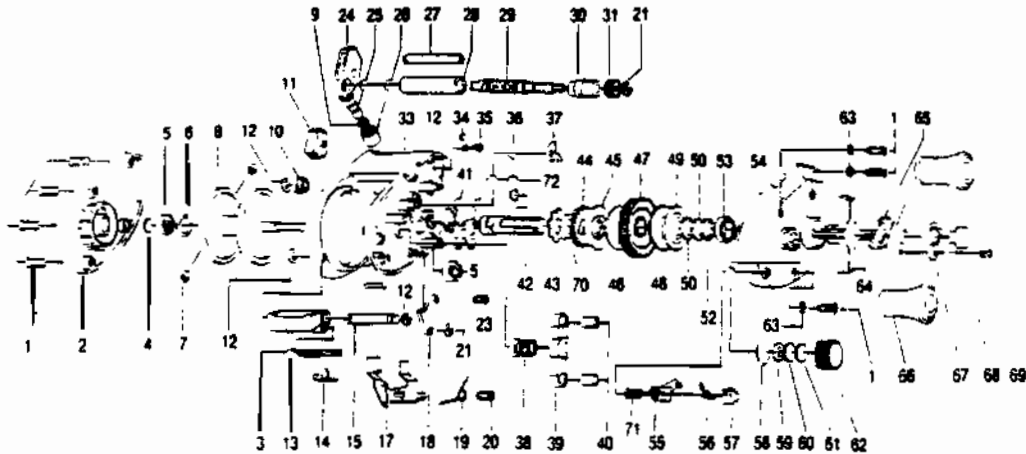


# QUANTUM Pro-Lite



## KEY PART

NO.	NO.	DESCRIPTION
1	VX4352	RIGHT SIDE COVER SCREW
2	GW323	LEFT SIDE COVER
3	GW036	THUMB BAR PIN
4	VX4255	SPOOL TENSION SHIM
5	VX4252	BALL BEARING (SPOOL SH
6	VX4253	CLIP RING
7	GW044-1	CENTRIFUGAL BRAKESHOE-TAN
7	GW044-2	CENTRIFUGAL BRAKESHOE-RED
8	GW321	SPOOL ASSY.
9	CX4203	LINE GUIDE PAWL SPRING
10	VX4156	WORM SHAFT BUSHING
11	GW069	ANTI-REVERSE SWITCH
12	VX4152	E-CLIP (WORM SHAFT)
13	GW009	THUMB BAR
14	GW022	THUMB BAR SPRING
15	GW050	THUMB BAR SHAFT
17	GW039	RELEASE SLIDER
18	GW084	TRIP CAM
19	GW102	TRIP SPRING
20	GW057	SCREW-SLIDER RETAINER
21	ZX4657	RETAINER CLIP
23	GW107	CTR. SHAFT RET. SCREW
24	GW347	LINE GUIDE CARRIER
25	VX4202	LINE GUIDE PAWL
26	VX4204	LINE GUIDE CARRIER SCREW
27	GW061	STABILIZER BAR
28	GW016	LEVEL WIND GUARD
29	GW072	WORM SHAFT
30	NX068	WORM SHAFT BUSHING-RIGHT
31	GW085	LEVEL WIND GEAR
33	GW301	FRAME ASSY.
34	GW071	A/R SELECTOR SPRING
35	GW093	SCREW-A/R SELECTOR SPRG.
36	GW090	GEAR STACK RETAINER
37	GW363	A/R PAWL ASSY.

## KEY PART

NO.	NO.	DESCRIPTION
38	GW311	PINION GEAR ASSY.
39	GW025	PINION YOKE
40	GW040	YOKE SPRING
41	GW056	CRANK SHAFT BUSHING
42	GW008	CRANK SHAFT
43	GW083	TRIP RATCHET
44	GW091	A/R RATCHET
45	GW045	LOWER DRAG WASHER
46	GW060	LOWER DRAG DISC
47	GW012	DRIVE GEAR
48	GW059	UPPER DRAG DISC
49	GW048	UPPER DRAG WASHER
50	VX4662	SPRING D WASHER
52	GW035	BEARING WASHER
53	GW058	CENTER SHAFT BEARING
54	GW024	RIGHT SIDE COVER
55	GW037	FLIPPIN' ARM
56	GW089	SPRING-FLIPPIN' LEVER
57	GW087	FLIPPIN' LEVER
58	VX4250	DIAL FRICTION RING
59	GW099	FELT WASHER
60	VX4302	SPOOL TENSION KNOB WAS
61	VX4601	SPOOL TENSION KNOB CUS
62	VX4259	SPOOL TENSION KNOB
63	GW069	MYLAR WASHER
64	GW055	DRAG STAR
65	VX4660	HANDLE WASHER
66	GW318	HANDLE ASSY.
67	GX4703	HANDLE NUT LOCK
68	GX4702	HANDLE NUT
69	VX4704	HANDLE NUT LOCK SCREW
70	NX111	RATCHET WASHER
71	WX4510	FLIPP'N LEVER SCREW

[WWW.REELDR.COM](http://WWW.REELDR.COM)

Prices subject to change without notice. Prices do not include postage and handling.

**PLEASE ORDER BY PART NUMBER**

Rev. 11/90

Zebco Division Brunswick Corporation, Box 270, Tulsa, OK 74101 USA 918-838-5581

