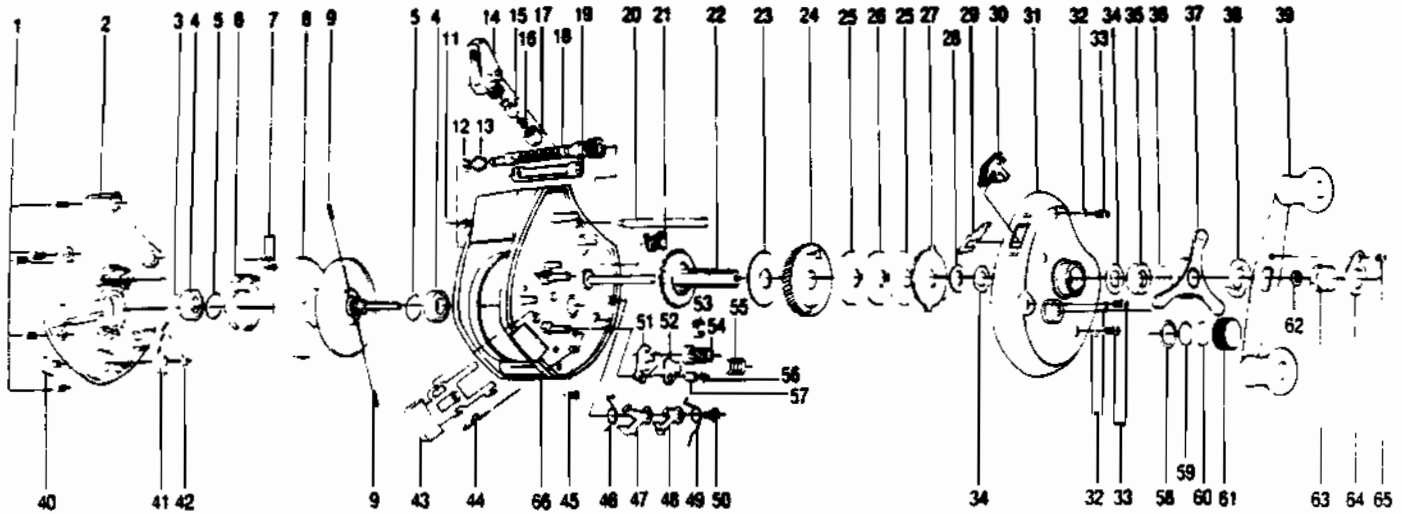


QUANTUM® PRO4

Red dot showing A/R on



KEY PART NO.	DESCRIPTION
1	VX4102
2	CW023
3	VX4255
4	CW017
5	CW080
6	CW110
7	CW107
8	CW321
9	CW044
11	VX4155
12	VX4152
13	VX4151
14	CW347
16	CX4203
16	VX4202
17	VX4204
18	CW372
19	CW016
20	CW061
21	CW363
22	CW308
23	CW060
24	CW012
25	CW089
26	CW085
27	CW048
28	CW035
29	CW071
30	CW064
31	CW024
32	CW069
33	VX4102
34	VX4662
35	CW058

KEY PART NO.	DESCRIPTION
1	SIDE COVER SCREW
2	LEFT SIDE COVER
3	SPOOL TENSION SHRIM
4	BEARING (SPOOL)
5	CLIP RING
6	CLICKER SPRING
7	SCREW CLICKER SPRING
8	SPOOL ASSY.
9	CENTRIFUGAL BRAKE SHOE
11	CARRIER GUIDE SCREW
12	E-CLIP (WORM SHAFT)
13	WORM SHAFT ASSY.
14	LINE GUIDE CARRIER ASSY.
16	LINE GUIDE PAWL SPRING
16	LINE GUIDE PAWL
17	LINE GUIDE CARRIER SCREW
18	WORM SHAFT ASSY.
19	LEVEL WIND GUARD
20	STABILIZER BAR
21	A/R PAWL ASSY.
22	DRIVE SHAFT ASSY.
23	DRAG DISC - LOWER
24	DRIVE GEAR
25	DRAG DISC - MIDDLE
26	DRAG WASHER - MIDDLE
27	DRAG DISC - UPPER
28	WASHER
29	A/R SELECTOR SPRING
30	A/R SELECTOR SWITCH
31	RIGHT SIDE COVER
32	MYLAR WASHER
33	SIDE COVER SCREW
34	SPRING D WASHER
35	CRANK SHAFT BUSHING

KEY PART NO.	DESCRIPTION
36	GW090
37	CW355
38	VX4660
39	CW318
40	CW109
41	CW114
42	ZX4657
43	CW339
44	VX4502
45	CW099
46	VX4541
47	VX4501
48	VX4503
49	VX4543
50	VX4505
51	VX4401
52	VX4411
53	VX4400
54	CW311
55	VX4403
56	VX4243
57	VX4412
58	VX4258
59	VX4302
60	VX4601
61	VX4259
62	VX4657
63	GX4702
64	GX4703
65	VX4704
66	CW301

KEY PART NO.	DESCRIPTION
36	GEAR STACK RETAINER
37	DRAG KNOB ASSY.
38	HANDLE WASHER
39	HANDLE ASSY.
40	CLICKER SWITCH
41	CLICK PAWL
42	RETAINER CLIP
43	SLIDER ASSY.
44	RELEASE SLIDER SPRING
45	SCREW SLIDER RETAINER
46	LATCH-BOTTOM SPRING
47	LATCH-BOTTOM
48	LATCH-TOP
49	LATCH-TOP SPRING
50	LATCH SCREW
51	PINION YOKE
52	SPRING ANCHOR
53	PINION COLLAR
54	PINION ASSY.
55	YOKE SPRING
56	E-CLIP (YOKE)
57	CONICAL SPRING
58	TENSION KNOB RING
59	SPOOL TENSION KNOB WAS
60	SPOOL TENSION KNOB CUS
61	SPOOL TENSION KNOB
62	E-CLIP (CRANK SHAFT)
63	HANDLE NUT
64	HANDLE NUT LOCK
65	HANDLE NUT LOCK SCREW
66	FRAME ASSY.

WWW.REELDR.COM

Prices subject to change without notice. Prices do not include postage and handling.

PLEASE ORDER BY PART NUMBER

Rev. 11/90

Zebco Division Brunswick Corporation, Box 270, Tulsa, OK 74101 USA 918-636-5581

