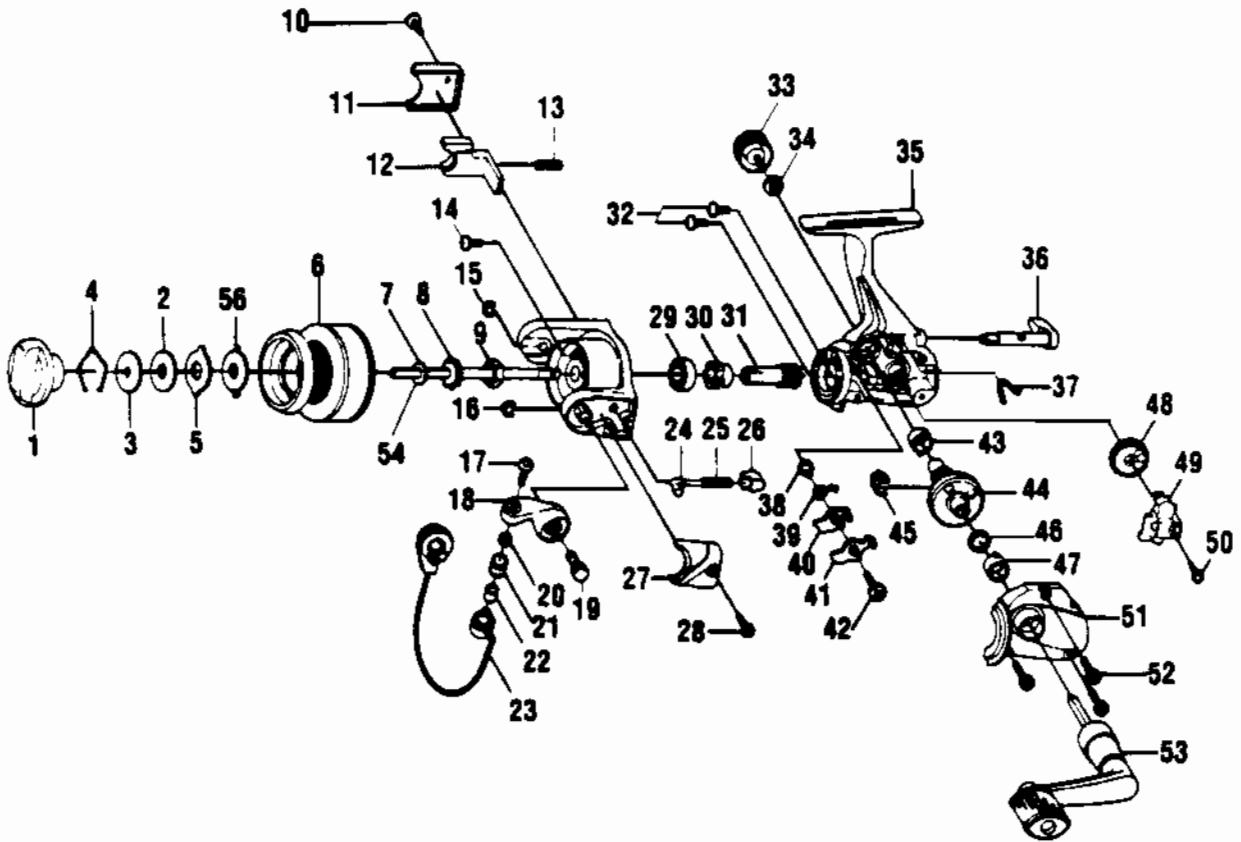


QUANTUM MS00



Key No.	Part No.	Description
1	ZU332-2	Drag Knob Ass'y
2	KQ038	Drag Retainer
3	ZU080	Spool Washer "D"
4	KQ029	Spool Washer "B"
5	KQ045	Spool Washer "A"
6	ZU321-1	Spool Ass'y
7	GU105-6	Spool Washer
8	AQ037	Spool Click Claw
9	GU006	Rotor Nut
10	GU077-7	Kick Lever Cover Screw
11	ZU046-2	Kick Lever Cover
12	ZU019	Kick Lever
13	KQ049	Kick Lever Spring
14	GU077-4	Rotor Nut Lock Screw
15	KQ034	"E"-Clip
16	KQ034	"E"-Clip
17	KQ108	Bail Screw
18	LU007-3	Arm Lever
19	GU051-2	Arm Lever Pin
20	GU105-7	Line Roller Washer
21	MT004	Line Roller
22	MT016-2	Line Roller Bushing
23	ZU347-2	Bail Ass'y
24	KQ031	Spring Shaft
25	KQ049-3	Arm Lever Spring
26	QL020	Spring Holder
27	ZU087-2	Arm Lever Spring Cover
28	ZU077-7	Arm Lever Spring Cover Screw

Key No.	Part No.	Description
29	AQ028	Bail Bearing
30	GU060	Ratchet Gear
31	ZU011	Pinion Gear
32	GU077	Bearing Screw
33	GU073-3	Handle Screw Cap
34	GU103	Handle Cap Washer
35	GU001-8	Body
36	GU090-3	A/R Lever
37	GU089	Stopper Lever Spring
38	GU091	Stopper Bushing
39	GU061	Stopper Spring
40	GU063	Stopper "A"
41	GU074	Stopper "B"
42	GU077-5	Stopper Screw
43	GU027	Body Bushing
44	GU012	Drive Gear
45	GU086	Silent Cam
46	GU105-8	Drive Gear Adj. Washer
47	GU157	Bail Bearing
48	ZU053	Oscillation Gear
49	GU025	Oscillation Slider
50	GU100	Main Shaft Screw
51	GU023-6	Body Cover
52	GU057	Body Cover Screw
53	GU318-11	Handle Ass'y
54	ZU015	Main Shaft
55	ZU009-2	Rotor
56	KQ046	Spring Washer

WWW.REELDR.COM

Prices subject to change without notice. Prices do not include postage and handling.

PLEASE ORDER BY PART NUMBER

Rev. 5/93

Zebco Division Brunswick Corporation, Box 270, Tulsa, OK 74101 USA 918-836-5581

