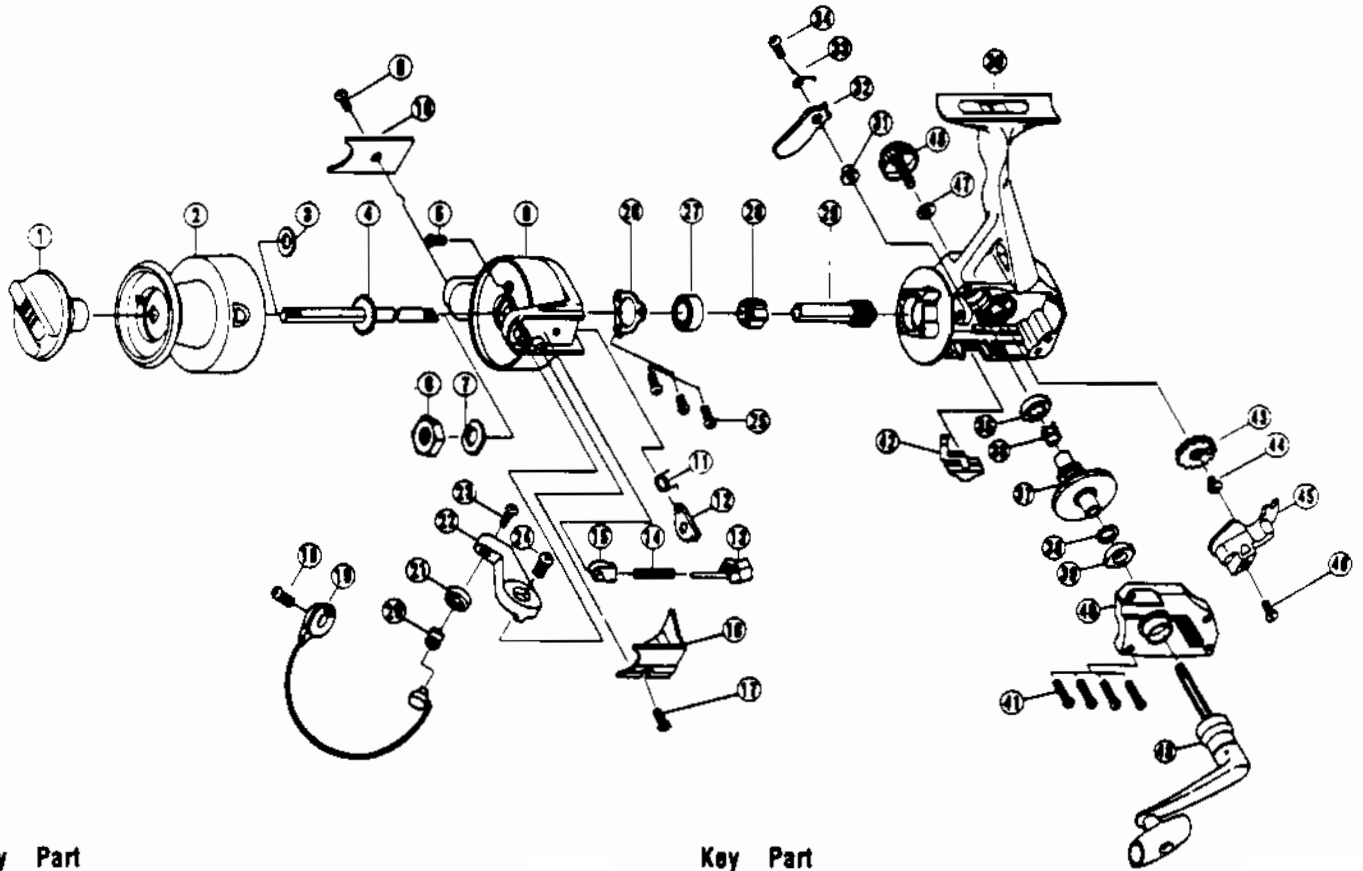


# QUANTUM LS7



Key No.	Part No.	Description	Key No.	Part No.	Description
1	UL332-2	DRAG KNOB ASSEMBLY	27	UL028	BALL BEARING
2	VL321-2	SPOOL ASSEMBLY	28	UL060	RATCHET
3	UL046	SPOOL ADJ. WASHER	29	UL011	PINION GEAR
4	UL315	MAIN SHAFT ASSY.	30	VL001-2	BODY
5	UL094	ROTOR NUT LOCK SCREW	31	UL091	STOPPER BUSHING
6	UL006	ROTOR NUT	32	UL063	STOPPER
7	UL065	ROTOR RETAINER WASHER	33	UL061	STOPPER SPRING
8	VL009-2	ROTOR	34	UL083	STOPPER SCREW
9	UL085	KICK LEVER COVER SCREW	35	UL013	BODY BUSHING
10	UL024	KICK LEVER COVER	36	UL086	SILENT CAM
11	VL049	KICK LEVER SPRING	37	UL012	DRIVE GEAR
12	UL019	KICK LEVER	38	UL026	DRIVE GEAR ADJ. WASHER
13	UL031	SPRING SHAFT	39	UL013	BODY BUSHING
14	UL022	BAIL SPRING	40	VL023-2	BODY COVER
15	UL020	SPRING HOLDER	41	UL057	BODY COVER SCREW
16	VL087	BAIL SPRING COVER	42	UL059	STOPPER LEVER
17	UL085	KICK LEVER COVER SCREW	43	UL053	OSCILLATING GEAR
18	UL051	BAIL HOLDER SCREW	44	UL035	O/S GEAR SCREW
19	VL347	BAIL ASSY.	45	UL081	O/S
20	UL004	LINE ROLLER	46	UL161	O/S SCREW
21	UL017	BAIL COLLAR	47	UL076	HANDLE CAP WASHER
22	UL007	ARM LEVER	48	UL073	HANDLE SCREW CAP
23	UL108	BAIL SCREW	49	VL318	HANDLE ARM
24	UL107	ARM LEVER SCREW			
25	UL080	BEARING PLATE SCREW			
26	UL040	BEARING PLATE			

WWW.REELDR.COM

Prices subject to change without notice. Prices do not include postage and handling.

**PLEASE ORDER BY PART NUMBER**

Rev. 5/93

Zebco Division Brunswick Corporation, Box 270, Tulsa, OK 74101 USA 918-836-5581

