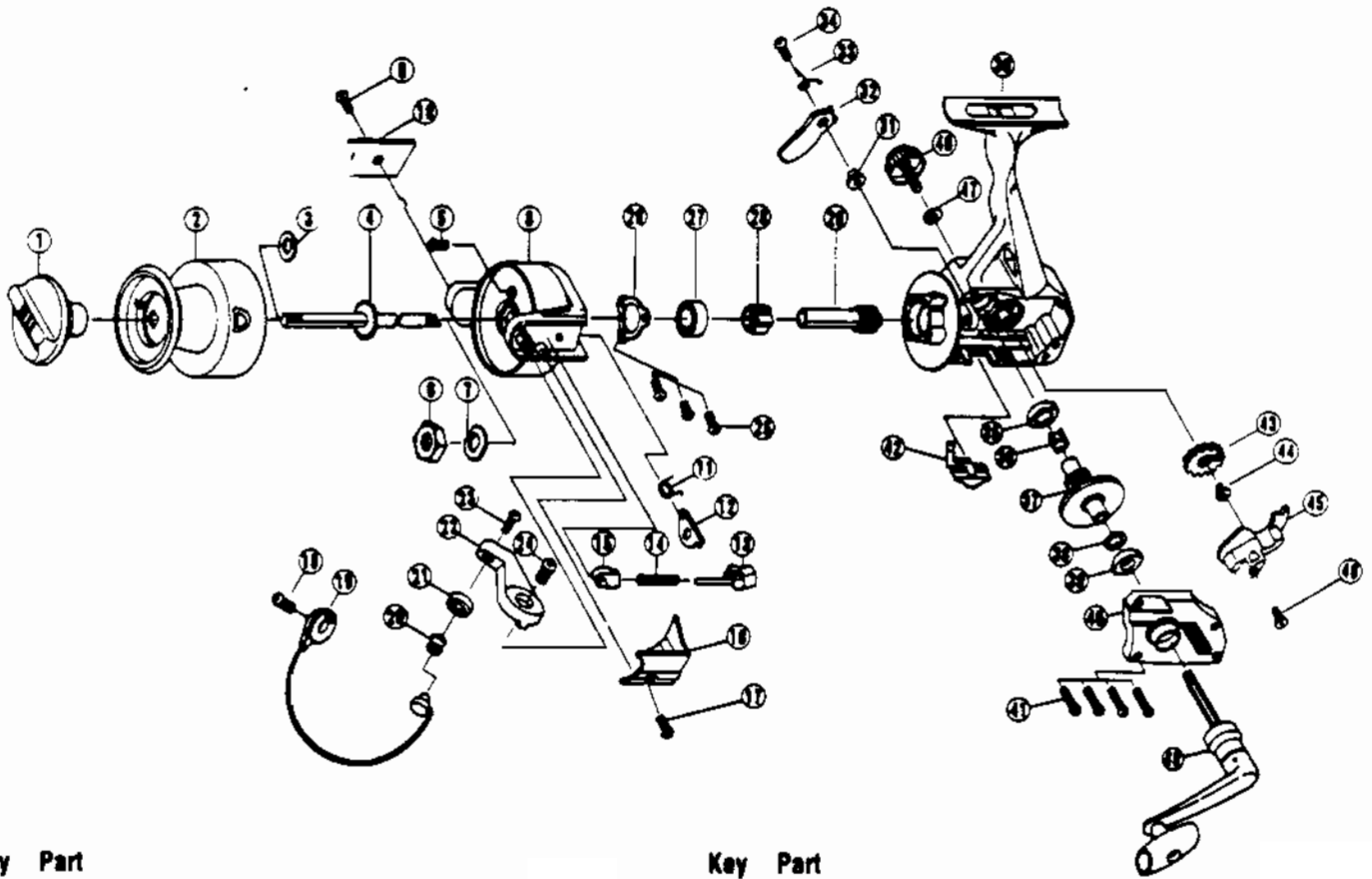


QUANTUM[®] LS6



Key No.	Part No.	Description
1	UL332-2	DRAG KNOB ASSEMBLY
2	UL321-2	SPOOL ASSEMBLY
3	UL046	SPOOL ADJ. WASHER
4	UL315	MAIN SHAFT ASSY.
5	UL094	ROTOR NUT LOCK SCREW
6	UL006	ROTOR NUT
7	UL065	ROTOR RETAINER WASHER
8	UL009-2	ROTOR
9	UL085	KICK LEVER COVER SCREW
10	UL024	KICK LEVER COVER
11	UL049	KICK LEVER SPRING
12	UL019	KICK LEVER
13	UL031	SPRING SHAFT
14	UL022	BAIL SPRING
15	UL020	SPRING HOLDER
16	UL087	BAIL SPRING COVER
17	UL085	KICK LEVER COVER SCREW
18	UL051	BAIL HOLDER SCREW
19	UL347	BAIL ASSY.
20	UL004	LINE ROLLER
21	UL017	BAIL COLLAR
22	UL007	ARM LEVER
23	UL108	BAIL SCREW
24	UL107	ARM LEVER SCREW
25	UL080	BEARING PLATE SCREW
26	UL040	BEARING PLATE

WWW.REELDR.COM

Key No.	Part No.	Description
27	UL028	BALL BEARING
28	UL060	RATCHET
29	UL011	PINION GEAR
30	UL001-2	BODY
31	UL091	STOPPER BUSHING
32	UL063	STOPPER
33	UL061	STOPPER SPRING
34	UL083	STOPPER SCREW
35	UL013	BODY BUSHING
36	UL086	SILENT CAM
37	UL012	DRIVE GEAR
38	UL026	DRIVE GEAR ADJ. WASHER
39	UL013	BODY BUSHING
40	UL023-2	BODY COVER
41	UL057	BODY COVER SCREW
42	UL059	STOPPER LEVER
43	UL053	OSCILLATING GEAR
44	UL035	O/S GEAR SCREW
45	UL081	O/S
46	UL161	O/S SCREW
47	UL076	HANDLE CAP WASHER
48	UL073	HANDLE SCREW CAP
49	UL318	HANDLE ASSY.

Prices subject to change without notice. Prices do not include postage and handling.

PLEASE ORDER BY PART NUMBER

Rev. 5/93

Zebco Division Brunswick Corporation, Box 270, Tulsa, OK 74101 USA 918-836-5581

